



**GenWatch3<sup>®</sup>**  
**GW\_KPI**  
**Software Version 2.12**  
**Module Book**

---

**GenWatch<sub>3</sub>**

600-2.12.0-UU.1  
3/11/20165



## Trademarks

Any brand or product names are trademarks or registered trademarks of their respective holders.

## The Genesis Group Trademark Information

GenWatch3® is a registered trademark of GenCore Candeco, LTD., a subsidiary of Burks GenCore Co., Inc. D.B.A. The Genesis Group and Phil Burks.

## Copyright

Copyright © 2015; Burks GenCore Co., Inc. D.B.A. The Genesis Group and Phil Burks. All rights are reserved. No part of this publication or the associated program may be reproduced, transmitted, transcribed, in whole or in part, in any form or by any means, whether it is mechanical, magnetic, optical, electronic, manual or otherwise, without the prior written consent of Burks GenCore Co., Inc. D.B.A:

The Genesis Group and Phil Burks  
5800 Eagles Nest Blvd  
Tyler, Texas 75703.

Includes technology licensed from Motorola.

## Disclaimer

The GenWatch3 Users Manual is printed in the U.S.A. Burks GenCore Co., Inc. D.B.A. The Genesis Group and Phil Burks believe that the information included in this manual is correct; however, Burks GenCore Co., Inc. D.B.A. The Genesis Group and Phil Burks reserves the right to alter, revise and make periodic changes to the manual and its contents. Burks GenCore Co., Inc. D.B.A. The Genesis Group does not assume responsibility to notify any person of such revisions or changes. While we have taken strides to carefully examine our software and documentation and believe that it is reliable, the Genesis Group and Phil Burks assume no responsibility for the use of the manual, or GenWatch3 software, nor for any patent infringements or other rights of third parties who may use the manual or the GenWatch3 software. Burks GenCore Co., Inc. D.B.A. The Genesis Group and Phil Burks make no representations or warranties with respect to the contents or fitness for a particular purpose beyond the cost of the software paid by the end-user.

The software contains valuable trade secrets and proprietary information. Unauthorized use of the manual or software can result in civil damages and criminal prosecution. As an end user, you agree to abide by and heed these statements.

## License

Title to the media on which the program is recorded and to the documentation in support of the product is transferred to you, but title to the program, and all subsequent copies of the program, despite the form or media in or on license is not a sale of the original or any subsequent copy. You assume responsibility for the selection of the program to achieve your intended results, and for the installation, use, and results obtained from the program.

Refer to the GenWatch3 Manual Overview for your full license. All license information contained on pages 4-7 (Book 600-2.12.0-AA.1) are to be considered as contained herein.

## Support

Customer satisfaction is our number one priority at Genesis. We are here to provide you with the best software possible, and we want to know when you have any questions, concerns or problems with GenWatch3 so that we can make a better product for everyone.

Refer to the *Troubleshooting & Support* section of the GenWatch3 Manual Shell (Book 600-2.12.0-AA.1) for complete support and contact information.

## ***Document History***

<b>Revision</b>	<b>Description</b>	<b>Author</b>
2.10	Initial Release	BUD
2.11	Revisions Before Release	BUD/RS
2.12	Combined values with Historical	JAW
2.12	Added area, bar and stepline graph type options	JAW

# Table of Contents

<i>Trademarks</i> .....	3
<i>The Genesis Group Trademark Information</i> .....	3
<i>Copyright</i> .....	3
<i>Disclaimer</i> .....	3
<i>License</i> .....	3
<i>Support</i> .....	3
DOCUMENT HISTORY .....	4
<b>TABLE OF CONTENTS</b> .....	<b>5</b>
<b>ABOUT THIS MANUAL</b> .....	<b>7</b>
GOALS .....	7
WHO SHOULD READ THIS MANUAL? .....	7
HOW THIS MANUAL IS ORGANIZED .....	7
<b>CHAPTER 1 OVERVIEW</b> .....	<b>9</b>
WHAT IS GW_KPI?.....	9
<i>Terms</i> .....	10
<b>CHAPTER 2 USING GW_KPI</b> .....	<b>11</b>
KEY PERFORMANCE INDICATORS .....	11
<i>Calls</i> .....	12
<i>Busies</i> .....	13
<i>Connections</i> .....	13
<i>Peak Usage</i> .....	13
KPI CHARTS.....	14
<i>Data Point Compression</i> .....	14
<i>Historical Value Data Points</i> .....	14
OPTIONS WINDOW.....	15
<i>Data Source</i> .....	16
<i>Query Options</i> .....	17
Window and Interval.....	18
Date and Time .....	18
Refresh Interval (Minutes) .....	19
<i>Chart Options</i> .....	19
Hide Axis Values .....	19
Chart Type .....	19
<i>KPIs To Display</i> .....	20
RESOURCE TREE VIEW .....	21
CHART GRID VIEW .....	22
<i>Chart Window</i> .....	23
STATUS VIEW .....	24
<i>Data Source</i> .....	24
<i>Query Option</i> .....	24
<i>Legend</i> .....	24



### Goals

This manual describes the function and role of the GW\_KPI module in the GenWatch3 solution and provides instructions on using the GW\_KPI graphical user interface (GUI).

### Who Should Read This Manual?



This manual is written with an expected audience of novice to mid-level trunked radio system users and novice to mid-level PC users.

### How This Manual Is Organized

This manual is organized as follows:

- **Overview:** Describes the GW\_KPI module, the GW\_KPI GUI and the organization of information within the GW\_KPI GUI.
- **Using GW\_KPI:** provides instructions on GW\_KPI and setting up the GUI to satisfy your viewing needs.

This manual contains the following images, used to indicate that a segment of text requires special attention:

-  **Additional Information:** Additional information is used to indicate shortcuts or tips.
-  **Warning:** Warnings are used to indicate possible problem areas, such as a risk of data loss or incorrect/unexpected functionality.





This chapter describes the GW\_KPI module, the GW\_KPI GUI and the organization of information within the GW\_KPI GUI.

This chapter contains the following sections:

- **What is GW\_KPI?:** Defines the function and role of the GW\_KPI module in the GenWatch3 solution.

## **What is GW\_KPI?**

The GW\_KPI module displays real-time WACN, system, RFSS, and site activity on calls, busies, connections and peak usage on a 5-minute interval. The GW\_KPI GUI displays the activities on a Window-Interval or Date-Time configuration.



KPI Module adjusts the periods to display 100 or fewer data points on each graph. If it adjusts the periods, then the aggregated values will be computed based on their type and, as a result, the data points on the graphs might not necessarily display 5 minute intervals.




Intervals *between* data points are curve-fit and may not represent the actual data. There is a note on the chart grid indicating this.



**Figure 1.1 – GW\_KPI GUI**

## Terms

 **KPIs:** Key Performance Indicators.

This Chapter provides instructions on understanding the GW\_KPI and setting up the GUI to satisfy your viewing need.

This chapter contains the following sections:

- **KPIs:** Describes the different key performance indicators used in GW\_KPI.
- **KPI Charts:** Further explains how the KPI charts display data
- **Options Window:** Describes how to configure the GW\_KPI.
- **Resource Tree:** Describes how to use Resource Tree.
- **Chart Grid View:** Describes how to use the chart grid view

### **Key Performance Indicators**

This section describes the different KPIs used in the GW\_KPI module. This information is organized in the following areas:

- **Calls:** Describes the different KPIs under *calls* for the specified period.
- **Busies:** Describes the different KPIs under *busies* for the specified period.
- **Connections:** Describes the different KPIs under *connections* for the specified period.
- **Peak Usage:** Describes the different KPIs under *peak usage* for the specified period.

## Calls

Key performance indicators under *calls* are organized in the areas below. Calls are counted on each site where a channel is granted, regardless of the source site. When aggregated, the **sum** of the data is used for each interval.

- **\*Group Call Count:** The amount of talkgroup calls per interval.
  - **Historical Group Call Count:** Average of all intervals for Group Call Count.
- **Group Call Time:** The amount of milliseconds used by talkgroups.
  - **Historical Group Call Time:** Average of all intervals for Group Call Time.
- **\*Private Call Count:** The amount of private calls per interval.
  - **Historical Private Call Count:** Average of all intervals for Private Call Count.
- **Private Call Time:** The amount of milliseconds used by private calls.
  - **Historical Private Call Time:** Average of all intervals for Private Call Time.
- **\*Data Group Call Count:** The amount of data group calls per interval.
  - **Historical Data Group Call Count:** Average of all intervals for Data Group Call Count.
- **Data Group Call Time:** The amount of milliseconds used by data group calls.
  - **Historical Data Group Call Time:** Average of all intervals for Data Group Call Time.
- **\*Data Private Call Count:** The amount of private data calls per interval.
  - **Historical Data Private Call Count:** Average of all intervals for Data Group Call Count.
- **Data Private Call Time:** The amount of milliseconds used by private data calls.
  - **Historical Data Private Call Time:** Average of all intervals for Data Private Call Time.

\* - These counts include calls that started in this interval as well as calls that were active going into this interval. Calls can be counted across multiple intervals.

## Busies

Key performance indicators under *busies* are organized in the areas below.

When aggregated, the **sum** of the data is used for each interval.

- **\*Busy Count:** The amount of busies per interval.
  - **Busy Historical Count:** Average of all intervals for Busy Count.
- **Busy Time:** The amount of milliseconds the channel was busy.
  - **Busy Historical Time:** Average of all intervals for Busy Time.

\* - This count includes busies that started in this interval as well as busies that were active going into this interval. Busies can be counted across multiple intervals.

## Connections

Key performance indicators under *connections* are organized in the areas below.

When aggregated, the **maximum** of the data is used for each interval.

- **Radio Count:** For each 5 minute interval a sample count of current affiliated radios is taken. For the interval selected the peak 5 minute interval is chosen.
  - **Historical Radio Count:** Average of all intervals for Radio Count.
- **Group Count:** For each 5 minute interval a sample count of current affiliated groups is taken. The affiliated group count is the count of affiliated groups per site, RFSS and System level group counts will be sums of all affiliated groups for sites under that level. For the interval selected the peak 5 minute interval is chosen.
  - **Historical Group Count:** Average of all intervals for Group Count.

When aggregated, the **sum** of the data is used for each interval.

- **Radio Connections:** The amount of radio connections.
  - **Historical Radio Connections** Average of all intervals for Radio Connections.

## Peak Usage

Key performance indicators under *peak usage* are organized in the areas below.

When aggregated, the **maximum** of the data is used for each interval.

- **Peak Channels:** Peak number of channels used.
  - **Historical Peak Channels:** Average of all intervals for Peak Channels.

## KPI Charts

### Data Point Compression

KPI Module adjusts the periods in the KPI charts to display 100 or fewer data points on each graph. If it adjusts the periods, then the aggregated values will be adjusted based on their type and, as a result, the data points on the graphs might not necessarily display 5 minute intervals. To ensure the more readable 5-minute intervals when viewing more than a 6-hour time window, it is best to have the window be increments of 8 hours, 20 minutes. Such as:

- 8 hours 20 minutes = 5 minute data points
- 16 hours, 40 minutes = 10 minute data points
- 25 hours (1 day and 1 hour) = 15 minute data points
- 33 hours, 20 minutes (1 day, 9 hours and 20 minutes) = 20 minute data points
- 41 hours, 40 minutes (1 day, 17 hours and 40 minutes) = 25 minute data points
- 50 hours (2 days and 2 hours) = 30 minute data points

When compression is used on values aggregated by a **sum**, each value is summed to arrive at the compressed data point value.

When compression is used for values aggregated by a **maximum**, a maximum evaluation is performed on each value to determine the compressed data point value.

### Historical Value Data Points

In the KPI charts, historical values are shown as a gray line. Historical values are only shown for data points when archive data exists for the date and time in the data point. For example, if the current date and time is 12/12/2015 13:30 and you choose to view KPIs for a 25 hour range of 12/12/2015 13:00 to 12/13/2015 14:00, you will see historic values for the 12/12/2015 13:15 segment, but not for the 12/13/2015 13:15 segment. This is because the 12/13/2015 13:15 segment is in the future and does not have corresponding archive data.

This also applies to data points consisting of more than one compressed data point (explained above). KPI will only compress the data points that have corresponding archive data.

Regardless of selected time range, historical values show the historical average for all known intervals.

## Options Window

This section describes the different configurations settings use in GW\_KPI and the GUI that allow users for modifying the configurations. A user can load up the Options Window GUI by clicking on *Options Window* in the View menu. The Options Window section is organized in the following areas:

- **Data Source:** Describes how to setup the GW\_KPI data source.
- **Query Options:** Describes how to set up querying the GW\_KPI data source for fetching data.
- **Chart Options:** Describes the function of each of the chart options.
- **KPIs To Display:** Describes how to setup the different key performance indicators to display.

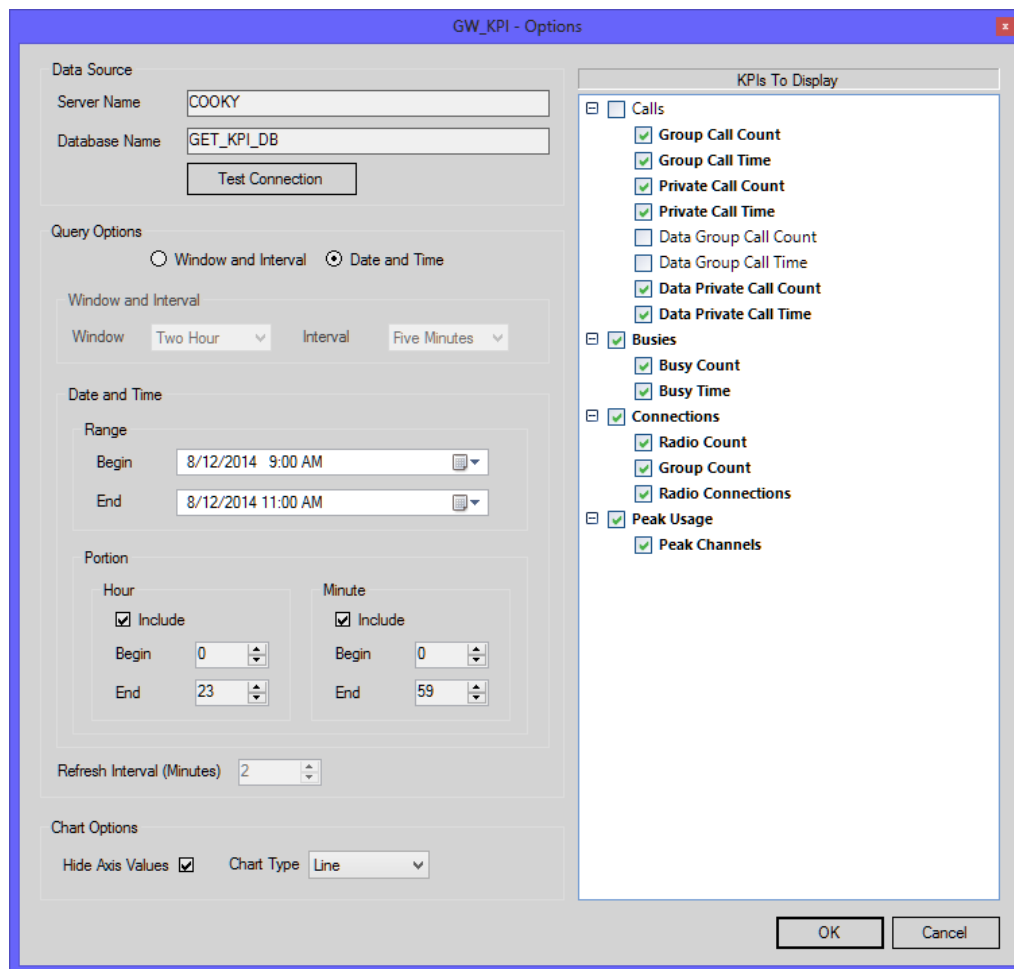
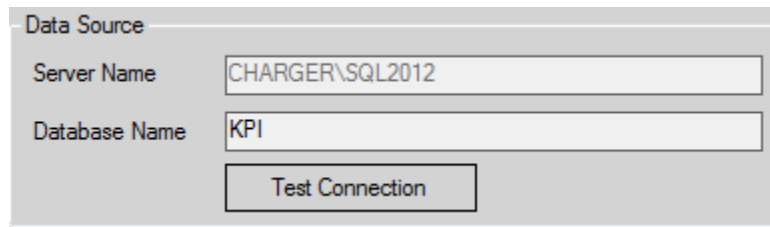


Figure 2.1 – KPI Options Window

## Data Source

The data source where GW\_KPI fetches data from. The following are the connection properties for the data source.

- **Server Name:** The SQL Server instance for GW\_KPI.
- **Database Name:** The database instance name for GW\_KPI.



The image shows a dialog box titled "Data Source". It contains two text input fields. The first field is labeled "Server Name" and contains the text "CHARGER\SQL2012". The second field is labeled "Database Name" and contains the text "KPI". Below these fields is a button labeled "Test Connection".

**Figure 2.2** – Data Source

Notes about Data Source:

- Click on the Test Connection button when enabled to test the connection to the GW\_KPI data source. If the connection is successful then a “Successful” message will be displayed otherwise the appropriate error message will be displayed.



## Query Options

Query Options determines how and when data is fetched from the GW\_KPI data source. Fetching data can be configured by using *Window and Interval* or *Date and Time*. The default configuration is *Window and Interval*. While one configuration is set the other cannot be modified. Query Options is organized in the following areas:

- **Window and Interval:** Describes using *window* and *interval* configuration to fetch data from the GW\_KPI data source.
- **Date and Time:** Describes using *Date and Time* configuration to fetch data from the GW\_KPI data source.
- **Refresh Interval (Minutes):** Describes the interval used in fetching data.

The screenshot shows the 'Query Options' configuration window. At the top, there are two radio buttons: 'Window and Interval' (unselected) and 'Date and Time' (selected). Below this, the 'Window and Interval' section is visible, showing 'Window' set to 'Two Hour' and 'Interval' set to 'Five Minutes'. The 'Date and Time' section is also visible, showing a 'Range' with 'Begin' at '8/12/2014 9:00 AM' and 'End' at '8/12/2014 11:00 AM'. Below the range, there are two columns for 'Portion': 'Hour' and 'Minute'. Both columns have an 'Include' checkbox checked. The 'Hour' column has 'Begin' at 0 and 'End' at 23. The 'Minute' column has 'Begin' at 0 and 'End' at 59. At the bottom, there is a 'Refresh Interval (Minutes)' field set to 2.

**Figure 2.3** – Query Options

## Window and Interval

This configuration uses a window to determine what data is queried from the data source in intervals of Five Minutes (5-Minutes). The window determines the time frame in the past to account for when the GW\_KPI data source is fetching data. For example, if the window is set to Two Hour, then query results would be based on 2 hours before the time that the data source is queried.

Valid *Window* values:

- One Hour
- Two Hour (default)
- Six Hour
- Twelve Hour
- One Day
- One Week

## Date and Time

This Configuration uses a date and time range and a date and time portion method to determine what data is queried from the GW\_KPI data source. *Range* determines the time frame and *Portion* determines the individual date or time portion to include in the query. A user can check/uncheck the *Include* radio button to determine whether that *portion* gets included or not in the query.

### Range

- *End* must be greater than or equal to *Begin*

### Portion

- **Hour**
  - Included by default
  - Valid values: 0 to 23
  - Default
    - *Begin* (0)
    - *End* (23)
  - *End* must be greater than or equal to *Begin*
- **Minute**
  - Included by default
  - Valid values: 0 to 59
  - Default
    - *Begin* (0)
    - *End* (59)
  - *End* must be greater than or equal to *Begin*

### **Refresh Interval (Minutes)**

The *Refresh Interval* determines the minutes GW\_KPI takes in fetching data from the data source. The valid range of values for *Refresh Interval* is from 2 to 5 minutes and by default it is set to 2 minutes.



If the query option is set to Date and Time, the Refresh Interval is disabled because there is no new data to continually retrieve.

### **Chart Options**

This section contains features that effect how the charts are displayed. These features include:

#### **Hide Axis Values**

To maximize each chart's display area, you can choose to remove the vertical axis values from the charts. When this feature is enabled, the axis values are still visible in the zoom window when you double-click on a chart.

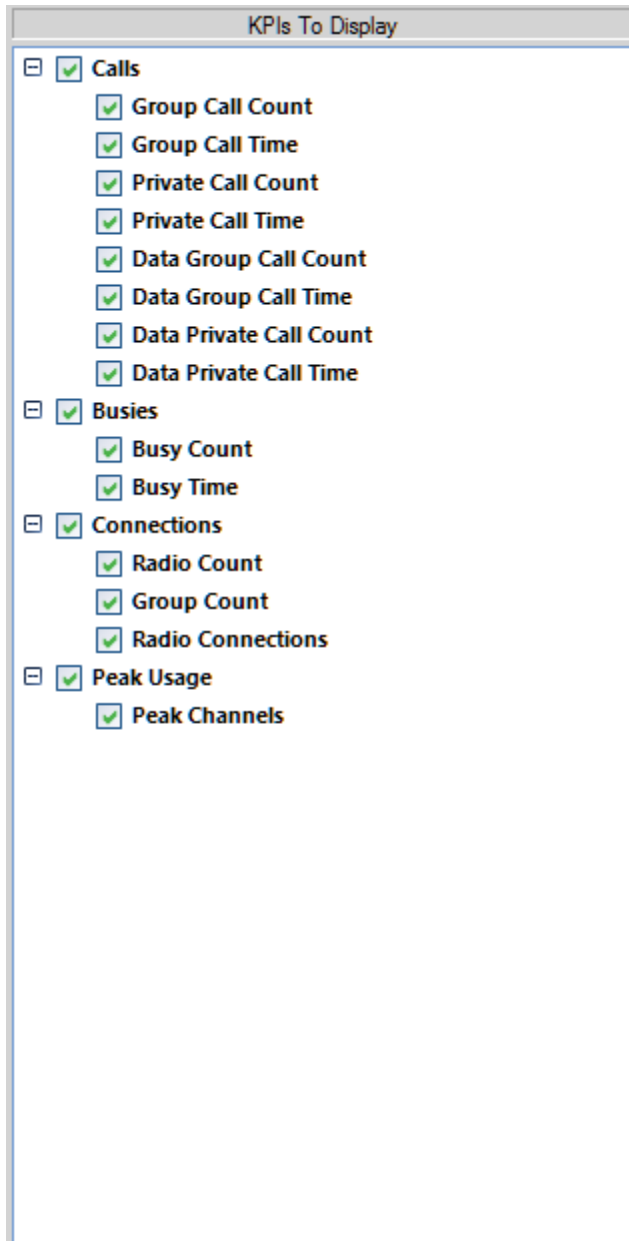
#### **Chart Type**

The following chart options are available:

- Area
- Bar
- Line
- Stepline

## KPIs To Display

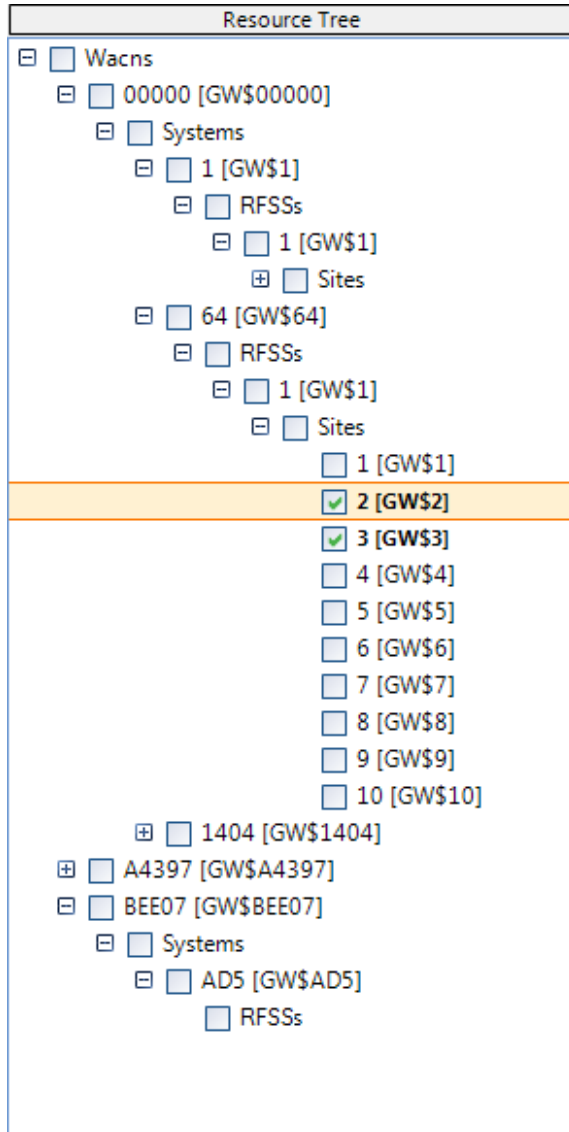
This determines which KPIs to enable for display in the GW\_KPI. KPIs marked as checked and bolded are the ones enabled for display. A user can simply check/uncheck a parent key performance indicator node to enable/disable correspondingly all the KPIs under it.



**Figure 2.4** – KPIs To Display

## Resource Tree View

The Resource Tree displays all GW\_KPI resources from a WACN to a Site level. Each node in the Resource Tree View contains a check box and checking/unchecking it determines whether KPIs are shown/hidden correspondingly for that particular resource in the chart grid view. A user can hide/show the Resource Tree View by selecting *Hide Resource Tree/Show Resource Tree* from the View menu.



**Figure 2.5** – Resource Tree View



To ensure that GW\_KPI's performance is acceptable, the GUI limits the number of checked resources. This limit is set in your license; to request an increase, contact support.

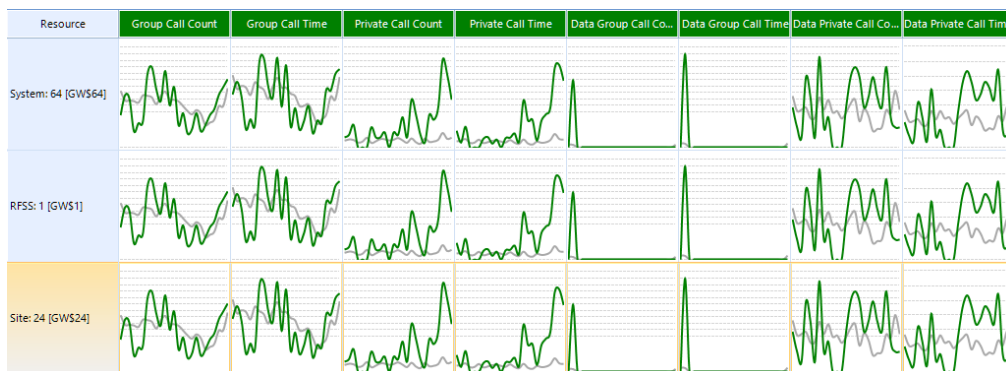
## Chart Grid View

The Chart Grid View displays the Resource alias and KPIs (charts) for each enable resource on the *Resource Tree View* based on the user's configuration setting in the *Options Window*. Each column on the Chart Grid View (except **Resource**) corresponds to the individual key performance indicator selected in the *KPIs To Display* in the user's Options Window. Charts in the Grid get refreshed base on the Refresh Interval settings. Depending on the number of enabled resources it might take a bit of time to refresh accordingly.

Data last refreshed: 9:05:33 AM | Charts last refreshed: 9:05:59 AM

**Figure 2.6** – Refresh display

The **Refresh display** at the top of the screen shows when the data was fetched from the database / when it was displayed. The Chart Grid View can be renewed with the latest data by clicking the **Refresh Charts** button.

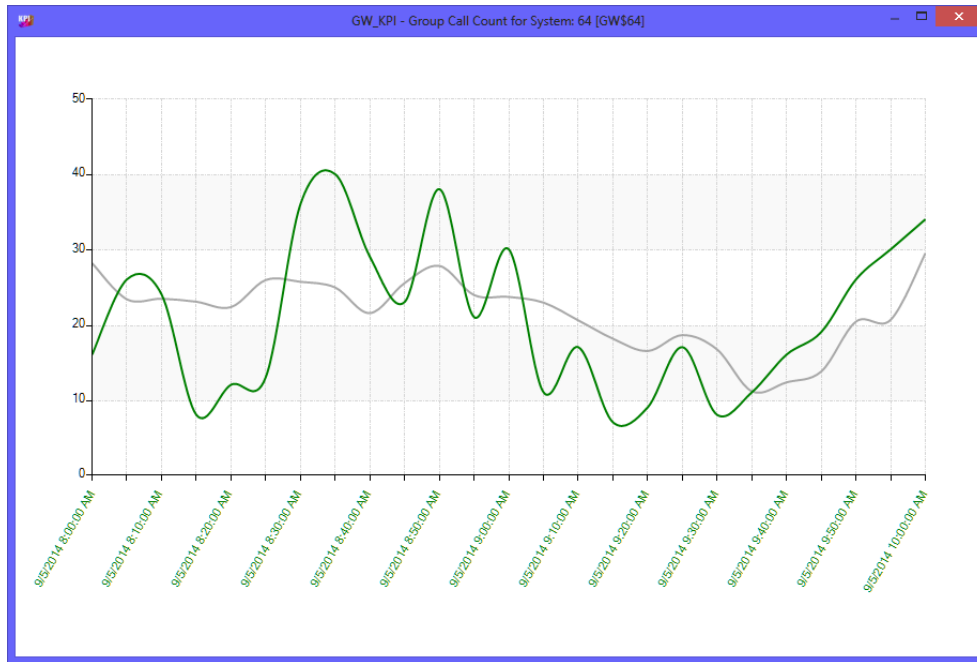


**Figure 2.7** – Chart Grid View

- **Column Reordering**
  - Columns in the Chart Grid View can be reordered by clicking and dragging on the column header.
- **Column Resizing:**
  - Columns in the Chart Grid View can be resized by dragging on the column handle.
- **Row Resizing:**
  - Rows in the Chart Grid View can be resized by dragging on the row handle.

## Chart Window

Double clicking on a chart displays the chart window. The chart window displays the corresponding chart in a zoomed form to allow for easy readability.

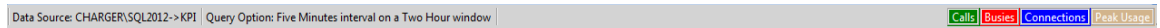


**Figure 2.8** – Chart Window

## Status View

The *Status View* displays current GW\_KPI user configuration. It is organized in the following areas:

- **Data Source:** Displays the current GW\_KPI data source (Data Source: Server Name->Database Name).
- **Query Option:** Displays the currently selected query option.
- **Legend:** Displays the default colors for the different key performance indicators use as column header back color in the *Chart Grid View*.



**Figure 2.9** – Status View

### Data Source

The *Data Source* label in the status view displays the current GW\_KPI data source. Red fore color indicates that the GW\_KPI data source is not being accessible due to an error and it will display the following message below (double clicking on the label will load a message box displaying the entire error message):

**Data Source: Server Name->Database Name (Double click to display error).**

### Query Option

The *Query Option* label in the status view displays the currently selected Query Option (Query Option: Five Minutes interval on a Two Hour window).

### Legend

The *Legend* displays the default colors for the different key performance indicators (Calls, Busies, Connections and Peak Usage). The column header background color and chart color on the *Chart Grid View* corresponds to the color on Legend. Legend colors cannot currently be changed and the following list defines the ones being used in the GW\_KPI.

- **Green** = Calls
- **Red** = Busies
- **Blue** = Connections
- **Tan** = Peak Usage