



**GenWatch3<sup>®</sup>**  
**GW\_AMNP Quickstart Guide**  
**Software Version 2.12**

---

**GenWatch<sub>3</sub>**

600-2.12.0-OO.1  
1/8/2016



## Trademarks

Any brand or product names are trademarks or registered trademarks of their respective holders.

## The Genesis Group Trademark Information

GenWatch3® is a registered trademark of GenCore Candeco, LTD., a subsidiary of Burks GenCore Co., Inc. D.B.A. The Genesis Group and Phil Burks.

## Copyright

Copyright © 2016; Burks GenCore Co., Inc. D.B.A. The Genesis Group and Phil Burks. All rights are reserved. No part of this publication or the associated program may be reproduced, transmitted, transcribed, in whole or in part, in any form or by any means, whether it is mechanical, magnetic, optical, electronic, manual or otherwise, without the prior written consent of Burks GenCore Co., Inc. D.B.A:

The Genesis Group and Phil Burks  
5800 Eagles Nest Blvd  
Tyler, Texas 75703.

Includes technology licensed from Motorola.

## Disclaimer

The GW\_AMNP Quickstart Guide is printed in the U.S.A. Burks GenCore Co., Inc. D.B.A. The Genesis Group and Phil Burks believe that the information included in this manual is correct; however, Burks GenCore Co., Inc. D.B.A. The Genesis Group and Phil Burks reserves the right to alter, revise and make periodic changes to the manual and its contents. Burks GenCore Co., Inc. D.B.A. The Genesis Group does not assume responsibility to notify any person of such revisions or changes. While we have taken strides to carefully examine our software and documentation and believe that it is reliable, the Genesis Group and Phil Burks assume no responsibility for the use of the manual, or GenWatch3 software, nor for any patent infringements or other rights of third parties who may use the manual or the GenWatch3 software. Burks GenCore Co., Inc. D.B.A. The Genesis Group and Phil Burks make no representations or warranties with respect to the contents or fitness for a particular purpose beyond the cost of the software paid by the end-user.

The software contains valuable trade secrets and proprietary information. Unauthorized use of the manual or software can result in civil damages and criminal prosecution. As an end user, you agree to abide by and heed these statements.

## License

Title to the media on which the program is recorded and to the documentation in support of the product is transferred to you, but title to the program, and all subsequent copies of the program, despite the form or media in or on license is not a sale of the original or any subsequent copy. You assume responsibility for the selection of the program to achieve your intended results, and for the installation, use, and results obtained from the program.

Refer to the GenWatch3 Manual Overview for your full license. All license information contained on pages 4-7 (Book 600-2.12.0-AA.1) are to be considered as contained herein.

## Support

Customer satisfaction is our number one priority at Genesis. We are here to provide you with the best software possible, and we want to know when you have any questions, concerns or problems with GenWatch3 so that we can make it a better product for everyone.

Refer to the *Troubleshooting & Support* section of the GenWatch3 Manual Shell (Book 600-2.12.0-AA.1) for complete support and contact information.

## **Document History**

<b>Revision</b>	<b>Description</b>	<b>Author</b>
2.0.2	Initial Release	KIH
2.0.3	Release Revisions	KIH
2.0.4	Release Revisions	KIH
2.0.5	Release Revisions	TDW
2.0.5.26	Added Channel Import Notice	KIH
2.0.6	Updated screenshots for F1 Help	REB
2.0.6	Updated Option Screen Capture	KIH
2.0.6.6	Release Revisions	TDW
2.3	Release Revisions	REB
2.4	Revisions Before Release	WRK
2.5	Revisions Before Release	CWF
2.6	Revisions Before Release	CWF
2.7	Revisions Before Release	CWF
2.8	Revisions Before Release	CWF
2.9	Revisions Before Release	CWF
2.11	Conversion to docx	BCY
2.12	Revisions Before Release	JAW

# Table of Contents

---

<i>Trademarks</i> .....	3
<i>The Genesis Group Trademark Information</i> .....	3
<i>Copyright</i> .....	3
<i>Disclaimer</i> .....	3
<i>License</i> .....	3
<i>Support</i> .....	3
DOCUMENT HISTORY .....	4
<b>TABLE OF CONTENTS</b> .....	<b>5</b>
<b>ABOUT THIS MANUAL</b> .....	<b>7</b>
GOALS .....	7
WHO SHOULD READ THIS MANUAL? .....	7
HOW THIS MANUAL IS ORGANIZED .....	7
<b>CHAPTER 1 CONFIGURING THE GW_AMNP MODULE</b> .....	<b>9</b>
WHAT IS GW_AMNP?.....	9
LOADING THE GW_AMNP EDIT SCREEN .....	9
ADDING AMNP CONNECTIONS .....	10
<i>Connection Settings</i> .....	10



### Goals

This document guides you through the GenWatch3 AMNP connection setup process. After you complete the steps in this document, your GenWatch3 installation will be configured to receive data from your AMNP Network.

### Who Should Read This Manual?



This document is written for an audience with an understanding of computer and network administration. Specifically, it is for those who have purchased GenWatch3 with an AMNP input source.

### How This Manual Is Organized

This manual is organized as follows:

- **Configuring the GW\_AMNP Module:** Instructions on setting up a connection to an AMNP Network.

This manual contains the following images, used to indicate that a segment of text requires special attention:

-  **Additional Information:** Additional information is used to indicate shortcuts or tips.
-  **Warning:** Warnings are used to indicate possible problem areas, such as a risk of data loss, or incorrect/unexpected functionality.





## What is GW\_AMNP?

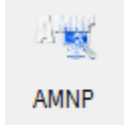
The GW\_AMNP Graphical User Interface (GUI) shows the current configuration of each of your GW\_AMNP module connection(s).

The number of connections you are allowed to create within the GW\_AMNP module is limited by your license. Please contact GenWatch3 Support with questions regarding licensing for additional connections.

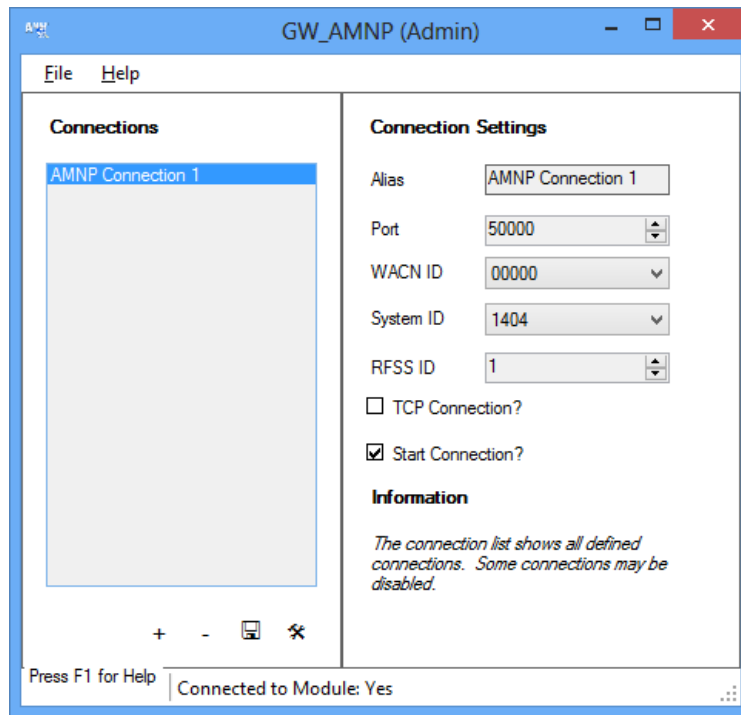
## Loading the GW\_AMNP Edit Screen

Launch the GUI for the GW\_AMNP module by following the steps below:

1. Launch the GW\_Launchpad (see *GenWatch3 Core book*).
2. Locate the GW\_AMNP icon in the *Modules* list. The GW\_AMNP module uses this icon:



3. Double-click the GW\_AMNP icon: This will load the GW\_AMNP GUI.



**Figure 1.1** – GW\_AMNP GUI

## Adding AMNP Connections

When the GenWatch3 application is installed, no connections exist. You must create a connection to receive AMNP data. To create a new connection, follow the steps below:

1. Click the **Add** button towards the bottom left of the GUI: This will create a new connection, named 'New Connection 1' in the **Connections** list with default properties.
2. Change the properties in the **Connection Settings**.
3. Click the **Update** button to store the new connection.

## Connection Settings

In this section, enter the following settings for the AMNP Network.

- **Alias:** The name that the connection will be known as.
- **Port:** Enter the port number on which to listen for packets on the AMNP Network. Packets may be received from multiple sources.
- **Wacn ID:** Select the WACN ID assigned to this connection. The selection options are populated from the license file.
- **System ID:** Select the System ID assigned to this connection. The selection options are populated from the license file.
- **RFSS ID:** Enter the RFSS ID for this connection.
- **TCP Connection:** Determines if the connection should use TCP instead of UDP.
- **Start Connection:** If checked, the GW\_AMNP module will start this connection when the module is started. The GW\_AMNP module is started whenever Alerts is running. If you want to retain the settings for a connection, but do not want to receive packets from the connection, uncheck this option. In most cases, this option should be checked.



**You are not done yet!** Remember to import your channels into the GW\_Alias module. For more information, see Chapter 11 of the *GW\_Alias book*. This step is required for reporting.