

GENESIS ENHANCEMENT FOR OUTDOOR LOCATOR SOLUTION/MUPS (UNS)



MONITOR, MANAGE, ARCHIVE AND REPORT ON THE MOTOROLA ASTRO® 25 LOCATION TRACKING SOLUTION

The Genesis OLS enhancement extends the functionality of the Motorola ASTRO® 25 Outdoor Locator Solution and Motorola Universal Processing Server (MUPS) in several ways. The OLS/MUPS performs a specific task with rock-solid reliability, but its reporting capacity only covers a very brief period of time.

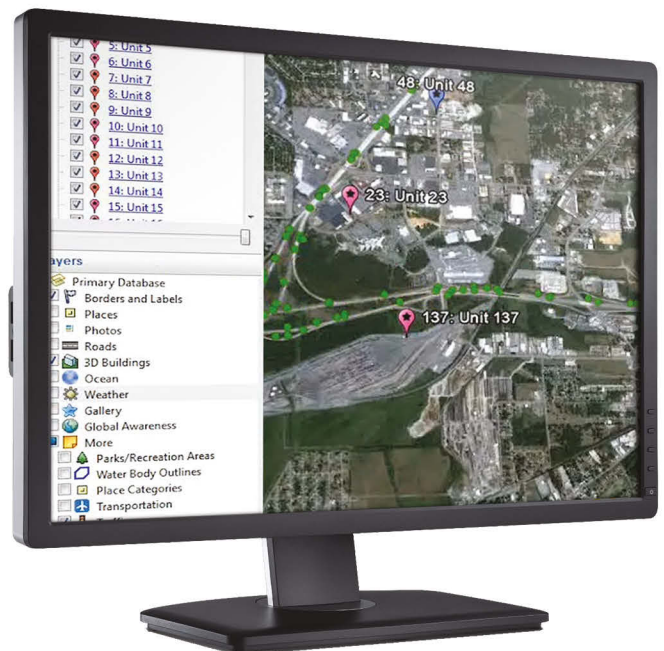
In short, the Genesis OLS/MUPS enhancement connects to the MUPS as a fully qualified client and can integrate every bidirectional MUPS report, request, and answer (i.e. message) with the ASTRO 25 radio and data traffic activity for long-term forensic reporting (1-7 years of storage is typical). The Genesis enhancement is also "Multi-MUPS" capable, with a licensable set of concurrent, independent MUPS client connections, all flowing through GenWatch3 with the same LRRP-based protocol available when connected directly to the MUPS itself. Development of CAD systems to the Motorola ASTRO 25 Outdoor Location Solution API will automatically render them compatible with the Genesis enhancement.



EGLView maximizes the sophisticated mapping power of Google™ Earth to provide a powerful yet cost-effective visual enhancement to the Genesis OLS/MUPS solution. Graphical representations of subscriber units appear according to their geophysical locations on the map. More than simple eye candy, EGLView provides valuable at-a-glance information to control rooms and network operations centers.

INSTANT UNIT STATUS VIEWS

EGLView adds another dynamic layer to Google Earth, enhancing its existing display of live atmospheric conditions, such as rainfall, hail and lightning strikes, weather forecasts, as well as traffic and other information...all from one user interface. Clicking on an EGLView icon provides more detailed information on a unit.



Visit www.genesisworld.com/EGLView

ASTRO 25 is a registered trademark of Motorola Trademark Holdings, LLC
GenWatch3 is a registered trademark of GenCore Candeco, Ltd.



OLS/MUPS ENHANCEMENT KEY FEATURES

Archive GPS / OLS Data

The Genesis OLS/MUPS Enhancement receives LRRP data from the MUPS server and passes every packet back to the Genesis databases for storage alongside the radio activity for as long as desired (typically 1-7 years). The following data points are decoded and stored:

- ▶ GPS Latitude
- ▶ GPS Longitude
- ▶ GPS Speed
- ▶ GPS Direction
- ▶ GPS Radius
- ▶ GPS Altitude
- ▶ GPS Timestamp
- ▶ GPS Telemetry Sensor Unique Identifier
- ▶ GPS Telemetry Sensor Name
- ▶ GPS Telemetry Sensor Alias
- ▶ GPS Telemetry Sensor Output

Client Interface

GenWatch3® has a built-in client interface to process individual or batch OLS commands. It supports the following commands:

- ▶ GPS Immediate Location Request
- ▶ GPS Triggered Location Change Request (cadence and distance)
- ▶ GPS Triggered Location Stop Request
- ▶ GPS Digital Output Change Request (output name and value) – for instance, the siren can be sounded for a minute or the doors unlocked, etc.
- ▶ Database Snapshot includes GPS telemetry, sensor, and vehicle data

Notification Triggers

The powerful GenWatch3 Trigger Module immediately pushes notifications on critical location or telemetry changes to the people who need them most. The GenWatch3 Trigger Module can send notification by Audio/Visual GUI notifications, External Alarm Relay interface, SNMP, Email or SMS (through carrier SMTP/SMS gateway). Events include things like:

- ▶ Ignition On/Off
- ▶ Siren On/Off
- ▶ Door Open/Closed
- ▶ Door Lock On/Off
- ▶ Alarm Triggered Active/Inactive
- ▶ Alarm Armed Active/Inactive
- ▶ Emergency Active/Inactive
- ▶ Air Conditioning On/Off
- ▶ Unit Present
- ▶ Any other sensor & output configured in the Cellocator Network

Reports

The solution includes the following OLS/MUPS reports:

- ▶ RCM Report in GenWatch3 – Shows all commands issued from the GenWatch3 RCM Module
- ▶ GenWatch3-ATIA Reports – Any of the GenWatch3-ATIA database reports containing Radio Alias information can be modified to include the extended OLS Location information. For example, the "Radio Activity by ID" report shows all OLS commands that were sent, who they went to, and the results of the command.

CONTACT GENESIS

+1 903-787-7400 International
+1 877-548-0465 Toll Free US & Canada
moreinfo@genesishworld.com
www.genesishworld.com/PMI



GenWatch3 is a registered trademark of GenCore Candeo, Ltd.