



**GenWatch3<sup>®</sup>**  
**GW\_SysVista**  
**Software Version 2.12**  
**Module Book**

---

# **GenWatch<sub>3</sub>**

600-2.12.0-O.1  
1/8/2016



## Trademarks

Any brand or product names are trademarks or registered trademarks of their respective holders.

## The Genesis Group Trademark Information

GenWatch3® is a registered trademark of GenCore Candeo, LTD., a subsidiary of Burks GenCore Co., Inc. D.B.A. The Genesis Group and Phil Burks.

## Copyright

Copyright © 2016; Burks GenCore Co., Inc. D.B.A. The Genesis Group and Phil Burks. All rights are reserved. No part of this publication or the associated program may be reproduced, transmitted, transcribed, in whole or in part, in any form or by any means, whether it is mechanical, magnetic, optical, electronic, manual or otherwise, without the prior written consent of Burks GenCore Co., Inc. D.B.A:

The Genesis Group and Phil Burks  
5800 Eagles Nest Blvd  
Tyler, Texas 75703.

Includes technology licensed from Motorola.

## Disclaimer

The GenWatch3 User's Manual is printed in the U.S.A. Burks GenCore Co., Inc. D.B.A. The Genesis Group and Phil Burks believe that the information included in this manual is correct; however, Burks GenCore Co., Inc. D.B.A. The Genesis Group and Phil Burks reserves the right to alter, revise and make periodic changes to the manual and its contents. Burks GenCore Co., Inc. D.B.A. The Genesis Group does not assume responsibility to notify any person of such revisions or changes. While we have taken strides to carefully examine our software and documentation and believe that it is reliable, the Genesis Group and Phil Burks assume no responsibility for the use of the manual, or GenWatch3 software, nor for any patent infringements or other rights of third parties who may use the manual or the GenWatch3 software. Burks GenCore Co., Inc. D.B.A. The Genesis Group and Phil Burks make no representations or warranties with respect to the contents or fitness for a particular purpose beyond the cost of the software paid by the end-user.

The software contains valuable trade secrets and proprietary information. Unauthorized use of the manual or software can result in civil damages and criminal prosecution. As an end user, you agree to abide by and heed these statements.

## License

Title to the media on which the program is recorded and to the documentation in support of the product is transferred to you, but title to the program, and all subsequent copies of the program, despite the form or media in or on license is not a sale of the original or any subsequent copy. You assume responsibility for the selection of the program to achieve your intended results, and for the installation, use, and results obtained from the program.

Refer to the GenWatch3 Manual Overview for your full license. All license information contained on pages 4-7 (Book 600-2.12.0-AA.1) are to be considered as contained herein.

## Support

Customer satisfaction is our number one priority at Genesis. We are here to provide you with the best software possible and we want to know when you have any questions, concerns or problems with GenWatch3 so that we can make it better product for everyone.

Refer to the *Troubleshooting & Support* section of the GenWatch3 Manual Shell (Book 600-2.12.0-AA.1) for complete support and contact information.

## Document History

Revision	Description	Author
2.0.2	Initial Release	JAW
2.0.3	Revision before release	JAW
2.0.4	Fixed grammatical error on page 14	JAW
2.0.4	Added appendix showing processed packet types	JAW
2.0.5	Revised to include the view option (Multi-view)	JAW
2.0.5	Revision before release	TDW
2.0.5	Updated Multi-view screenshots	KIH
2.0.6	Updated screenshots	CLB
2.0.6.6	Revision before release	TDW
2.0.6.10	Updated System Usage section to describe slots	JAW
2.2.0	Revisions before release	KIH
2.3	Release Revisions	REB
2.4	Revision Before Release	CWF
2.5	Revision Before Release	CWF
2.6	Revisions Before Release	CWF
2.8	Revisions Before Release	WRK
2.9	Revisions Before Release	REB
2.10	Revisions Before Release	JAW
2.11	Conversion to docx	BCY
2.12	Revisions Before Release	JAW

# Table of Contents

<i>Trademarks</i> .....	3
<i>The Genesis Group Trademark Information</i> .....	3
<i>Copyright</i> .....	3
<i>Disclaimer</i> .....	3
<i>License</i> .....	3
<i>Support</i> .....	3
DOCUMENT HISTORY .....	4
<b>TABLE OF CONTENTS</b> .....	<b>5</b>
<b>ABOUT THIS MANUAL</b> .....	<b>7</b>
GOALS .....	7
WHO SHOULD READ THIS MANUAL? .....	7
HOW THIS MANUAL IS ORGANIZED .....	7
<b>CHAPTER 1 OVERVIEW</b> .....	<b>9</b>
GW_SYSVISTA TERMS .....	9
WHAT IS GW_SYSVISTA? .....	10
RESOURCE OPTIONS .....	11
CONNECTION OPTIONS .....	12
IGNORE CONSOLES .....	13
IGNORE CONVENTIONAL SITES .....	13
STATISTICS .....	14
<i>Usage Overview</i> .....	15
INTERVAL OPTIONS .....	16
GW_SYSVISTA ALERTS .....	17
VIEW OPTIONS .....	18
<i>Dashboard</i> .....	18
<i>Multi-view</i> .....	18
Multi-View Banner .....	19
Adding a Dial .....	20
Updating a Dial .....	21
Removing a Dial .....	21
Toggling a Dial to Number Only view .....	21
<b>CHAPTER 2 KEY PERFORMANCE INDICATORS (KPIs)</b> .....	<b>23</b>
WHAT ARE KPIs? .....	23
KPI STORAGE AND AVAILABILITY .....	23
KPI TABLE DEFINITIONS .....	24
<i>KpiSysVistaSystems</i> .....	24
<i>KpiSysVistaZones</i> .....	25
<i>KpiSysVistaSites</i> .....	26
KPI VIEW DEFINITIONS .....	28
<i>Kpi.SysVista.Systems</i> .....	28
<i>Kpi.SysVista.Zones</i> .....	29
<i>Kpi.SysVista.Sites</i> .....	30
KPI OPTIONS .....	31
Option Definitions.....	31
Setting KPI Options .....	32
<b>APPENDIX A</b> .....	<b>33</b>

RADIO ACTIVITIES.....33  
RADIO DISCONNECTED ACTIVITY .....33

### Goals

This manual describes the role and function of the GW\_SysVista module in the GenWatch3 solution.

### Who Should Read This Manual?



This manual is written for the intended audience of novice to mid-level trunked radio system users and novice to mid-level PC users.

### How This Manual Is Organized

This manual is organized as follows:

- **Overview:** Describes the GW\_SysVista module and GW\_SysVista GUI.

This manual contains the following images, used to indicate that a segment of text requires special attention:

-  **Additional Information:** Additional information is used to indicate shortcuts or tips.
-  **Warning:** Warnings are used to indicate possible problem areas, such as a risk of data loss or incorrect/unexpected functionality.





This chapter describes the GW\_SysVista module and GW\_SysVista GUI (graphical user interface).

This chapter contains the following sections:

- **GW\_SysVista Terms:** Defines some crucial terms used in GW\_SysVista.
- **What is GW\_SysVista?:** Describes the purpose of GW\_SysVista.
- **Resource Options:** Describes the trunking resources used in GW\_SysVista.
- **Connection Options:** Describes the options for defining a connection activity.
- **Statistics:** Describes the statistics displayed in GW\_SysVista.
- **Interval Options:** Describes the interval options available in GW\_SysVista.
- **GW\_SysVista Alert:** Describes the alert feature of GW\_SysVista.
- **View Options:** Describes the view options available in GW\_SysVista.

## GW\_SysVista Terms

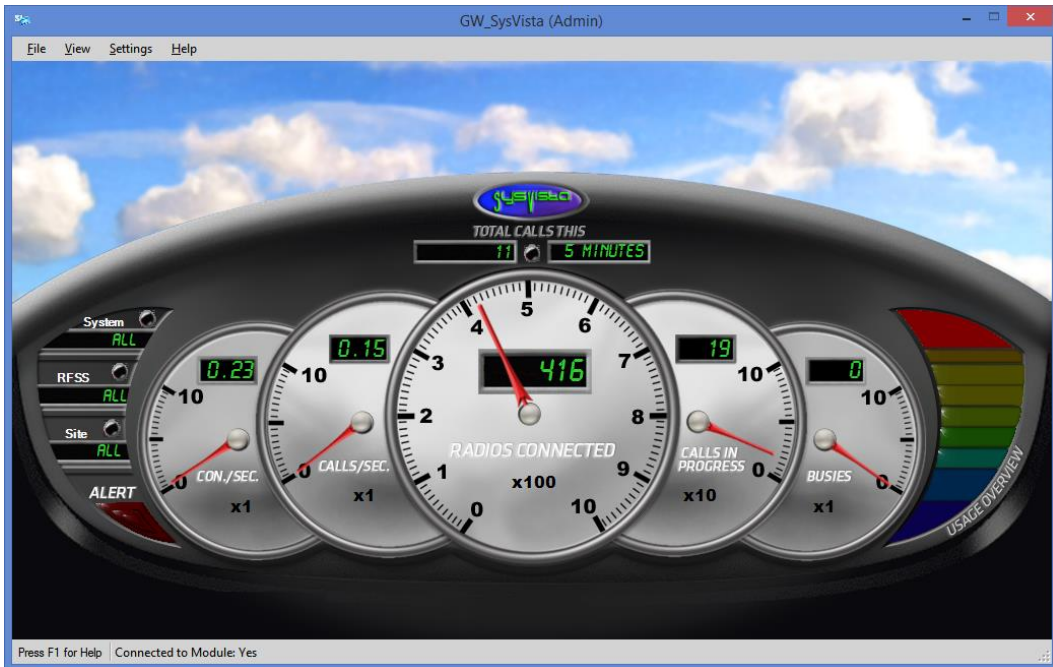
The following terms are used in GW\_SysVista. In order to understand the information shown in GW\_SysVista, you must understand these terms:

- **Calls:** In general terms, this is a conversation. A call can be:
  - **Group-based:** All radios affiliated to the target group hear the conversation and can key-up and speak in the conversation.
  - **Private:** Radio to radio
  - **Telephone:** Either radio to telephone switch or telephone switch to group or telephone switch to radio.
- **PTTs:** Calls can contain multiple PTTs. PTTs occur in a call when something about the call changes. Changes can include:
  - Who is speaking in the call.
  - Sites added and removed as radios included in the Call roam between sites.
- **Radio Activity:** This is activity that originates from the radio. See the *Radio Activities* section of *Appendix A* for a list of radio activities.
- **Connections:** A connection occurs when a radio becomes known to GW\_SysVista. This process is described in the *Connection Options* section below.

## What is GW\_SysVista?

GW\_SysVista is a real-time, interactive statistical reporting interface. The GW\_SysVista module receives packets from each GenWatch3 input connection. GW\_SysVista then compiles these packets into statistics. The GW\_SysVista GUI (Figure 1.1) displays these statistics for the selected time period and resource(s).

By design, the GW\_SysVista View window shows you easy-to-read, high-level information about your system(s). The large analog dials and straight-forward options make GW\_SysVista easy to read and understand. GW\_SysVista is *the* dashboard for your trunked radio system(s).



**Figure 1.1** – GW\_SysVista View Window

## Resource Options

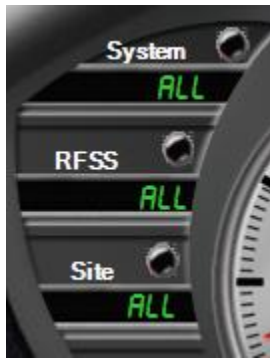
Resources are the systems, RFSSs and sites monitored by GenWatch3. All systems have a system ID and at least one site, but not all systems have a RFSS (such as single-site systems). For these systems, the RFSS acts as a placeholder to give them the same organization as multisite systems.

Behind the scenes, GW\_SysVista gathers statistics specific to each of these resources. GW\_SysVista then allows you to *drill down* on your statistics, by choosing a resource:

- **Systems:** Select “All” for all systems. Choose a specific system ID to view statistics for the selected system ID and to allow selection for a specific RFSS.
- **RFSS:** Select “All” for all RFSSs under the selected system. Choose a specific RFSS to view statistics for the selected RFSS under the selected system and to allow selection for a specific site ID.
- **Sites:** Select “All” for all site IDs under the selected RFSS for the selected system. Choose a specific site ID to view statistics for the selected site ID under the selected RFSS. GW\_SysVista ignores activity from “console” sites with a site ID of “0”.



**Drill Down:** This refers to eliminating some data in order to view specific data. It is also known as a filter.



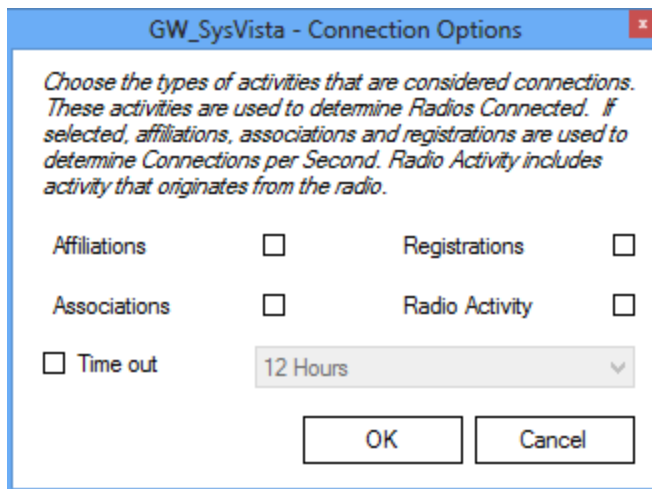
**Figure 1.2** – Dashboard Resource Selection

## Connection Options

A connection occurs when a radio becomes known to GW\_SysVista. A connection is the result of one of the following activities:

- Affiliations
- Associations
- Registrations
- Radio Activity (See the *Radio Activities* section of *Appendix A* for a list of radio activities)

Connections are used to determine the **Radios Connected** and **Connections per Second** statistics. The **Connections per Second** statistic does not include radio activity.



**Figure 1.3** – Connection Options Window

A radio is counted in the **Radios Connected** value if its most recent activities include one of the following and its corresponding option is checked in the *Connection Options* window.

- Affiliation
- Association
- Registration
- Radio Activity



Some systems issue Deaffiliations without issuing Deregistrations. In these systems if you choose to count Registrations/Deregistrations then you should also select Affiliations / Deaffiliations to avoid an inaccurate radios connected count.



For multisite systems, a deaffiliation will not remove a connected radio. Multisite systems include SmartZone, P25 and Dimetra.

A radio is **not** counted in the **Radios Connected** value if its most recent activity is one of the following and its corresponding option is checked in the *Connection Options* window.

- Deaffiliation
- Disassociation
- Deregistration

A radio is **not** counted in the **Radios Connected** value if its most recent activity is older than the specified **Time Out** period and the **Time Out** option is checked. The recommended timeout period is 12 hours.

Time Out Period options include:

- 1 Hour
- 2 Hours
- 4 Hours
- 8 Hours
- 12 Hours
- 24 Hours
- 48 Hours
- 1 Week
- 2 Weeks
- 3 Weeks
- 4 Weeks

These options are saved to your GenWatch3 user profile and are restored when you open the GW\_SysVista GUI.

## **Ignore Consoles**

Option to not consider Consoles in connected radios statistics.

## **Ignore Conventional Sites**

Option to not consider Conventional Sites in connected radios statistics. This only applies to ATIA data.



Some Digital Conventional Calls have an ID of zero. SysVista will treat these as a single conventional radio.



These settings do not affect the list of sites available on the Dashboard view or the Dial Options screen.

## Statistics

GW\_SysVista tracks the following statistics:

- **Total Calls:** Total number of *Calls* (for multisite input) or *PTTs* (for single-site input) initiated (started) on all selected resources within the selected time period. For multisite systems, a call might initiate on multiple sites. For this reason, the sum of **Total Calls** for each site in a RFSS may be greater than the **Total Calls** for the site's RFSS or system. In the Dashboard view this statistic does not provide an analog dial.
- **\*Connections per Second (Con./Sec. or Connections/Sec.):** Shows how many connections per second have been received among all selected resources within the selected time period. This is based on your connection options.
- **\*Calls per sec. (Calls/Sec.):** Indicates how many *Calls* (for multisite input) or *PTTs* (for single-site input) per second have been active among all selected resources within the selected time period.
- **\*\*Radios Connected:** Shows how many radios are known to be connected within all selected resources. This is based on your connection options.
- **\*\*Calls in Progress:** Shows how many *Calls* (for multisite input) or *PTTs* (for single-site input) are known to be in progress among all selected resources.
- **\*\*Busies:** Shows how many busies are known to be in progress among all selected resources.



\* - GW\_SysVista shows these values as decimal numbers, rounded to the nearest 0.1. Values between 0.05 and 0.1 are rounded to 0.1. All values less than 0.05 are shown as 0.

\*\* - This value does not consider the selected time period.

Each analog dial (gray dial with red needle) contains a multiplier value (x1, x10, x100, etc.). The multiplier value indicates which multiple of 10 the analog dial represents. This multiplier does not apply to the digital value (green number in the black box) within the analog dial.

## Usage Overview

GW\_SysVista shows the following value in graphical format (graphical bar on the rightmost side of the GW\_SysVista GUI):

- **Usage Overview:** This bar is an estimate of your total system usage. System usage is calculated using the following formula:
  - *Unit Time / (Voice Slots x Period Time)* where:
    - **Unit Time** = Total unit airtime among the selected resource in the selected time period.
    - **Voice Slots** = Total voice slots among the selected resources. Each Channel in GW\_Alias has a **Channel Type** option. This option determines the channel's slots.
    - **Period Time** = Total time that has elapsed in the selected time period since the GenWatch3 service started.



**Figure 1.4** – Usage Overview

Each segment in the **Usage Overview** bar represents about 10% system usage. When the system reaches 10% usage, the bottom bar will light up. When the system reaches 90% usage, all bars will light up.



The **Usage Overview** determines the number of channels for a site by referencing the GW\_Alias database. If you feel your usage is too high or too low, please check the channels under the site or sites you are monitoring. Verify the following:

- The channels exist in GW\_Alias.
- Each voice channel is marked as **Voice Channel** in the **Channel Options** section of GW\_Alias.
- Each voice channel's correct **Channel Type** is selected in the **Channel Options** section of GW\_Alias.



The values in GW\_SysVista are cleared each time the GenWatch3 service is stopped and each time the GenWatch3 service machine is restarted. If you restart the GenWatch3 service machine, the statistical values will need to rebuild over time to show entire daily, monthly, etc. values.

## Interval Options

An interval is the amount of time GW\_SysVista includes when showing the following values:

- Total Calls
- Con./Sec.
- Calls/Sec.

GW\_SysVista will show statistics for the selected time period. GW\_SysVista allows you to view system statistics for the following time periods:

- **Year:** Current Year. If the current date/time is 3/21/2010 3:34 PM, then the statistics will only include 1/1/2010 12:00 AM to 3/21/2010 3:34 PM. When the year on your system time changes, the values will clear.
- **Month:** Current Month. GW\_SysVista will only show statistics for the current month. If the current date/time is 3/21/2010 3:34 PM, then the statistics will only include 3/1/2010 12:00 AM to 3/21/2010 3:34 PM. When the month on your system time changes, the values will clear.
- **Day:** Current Day. If the current date/time is 3/21/2010 3:34 PM, then the statistics will only include 3/21/2010 12:00 AM to 3/21/2010 3:34 PM. When the day on your system time changes, the values will clear.
- **Hour:** Current Hour. If the current date/time is 3/21/2010 3:34 PM, then the statistics will only include 3/21/2010 3:00 PM to 3/21/2010 3:34 PM. When the hour on your system time changes, the values will clear.
- **30 Minutes:** Current 30 minutes. If the current date/time is 3/21/2010 3:29 PM, then the statistics will only include 3/21/2010 3:00 PM to 3/21/2010 3:29 PM. If the current date/time is 3/21/2010 3:43 PM, then the statistics will only include 3/21/2010 3:30 PM to 3/21/2010 3:43 PM. When the minute on your system time changes to 30 or 00, the values will clear.
- **15 Minutes:** Current 15 minutes. If the current date/time is 3/21/2010 3:29 PM, then the statistics will only include 3/21/2010 3:15 PM to 3/21/2010 3:29 PM. When the minute on your system time changes to 15, 30, 45 or 00, the values will clear.
- **5 Minutes:** Current 5 minutes. If the current date/time is 3/21/2010 3:29 PM, then the statistics will only include 3/21/2010 3:25 PM to 3/21/2010 3:29 PM. When the minute on your system time changes to 5, 10, 15, 20, 25, 30, 35, 40, 45, 50, 55 or 00, the values will clear.



Figure 1.5 – Dashboard Interval Selection

Interval ▾ 5 Minutes

Figure 1.6 – Multi-View Interval Selection



## **GW\_SysVista Alerts**

GW\_SysVista activates (lights up) its Alert light when it receives an interface board related diagnostic within its selected resources. Click on the Alert light to acknowledge (deactivate) this alert. Deactivating the Alert light will notify all other active GW\_SysVista screens that the alert was acknowledged.



**Figure 1.7** – GW\_SysVista Alert Light (active)

These diagnostic alerts can then be investigated via other GenWatch3 modules, such as GW\_Reports if you are archiving or GW\_Channel if you have GW\_Channel open when the alert occurs.

## View Options

GW\_SysVista offers two statistical views:

### Dashboard

This view shows all statistics (described in the Statistics section above) for the selected resource(s). The only options on this view are the interval and the resources.

### Multi-view

This view shows up to 20 customized dials. Each dial shows a statistic on the selected resource for the selected interval. You can add or remove dials at any time. The settings in this view are saved in your GenWatch3 user's profile.

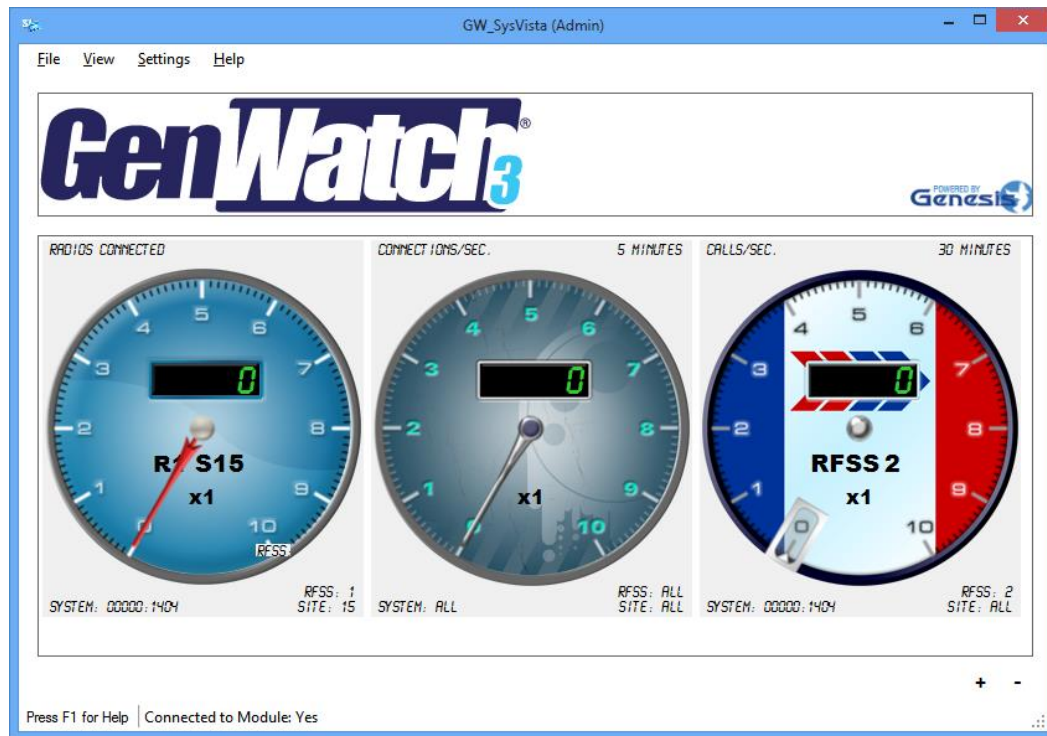


Figure 1.8 – Multi-View Window

## Multi-View Banner

Located at the top of the Multi-View screen is the *Banner*.



**Figure 1.9** – Multi-View Banner

This banner can be hidden by unchecking the **Multi-View Banner** option located under **View** in the menu bar at the top. The picture for the banner can be changed with the following steps:

1. Create a jpeg graphic that is between 200 x 100 pixels and 2,000 x 1,000 pixels.
2. Save the image as *Banner.jpg*.
3. Place the new file in the  
*C:\Program Data \Genesis\GenWatch3\Images\SysVista* folder

## Adding a Dial

To add a dial:

1. Click the **Add** button.
2. Select a **System**: For all Systems, select All.
3. Select a **RFSS**: For all RFSSs, select All (you must select a System before you can select a RFSS).
4. Select a **Site**: For all Sites, select All (you must select a RFSS before you can select a Site).
5. Select a **Statistic**.
6. Select an **Interval**. Some statistics are not interval based and this option will be disabled for those.
7. Enter a **Title** for the dial (50 characters maximum).
8. Checking the **Thresholds** option will put a colored ring around the edge of the dial. This ring represents a percent of the thresholds specified until the red threshold is met or exceeded. When the value of the dial meets or exceeds the specified threshold, this ring will turn the respective color.
9. Select a background for the dial. The background selection does not affect dial functionality.

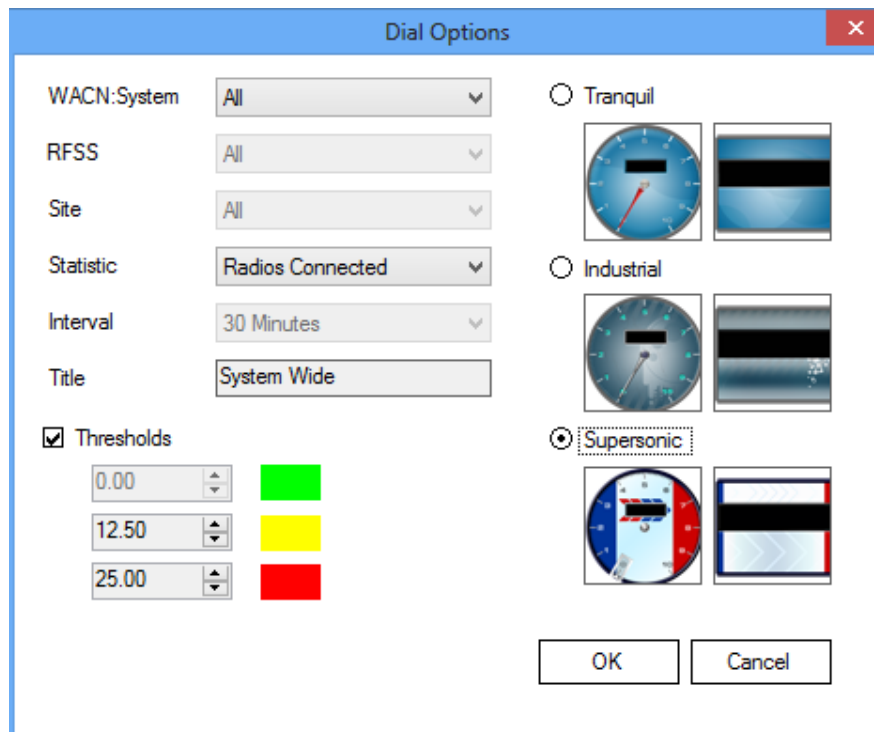


Figure 1.10 – Multi-View Dial Options Window

## Updating a Dial

To update a dial:

1. Select a dial by clicking on it: GW\_SysVista shows the dial outlined in blue.
2. Right-click the dial.
3. Select the **Properties...** option from the menu that appears.
4. Follow the steps from the *Adding a Dial* instructions above.

## Removing a Dial

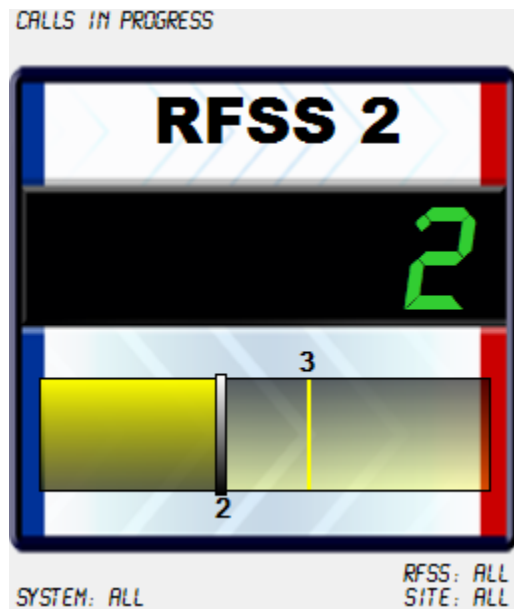
To remove a dial:

1. Select a dial by clicking on it: GW\_SysVista shows the dial outlined in blue.
2. Click the **Remove** button.

## Toggling a Dial to Number Only view

To toggle Number Only view:

1. Select a dial by clicking on it: SysVista shows the dial outlined in blue.
2. Right-click the dial.
3. Select the **Number Only** option from the menu that appears.
4. To go back to Dial view repeat steps 1-3.



**Figure 1.11** – Multi-View Dial in Number Only view



This chapter describes SysVista's Key Performance Indicators (KPIs) feature.

This chapter contains the following sections:

- **What are KPIs?:** Provides a high-level overview of KPIs.
- **KPI Storage and Availability:** Describes where KPIs are stored and how KPI data is accessed.
- **KPI Table Definitions:** Provides a detailed description of each KPI table and its columns.
- **KPI View Definitions:** Provides a detailed description of each KPI table's view and its columns.
- **KPI Options:** Describes the available KPI feature options and how to set them.

### *What are KPIs?*

KPIs are statistical values, at each resource level, that are aggregated and stored on a specified interval. An example of a KPI is "Radios Currently Connected to Site 1 under RFSS 1 under System A4A".

### *KPI Storage and Availability*

KPIs are stored in three following tables within the GenWatch3 database:

- **KPISysVistaSystems:** KPIs aggregated to the system level.
- **KPISysVistaZones:** KPIs aggregated to the RFSS level.
- **KPISysVistaSites:** KPIs aggregated to the site level.

These tables are accessible via the following views in the GenWatch3 database:

- **Kpi.SysVista.Systems:** Access to the KPISysVistaSystems table.
- **Kpi.SysVista.Zones:** Access to the KPISysVistaZones table.
- **Kpi.SysVista.Sites:** Access to the KPISysVistaSites table.

## KPI Table Definitions

### KpiSysVistaSystems

Genesis will store existing SysVista system KPIs in the following table structure. Each row in this table will represent the current set of SysVista KPIs for a system, qualified by WACN. Columns include:

- **WACNId:** System's WACN
- **SystemId:** System Id
- **RadiosConnected:** Radios currently connected to this system. These include radios that have issued affiliations, registrations, associations and other radio-based or acknowledged activity (PTTs, Statuses, Dynamic Regrouping Ack, etc.) within the last 8 hours.
- **GroupCallsInProgress:** Group calls currently in progress on this system.
- **InterconnectCallsInProgress:** Interconnect calls currently in progress on this system.
- **PrivateCallsInProgress:** Private calls currently in progress on this system.
- **EmergencyCallsInProgress:** Emergency calls currently in progress on this system. NOTE: this value is a sub-category of group calls and is included in the *GroupCallsInProgress* value.
- **GroupVoicePathsInUse:** Voice paths (slots) currently in use for group calls on this system.
- **InterconnectVoicePathsInUse:** Voice paths (slots) currently in use for interconnect calls on this system.
- **PrivateVoicePathsInUse:** Voice paths (slots) currently in use for private calls on this system.
- **EmergencyVoicePathsInUse:** Voice paths (slots) currently in use for emergency group calls on this system. NOTE: this value is a sub-category of group calls and is included in the *GroupVoicePathsInUse* value.
- **AvailableVoicePaths:** Number of voice paths (slots) not in use on this system. This value is  $TotalVoicePaths - GroupVoicePathsInUse - InterconnectVoicePathsInUse - PrivateVoicePathsInUse$ .
- **TotalVoicePaths:** All voice paths (slots) on this system. NOTE: This value is derived from channel-level settings in the GenWatch3 Alias database.
- **BusiesInQueue:** Busies currently in queue on this system.
- **ConnectionsPerSecond:** Connections per second on this system, within the current 5-minute interval. This is based on all radio-based activity types. These include affiliations, registrations, associations and other radio-based or acknowledged activity (PTTs, Statuses, Dynamic Regrouping Ack, etc.)
- **CallsPerSecond:** Start of Calls received per second on this system within the current 5-minute interval.
- **DT:** Date and Time these statistics were written.



**NOTE:** The current calls/second and connections/second will be taken from SysVista's 5-minute interval values. Every 5 minutes, this interval is reset and will show 0 for a few seconds, until the next call or connection is received. Example: If the first call is received 3 seconds into the new interval, we will show 0.333 calls/second.

## KpiSysVistaZones

Genesis will store existing SysVista RFSS KPIs in the following table structure. Each row in this table will represent the current set of SysVista KPIs for a RFSS, qualified by WACN and System. Columns include:

- **WACNId:** System's WACN
- **SystemId:** RFSS's System
- **ZoneId:** RFSS Id
- **RadiosConnected:** Radios currently connected to this RFSS. These include radios that have issued affiliations, registrations, associations and other radio-based or acknowledged activity (PTTs, Statuses, Dynamic Regrouping Ack, etc.) within the last 8 hours.
- **GroupCallsInProgress:** Group calls currently in progress on this RFSS.
- **InterconnectCallsInProgress:** Interconnect calls currently in progress on this RFSS.
- **PrivateCallsInProgress:** Private calls currently in progress on this RFSS.
- **EmergencyCallsInProgress:** Emergency calls currently in progress on this RFSS. NOTE: this value is a sub-category of group calls and is included in the *GroupCallsInProgress* value.
- **GroupVoicePathsInUse:** Voice paths (slots) currently in use for group calls on this RFSS.
- **InterconnectVoicePathsInUse:** Voice paths (slots) currently in use for interconnect calls on this RFSS.
- **PrivateVoicePathsInUse:** Voice paths (slots) currently in use for private calls on this RFSS.
- **EmergencyVoicePathsInUse:** Voice paths (slots) currently in use for emergency group calls on this RFSS. NOTE: this value is a sub-category of group calls and is included in the *GroupVoicePathsInUse* value.
- **AvailableVoicePaths:** Number of voice paths (slots) not in use on this RFSS. This value is  $TotalVoicePaths - GroupVoicePathsInUse - InterconnectVoicePathsInUse - PrivateVoicePathsInUse$ .
- **TotalVoicePaths:** All voice paths (slots) on this RFSS. NOTE: This value is derived from channel-level settings in the GenWatch3 Alias database.
- **BusiesInQueue:** Busies currently in queue on this RFSS.
- **ConnectionsPerSecond:** Connections per second on this RFSS, within the current 5-minute interval. This is based on all radio-based activity types.

These include affiliations, registrations, associations and other radio-based or acknowledged activity (PTTs, Statuses, Dynamic Regrouping Ack, etc.)

- **CallsPerSecond:** Start of Calls received per second on this RFSS within the current 5-minute interval.
- **DT:** Date and Time these statistics were written.

## KpiSysVistaSites

Genesis will store existing SysVista site KPIs in the following table structure. Each row in this table will represent the current set of SysVista KPIs for a site, qualified by WACN, System, RFSS. Columns include:

- **WACNId:** System's WACN
- **SystemId:** RFSS's System
- **ZoneId:** Site's RFSS
- **SiteId:** Site Id
- **RadiosConnected:** Radios currently connected to this site. These include radios that have issued affiliations, registrations, associations and other radio-based or acknowledged activity (PTTs, Statuses, Dynamic Regrouping Ack, etc.) within the last 8 hours.
- **GroupCallsInProgress:** Group calls currently in progress on this site.
- **InterconnectCallsInProgress:** Interconnect calls currently in progress on this site.
- **PrivateCallsInProgress:** Private calls currently in progress on this site.
- **EmergencyCallsInProgress:** Emergency calls currently in progress on this site. NOTE: this value is a sub-category of group calls and is included in the *GroupCallsInProgress* value.
- **GroupVoicePathsInUse:** Voice paths (slots) currently in use for group calls on this site.
- **InterconnectVoicePathsInUse:** Voice paths (slots) currently in use for interconnect calls on this site.
- **PrivateVoicePathsInUse:** Voice paths (slots) currently in use for private calls on this site.
- **EmergencyVoicePathsInUse:** Voice paths (slots) currently in use for emergency group calls on this site. NOTE: this value is a sub-category of group calls and is included in the *GroupVoicePathsInUse* value.
- **AvailableVoicePaths:** Number of voice paths (slots) not in use on this site. This value is  $TotalVoicePaths - GroupVoicePathsInUse - InterconnectVoicePathsInUse - PrivateVoicePathsInUse$ .
- **TotalVoicePaths:** All voice paths (slots) on this site. NOTE: This value is derived from channel-level settings in the GenWatch3 Alias database.
- **BusiesInQueue:** Busies currently in queue on this site.
- **ConnectionsPerSecond:** Connections per second on this site, within the current 5-minute interval. This is based on all radio-based activity types. These include affiliations, registrations, associations and other radio-based or acknowledged activity (PTTs, Statuses, Dynamic Regrouping Ack, etc.)

- **CallsPerSecond:** Start of Calls received per second one this site within the current 5-minute interval.
- **DT:** Date and Time these statistics were written.



For ATIA, sites in the range of 1000-1999 are considered Vortex consoles

- *TotalVoicePaths* is the sum of *GroupVoicePathsInUse*, *PrivateVoicePathsInUse* and *InterconnectVoicePathsInUse*.
- *AvailableVoicePaths* is always 0.
- These voice paths are not aggregated that the RFSS or System level.

## KPI View Definitions

KPI data is available via the following views:

### Kpi.SysVista.Systems

Values aggregated at the System level within SysVista: Each row is qualified by WACN:

- [KpiSysVistaZones].WacnId
- [KpiSysVistaZones].SystemId
- [KpiSysVistaZones].ZoneId
- [KpiSysVistaZones].RadiosConnected
- [KpiSysVistaZones].GroupCallsInProgress
- [KpiSysVistaZones].InterconnectCallsInProgress
- [KpiSysVistaZones].PrivateCallsInProgress
- [KpiSysVistaZones].EmergencyCallsInProgress
- [KpiSysVistaZones].GroupVoicePathsInUse
- [KpiSysVistaZones].InterconnectVoicePathsInUse
- [KpiSysVistaZones].PrivateVoicePathsInUse
- [KpiSysVistaZones].EmergencyVoicePathsInUse
- [KpiSysVistaZones].TotalVoicePaths
- $\text{GroupVoicePathUtilization} = \frac{[\text{KpiSysVistaZones}].\text{GroupVoicePathsInUse}}{[\text{KpiSysVistaZones}].\text{TotalVoicePaths}}$
- $\text{InterconnectVoicePathUtilization} = \frac{[\text{KpiSysVistaZones}].\text{InterconnectVoicePathsInUse}}{[\text{KpiSysVistaZones}].\text{TotalVoicePaths}}$
- $\text{PrivateVoicePathUtilization} = \frac{[\text{KpiSysVistaZones}].\text{PrivateVoicePathsInUse}}{[\text{KpiSysVistaZones}].\text{TotalVoicePaths}}$
- $\text{EmergencyVoicePathUtilization} = \frac{[\text{KpiSysVistaZones}].\text{EmergencyVoicePathsInUse}}{[\text{KpiSysVistaZones}].\text{TotalVoicePaths}}$
- [KpiSysVistaZones].BusiesInQueue
- [KpiSysVistaZones].ConnectionsPerSecond
- [KpiSysVistaZones].CallsPerSecond
- [KpiSysVistaZones].DT

## Kpi.SysVista.Zones

Values aggregated at the RFSS level within SysVista: Each row is qualified by WACN and System:

- [KpiSysVistaZones].WacnId
- [KpiSysVistaZones].SystemId
- [KpiSysVistaZones].ZoneId
- [KpiSysVistaZones].RadiosConnected
- [KpiSysVistaZones].GroupCallsInProgress
- [KpiSysVistaZones].InterconnectCallsInProgress
- [KpiSysVistaZones].PrivateCallsInProgress
- [KpiSysVistaZones].EmergencyCallsInProgress
- [KpiSysVistaZones].GroupVoicePathsInUse
- [KpiSysVistaZones].InterconnectVoicePathsInUse
- [KpiSysVistaZones].PrivateVoicePathsInUse
- [KpiSysVistaZones].EmergencyVoicePathsInUse
- [KpiSysVistaZones].TotalVoicePaths
- $\text{GroupVoicePathUtilization} = \frac{[\text{KpiSysVistaZones}].\text{GroupVoicePathsInUse}}{[\text{KpiSysVistaZones}].\text{TotalVoicePaths}}$
- $\text{InterconnectVoicePathUtilization} = \frac{[\text{KpiSysVistaZones}].\text{InterconnectVoicePathsInUse}}{[\text{KpiSysVistaZones}].\text{TotalVoicePaths}}$
- $\text{PrivateVoicePathUtilization} = \frac{[\text{KpiSysVistaZones}].\text{PrivateVoicePathsInUse}}{[\text{KpiSysVistaZones}].\text{TotalVoicePaths}}$
- $\text{EmergencyVoicePathUtilization} = \frac{[\text{KpiSysVistaZones}].\text{EmergencyVoicePathsInUse}}{[\text{KpiSysVistaZones}].\text{TotalVoicePaths}}$
- [KpiSysVistaZones].BusiesInQueue
- [KpiSysVistaZones].ConnectionsPerSecond
- [KpiSysVistaZones].CallsPerSecond
- [KpiSysVistaZones].DT

## Kpi.SysVista.Sites

Values aggregated at the Site level from the **KpiSysVistaSites** table. Each row is qualified by WACN, System, and RFSS.

- [KpiSysVistaSites].WacnId
- [KpiSysVistaSites].SystemId
- [KpiSysVistaSites].ZoneId
- [KpiSysVistaSites].SiteId
- [KpiSysVistaSites].RadiosConnected
- [KpiSysVistaSites].GroupCallsInProgress
- [KpiSysVistaSites].InterconnectCallsInProgress
- [KpiSysVistaSites].PrivateCallsInProgress
- [KpiSysVistaSites].EmergencyCallsInProgress
- [KpiSysVistaSites].GroupVoicePathsInUse
- [KpiSysVistaSites].InterconnectVoicePathsInUse
- [KpiSysVistaSites].PrivateVoicePathsInUse
- [KpiSysVistaSites].EmergencyVoicePathsInUse
- [KpiSysVistaSites].TotalVoicePaths
- $\text{GroupVoicePathUtilization} = \frac{[\text{KpiSysVistaSites}].\text{GroupVoicePathsInUse}}{[\text{KpiSysVistaSites}].\text{TotalVoicePaths}}$
- $\text{InterconnectVoicePathUtilization} = \frac{[\text{KpiSysVistaSites}].\text{InterconnectVoicePathsInUse}}{[\text{KpiSysVistaSites}].\text{TotalVoicePaths}}$
- $\text{PrivateVoicePathUtilization} = \frac{[\text{KpiSysVistaSites}].\text{PrivateVoicePathsInUse}}{[\text{KpiSysVistaSites}].\text{TotalVoicePaths}}$
- $\text{EmergencyVoicePathUtilization} = \frac{[\text{KpiSysVistaSites}].\text{EmergencyVoicePathsInUse}}{[\text{KpiSysVistaSites}].\text{TotalVoicePaths}}$
- [KpiSysVistaSites].BusiesInQueue
- [KpiSysVistaSites].ConnectionsPerSecond
- [KpiSysVistaSites].CallsPerSecond
- [KpiSysVistaSites].DT

## KPI Options

### Option Definitions

The KPIs feature provides the following options (defaults shown in **bold**):

- **KpiEnabled**: Write KPI values out to KpiSysVistaSites table
  - **1 = Enabled**
  - 0 = Disabled
- **KpiInterval**: Number of seconds between each time KPIs are calculated and written to the database. Default is **5**.
- **KpiUseTimeout**: Consider the values in KpiConnectionDefinitionTimeout and KpiConnectionDefinitionOption
  - **1 = True**
  - 0 = False
- **KpiConnectionDefinitionTimeout**: Actions to consider for a radio connection. Bitmask field. Value is sum of all applicable options. (Effects Radios Connected and Connections Per Second KPIs)
  - **0 = None**
  - **1 = Associations**
  - **2 = Affiliations**
  - **4 = Registrations**
  - **8 = RadioActivity**
- **KpiConnectionTimeoutPeriod**: Period in which a radio must issue a connection action in order to be considered connected. (Effects Radios Connected and Connections Per Second KPIs)
  - 0 = 1 Hour
  - 1 = 2 Hours
  - 2 = 4 Hours
  - **3 = 8 Hours**
  - 4 = 12 Hours
  - 5 = 1 Day
  - 6 = 2 Days
  - 7 = 1 Week
  - 8 = 2 Weeks
  - 9 = 3 Weeks
  - 10 = 4 Weeks

## Setting KPI Options

KPI options are stored in the *ModuleSettings* table of the GenWatch3 database under the module Id of the SysVista module (see the *Modules* table) and a Parent of 0. If a setting is not present, the KPIs feature uses the default shown above.

Once you change a KPI feature setting, you must restart the GenWatch3 service in order for the change to take effect.

Example KPI setting in the ModuleSettings table for KpiInterval:

<b>ModuleSettings</b>				
<b>ID</b>	<b>ModuleId</b>	<b>Parent</b>	<b>FieldName</b>	<b>FieldValue</b>
14289	23	0	KpiInterval	10



## Radio Activities

This section shows each packet activity that is considered radio activity by the logic in GW\_SysVista. If your connection definition includes **Radio Activity**, GW\_SysVista will consider radios connected via these activities in the **Radios Connected** statistic. These activities do not affect the **Connections per Second** statistic.

Activity
Busy
ChangeMe Request
Channel Assignment
Dynamic Regrouping ACK
Emergency Alarm
Message
Status
RM/RT Command ACK

## Radio Disconnected Activity

This section shows each activity that is considered a radio disconnection by the logic in GW\_SysVista. These packets will result in GW\_SysVista removing a radio from one or more connected radios lists. These radio disconnected activities may differ from other GenWatch3 modules.

Activity	List(s) Affected
Deaffiliation	Affiliations
Deregistration	Registrations
Disassociation	Associations
Selective Inhibit ACK	Affiliations, Registrations and Associations