



**GenWatch3<sup>®</sup>**  
**GW\_ATIA Quickstart Guide**  
**Software Version 2.16.4**

---

**GenWatch<sub>3</sub>**

600-2.16.4-R.1  
4/5/2019



## Trademarks

The following are registered trademarks of Motorola: ATIA, SmartZone.

Any other brand or product names are trademarks or registered trademarks of their respective holders.

## The Genesis Group Trademark Information

GenWatch3® is a registered trademark of GenCore Candeo, LTD., a subsidiary of Burks GenCore Co., Inc. D.B.A. The Genesis Group and Phil Burks.

## Copyright

Copyright © 2006-2019; Burks GenCore Co., Inc. D.B.A. The Genesis Group and Phil Burks. All rights are reserved. No part of this publication or the associated program may be reproduced, transmitted, transcribed, in whole or in part, in any form or by any means, whether it is mechanical, magnetic, optical, electronic, manual or otherwise, without the prior written consent of Burks GenCore Co., Inc. D.B.A:

The Genesis Group and Phil Burks  
5800 Eagles Nest Blvd  
Tyler, Texas 75703.

Includes technology licensed from Motorola.

## Disclaimer

The GenWatch3 GW\_ATIA Quickstart Guide is printed in the U.S.A. Burks GenCore Co., Inc. D.B.A. The Genesis Group and Phil Burks believe that the information included in this manual is correct; however, Burks GenCore Co., Inc. D.B.A. The Genesis Group and Phil Burks reserves the right to alter, revise and make periodic changes to the manual and its contents. Burks GenCore Co., Inc. D.B.A. The Genesis Group does not assume responsibility to notify any person of such revisions or changes. While we have taken strides to carefully examine our software and documentation and believe that it is reliable, the Genesis Group and Phil Burks assume no responsibility for the use of the manual, or GenWatch3 software, nor for any patent infringements or other rights of third parties who may use the manual or the GenWatch3 software. Burks GenCore Co., Inc. D.B.A. The Genesis Group and Phil Burks make no representations or warranties with respect to the contents or fitness for a particular purpose beyond the cost of the software paid by the end-user.

The software contains valuable trade secrets and proprietary information. Unauthorized use of the manual or software can result in civil damages and criminal prosecution. As an end user, you agree to abide by and heed these statements.

## License

Title to the media on which the program is recorded and to the documentation in support of the product is transferred to you, but title to the program, and all subsequent copies of the program, despite the form or media in or on license is not a sale of the original or any subsequent copy. You assume responsibility for the selection of the program to achieve your intended results, and for the installation, use, and results obtained from the program.

Refer to the GenWatch3 Manual Overview for your full license. All license information contained on pages 4-7 (Book 600-2.16.4-AA.1) are to be considered as contained herein.

## Support

Customer satisfaction is our number one priority at Genesis. We are here to provide you with the best software possible, and we want to know when you have any questions, concerns or problems with GenWatch3 so that we can make it a better product for everyone.

Refer to the *Troubleshooting & Support* section of the GenWatch3 Manual Shell (Book 600-2.16.4-AA.1) for complete support and contact information.

## Document History

Revision	Description	Author
2.0.2	Initial Release	JAW
2.0.3	Revision before release	JPS
2.0.4	Described <i>Source</i> option and updated screenshots	JAW
2.0.4	Slight rewording of text in the Connection Settings section	JAW
2.0.4	Added two thumbnail screenshots to show options available when GenGET or Zone Controller are selected.	KIH
2.0.5	Revision before release	TDW
2.0.6	Updated screenshots for F1 Help	REB
2.0.6.6	Revisions before release	KIH
2.2	Document reviewed	WRK
2.3	Release Revisions	REB
2.4	Revisions Before Release	WRK
2.5	Revisions Before Release	CWF
2.6	Revisions Before Release	CWF
2.7	Revisions Before Release	JAW
2.8	Revisions Before Release	CWF
2.9	Revisions Before Release	CWF
2.10	Revisions Before Release	ATG
2.11	Conversion to docx	BCY
2.11	Revisions Before Release	ATG
2.12	Revisions Before Release	JAW
2.13	Revisions Before Release	ATG
2.14	Revisions Before Release	JAW
2.15	Revisions Before Release	REB
2.16	Revisions Before Release	JPS

# Table of Contents

---

<i>Trademarks</i> .....	3
<i>The Genesis Group Trademark Information</i> .....	3
<i>Copyright</i> .....	3
<i>Disclaimer</i> .....	3
<i>License</i> .....	3
<i>Support</i> .....	3
DOCUMENT HISTORY .....	4
<b>TABLE OF CONTENTS</b> .....	<b>5</b>
<b>ABOUT THIS MANUAL</b> .....	<b>7</b>
GOALS .....	7
WHO SHOULD READ THIS MANUAL? .....	7
HOW THIS MANUAL IS ORGANIZED .....	7
<b>CHAPTER 1 CONFIGURING THE GW_ATIA MODULE</b> .....	<b>9</b>
WHAT IS GW_ATIA?.....	9
LOADING THE GW_ATIA GUI .....	10
ADDING ATIA CONNECTIONS .....	10
<i>Connection Settings</i> .....	10
<i>System Information</i> .....	11



### Goals

This document guides you through the GenWatch3 GW\_ATIA connection setup process. After you complete the steps in this document, your GenWatch3 installation will be configured to receive data from your GenGET 7+ Data Reader, Data Processor, or ATIA port on your Motorola SmartZone or Dimetra system.

### Who Should Read This Manual?



This document is written for an audience with an understanding of computer and network administration. Specifically, it is for those who have purchased GenWatch3 with an ATIA input source (Motorola SmartZone or Dimetra Systems).

### How This Manual Is Organized

This manual is organized as follows:

- **Configuring the GW\_ATIA Module:** Instructions on setting up a connection to a Zone Controller ATIA port or a GenGET 7.0+ Data Reader or Data Processor.

This manual contains the following images, used to indicate that a segment of text requires special attention:

-  **Additional Information:** Additional information is used to indicate shortcuts or tips.
-  **Warning:** Warnings are used to indicate possible problem areas, such as a risk of data loss, or incorrect/unexpected functionality.





## What is GW\_ATIA?

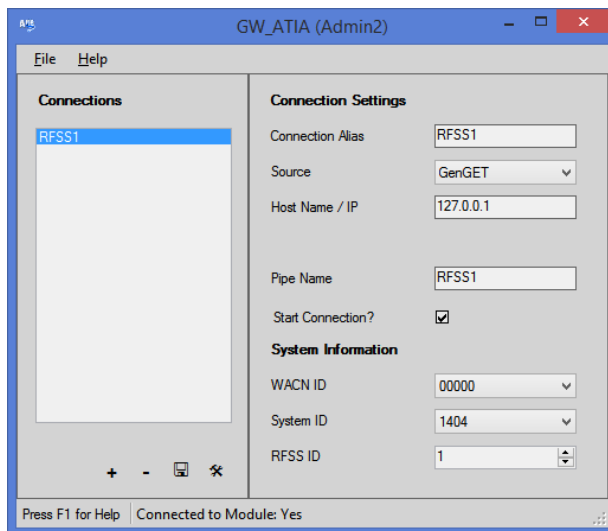
The GW\_ATIA module receives and decodes packets from one or more packet sources. Packet sources include:

- GenGET 7.0+ Data Readers
- GenGET 7.0+ Data Processors
- Zone Controller ATIA ports

GenGET Data Readers are attached to the ATIA port of a SmartZone or Dimetra Motorola trunked radio system. Each ATIA connection provides ATIA data for a Motorola trunked radio RFSS (one or more sites).

Each GenGET Data Reader or Data Processor is accessed via a GenWatch3 GW\_ATIA connection. The GW\_ATIA Graphical User Interface (GUI) allows you to manage each GW\_ATIA connection. The number of connections allowed within the GW\_ATIA GUI is restricted by your GenWatch3 license.

GW\_ATIA can also bypass the GenGET layer and connect directly to the ATIA port of the Zone Controller. However, GenWatch3 does not support ATIA archiving for reporting, so in most cases the GenGET layer is suggested.

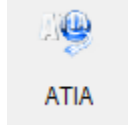


**Figure 1.1** – GW\_ATIA GUI

## Loading the GW\_ATIA GUI

Launch the GUI for the GW\_ATIA module by following the steps below:

1. Launch the GW\_LaunchPad. (see *GenWatch3 Core book*)
2. Locate the GW\_ATIA module icon in the Modules list. The GW\_ATIA module uses this icon:



3. Double-click the GW\_ATIA icon: This will load the GW\_ATIA GUI.

## Adding ATIA Connections

When the GenWatch3 application is installed, no connections are created. You must create a connection to receive ATIA data. To create a new connection, follow the steps below:

1. Click the **Add** button toward the bottom left of the GUI: This will create a new connection, named 'New Connection 1' in the **Connections** list with default properties.
2. Change the properties in the **Connection Settings** and **System Information** sections.

### Connection Settings

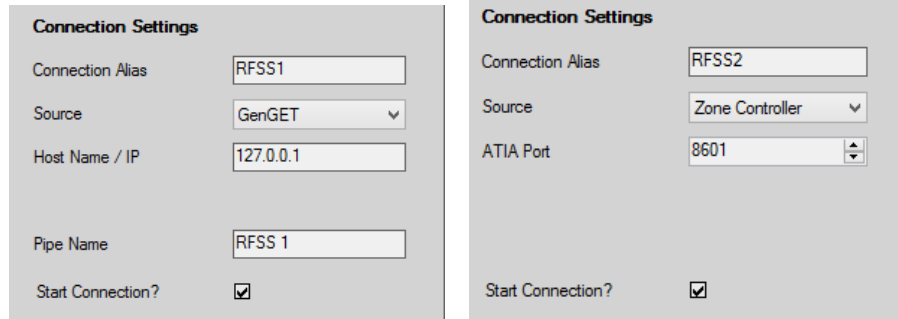
- **Connection Alias:** A name that describes this connection.
- **Source:** One of the following options:
  - **GenGET:** Select this option to connect to a GenGET 7.0+ Data Reader or Data Processor
  - **Zone Controller:** Select this option to connect directly to the Zone Controller's ATIA port.
- \* **Host Name / IP Address:** Host Name or IP Address of the machine running the GenGET Data Reader.
- \* **Pipe Name:** The pipe name assigned to the GenGET Data Reader or Data Processor during the GenGET setup.



The default pipe name will usually be RFSSX. Where 'X' indicates a RFSS Id set up in the GenGET setup utility. For example, a GW\_ATIA connection to RFSS 1 would use a pipe name of *RFSS1*. Confirm the **HostName / IP** and **Pipe Name** values with the values configured in your GenGET setup.

- **\*\* ATIA Port:** TCP port number of the Zone Controller’s ATIA port.
- **Start Connection:** If checked, then the GW\_ATIA module will start this connection. Uncheck this option if you want to retain the settings for a connection, but do not want to receive packets from the connection. In most cases, this option should be checked.

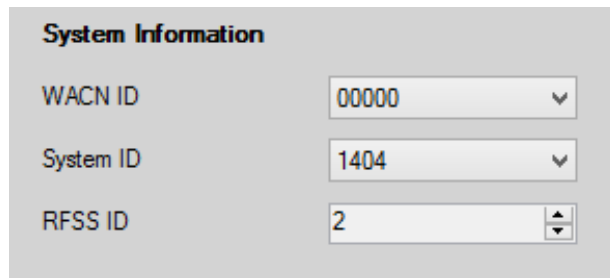
\* - Only available for GenGET source connections.  
 \*\* - Only available for Zone Controller source connections.



**Figure 1.2** – Connection settings are based on selected source.

## System Information

- **WACN ID:** 5-digit hexadecimal WACN ID assigned by Motorola to your infrastructure. (These values are limited to the WACN IDs in your license.)
- **System ID:** 4-digit, hexadecimal system ID assigned by Motorola to your infrastructure. If you have a 5-digit Motorola system ID, use only the last 4 digits. (These values are limited to the systems in your license under the selected WACN ID.)
- **RFSS ID:** Decimal RFSS ID (1-64). This is the ID of the Zone controller being connected to.



**Figure 1.3** – System Information