



**GenWatch3®**  
**GW\_GenSPOut**  
**Software Version 2.17.4**  
**Module Book**

---

# **GenWatch<sub>3</sub>**

**600-2.17.4-K.1**  
**2/15/2021**



## Trademarks

Any other brand or product names are trademarks or registered trademarks of their respective holders.

## The Genesis Group Trademark Information

GenWatch3® is a registered trademark of GenCore Candeco, LTD., a subsidiary of Burks GenCore Co., Inc. D.B.A. The Genesis Group and Phil Burks.

## Copyright

Copyright © 2006-2021; Burks GenCore Co., Inc. D.B.A. The Genesis Group and Phil Burks. All rights are reserved. No part of this publication or the associated program may be reproduced, transmitted, transcribed, in whole or in part, in any form or by any means, whether it is mechanical, magnetic, optical, electronic, manual or otherwise, without the prior written consent of Burks GenCore Co., Inc. D.B.A:

The Genesis Group and Phil Burks  
5800 Eagles Nest Blvd  
Tyler, Texas 75703.

Includes technology licensed from Motorola.

## Disclaimer

The GenWatch3 User's Manual is printed in the U.S.A. Burks GenCore Co., Inc. D.B.A. The Genesis Group and Phil Burks believe that the information included in this manual is correct; however, Burks GenCore Co., Inc. D.B.A. The Genesis Group and Phil Burks reserves the right to alter, revise and make periodic changes to the manual and its contents. Burks GenCore Co., Inc. D.B.A. The Genesis Group does not assume responsibility to notify any person of such revisions or changes. While we have taken strides to carefully examine our software and documentation and believe that it is reliable, the Genesis Group and Phil Burks assume no responsibility for the use of the manual, or GenWatch3 software, nor for any patent infringements or other rights of third parties who may use the manual or the GenWatch3 software. Burks GenCore Co., Inc. D.B.A. The Genesis Group and Phil Burks make no representations or warranties with respect to the contents or fitness for a particular purpose beyond the cost of the software paid by the end-user.

The software contains valuable trade secrets and proprietary information. Unauthorized use of the manual or software can result in civil damages and criminal prosecution. As an end user, you agree to abide by and heed these statements.

## License

Title to the media on which the program is recorded and to the documentation in support of the product is transferred to you, but title to the program, and all subsequent copies of the program, despite the form or media in or on license is not a sale of the original or any subsequent copy. You assume responsibility for the selection of the program to achieve your intended results, and for the installation, use, and results obtained from the program.

Refer to the GenWatch3 Manual Overview for your full license. All license information contained on pages 4-7 (Book 600-2.17.4-AA.1) are to be considered as contained herein.

## Support

Customer satisfaction is our number one priority at Genesis. We are here to provide you with the best software possible, and we want to know when you have any questions, concerns or problems with GenWatch3 so that we can make it a better product for everyone.

Refer to the *Troubleshooting & Support* section of the GenWatch3 Manual Shell (Book 600-2.17.4-AA.1) for complete support and contact information.

## Document History

Revision	Description	Author
2.0.2	Initial Release	
2.0.3	Updated Screenshots	CBH
2.0.3	Release Revisions	KIH
2.0.4	Updated screenshots	JAW
2.0.5	Release Revisions	REB
2.0.6	Update screenshots	CLB
2.0.6	Added SystemWatchII Filter	KIH
2.0.6.6	Revision before release	CLB
2.0.6.9	Added Serial Port Options	KIH
2.2	Document Reviewed	WRK
2.3	Revisions Before Release	CWF
2.4	Revisions Before Release	CWF
2.5	Revisions Before Release	CWF
2.6	Revisions Before Release	CWF
2.6	Added Emergency Alarm Ack, Message Ack and Status Ack to output packet types.	REB
2.7	Revisions Before Release	JAW
2.8	Revisions Before Release	ATG
2.9	Revisions Before Release	REB
2.10	Revisions Before Release	ATG
2.11	Converted to Docx format	CWF
2.12	Revisions Before Release	JAW
2.13	Revisions Before Release	ATG
2.14	Revisions Before Release	JAW
2.15	Revisions Before Release	REB
2.16	Revisions Before Release	JPS

# Table of Contents

<i>Trademarks</i> .....	3
<i>The Genesis Group Trademark Information</i> .....	3
<i>Copyright</i> .....	3
<i>Disclaimer</i> .....	3
<i>License</i> .....	3
<i>Support</i> .....	3
DOCUMENT HISTORY .....	4
<b>TABLE OF CONTENTS</b> .....	<b>5</b>
<b>ABOUT THIS MANUAL</b> .....	<b>7</b>
GOALS .....	7
WHO SHOULD READ THIS MANUAL? .....	7
HOW THIS MANUAL IS ORGANIZED .....	7
<b>CHAPTER 1 OVERVIEW</b> .....	<b>9</b>
WHAT IS GW_GENSPOUT? .....	9
FEATURES.....	11
DISPLAY OVERVIEW .....	12
<b>CHAPTER 2 GW_GENSPOUT SETUP</b> .....	<b>15</b>
THE DEFAULT PAGE .....	15
THE CONNECTION PAGE .....	16
<i>Connection Protocols</i> .....	17
TCP Server.....	17
UDP Server .....	18
Serial .....	19
OUTPUT PAGE .....	20
<i>What is an Output?</i> .....	21
<i>Adding Fields to an Output</i> .....	22
<i>Editing Selected Fields</i> .....	23
FILTER PAGE .....	27
<i>What is a Filter?</i> .....	27
<i>Adding Filter Items</i> .....	28
<i>Editing Filter Items</i> .....	28
<i>SystemWatchII Filter</i> .....	29
<i>ATIA Filter</i> .....	29
TIMED OUTPUT PAGE .....	31
<i>What is a Timed Output?</i> .....	31
INTERFACE PAGE.....	32
<i>What is an Interface?</i> .....	33
<i>Building an Interface</i> .....	33
SystemWatchII Custom Output .....	33
ATIA Custom Output.....	33
<i>ATIA Custom Output Description</i> .....	34
IMPORTING AND EXPORTING .....	34
<i>Exporting</i> .....	34
<i>Importing</i> .....	35



### Goals

This manual describes the role and function of the GW\_GenSPOut module in the GenWatch3 solution.

### Who Should Read This Manual?

This manual is written for the intended audience of mid-level trunked radio system users and mid-level PC users.

### How This Manual Is Organized

This manual is organized as follows:

- **Overview:** Describes the GW\_GenSPOut module and provides an overview of its features.
- **GW\_GenSPOut Setup:** Describes the process of setting up the GW\_GenSPOut module to suit your needs.

This manual contains the following images, used to indicate that a segment of text requires special attention:



**Additional Information:** Additional information is used to indicate shortcuts or tips.



**Warning:** Warnings are used to indicate possible problem areas, such as a risk of data loss, or incorrect/unexpected functionality.





This chapter describes the GW\_GenSPOut module and provides an overview of its features.

This chapter contains the following sections:

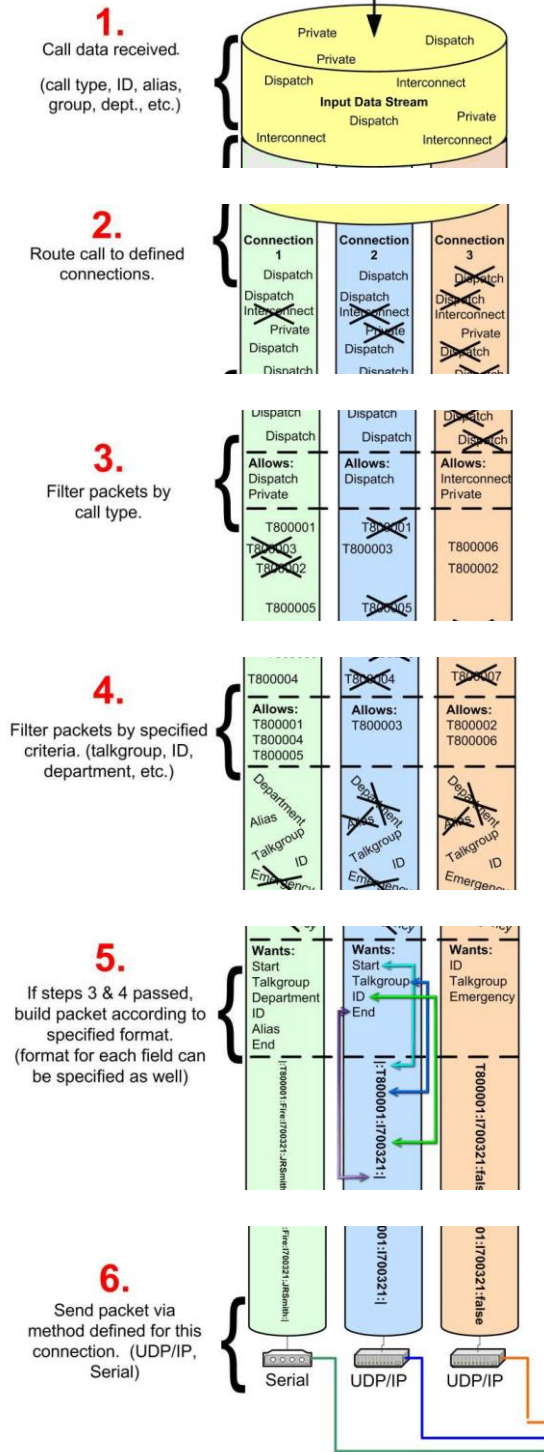
- **What is GW\_GenSPOut?:** A brief description of the purpose behind GW\_GenSPOut.
- **Features:** Describes the features provided by GW\_GenSPOut.
- **Display Overview:** Describes the GW\_GenSPOut graphical user interface (GUI) data entry and display areas.

## ***What is GW\_GenSPOut?***

The “**Genesis Specified Packet Output**” is a formatting and filtering engine for GenWatch3. GW\_GenSPOut allows GenWatch3 to function as a powerful and flexible middleware solution.

GW\_GenSPOut starts with the packet stream flowing through GenWatch3. The packets are parsed and duplicated to feed all the outbound connections that you have set up. Then the filters take over and eliminate any unnecessary data. Finally, GW\_GenSPOut reassembles the data you want to see in the order that you want to see it and passes it out to your device.

Let us break this down in detail



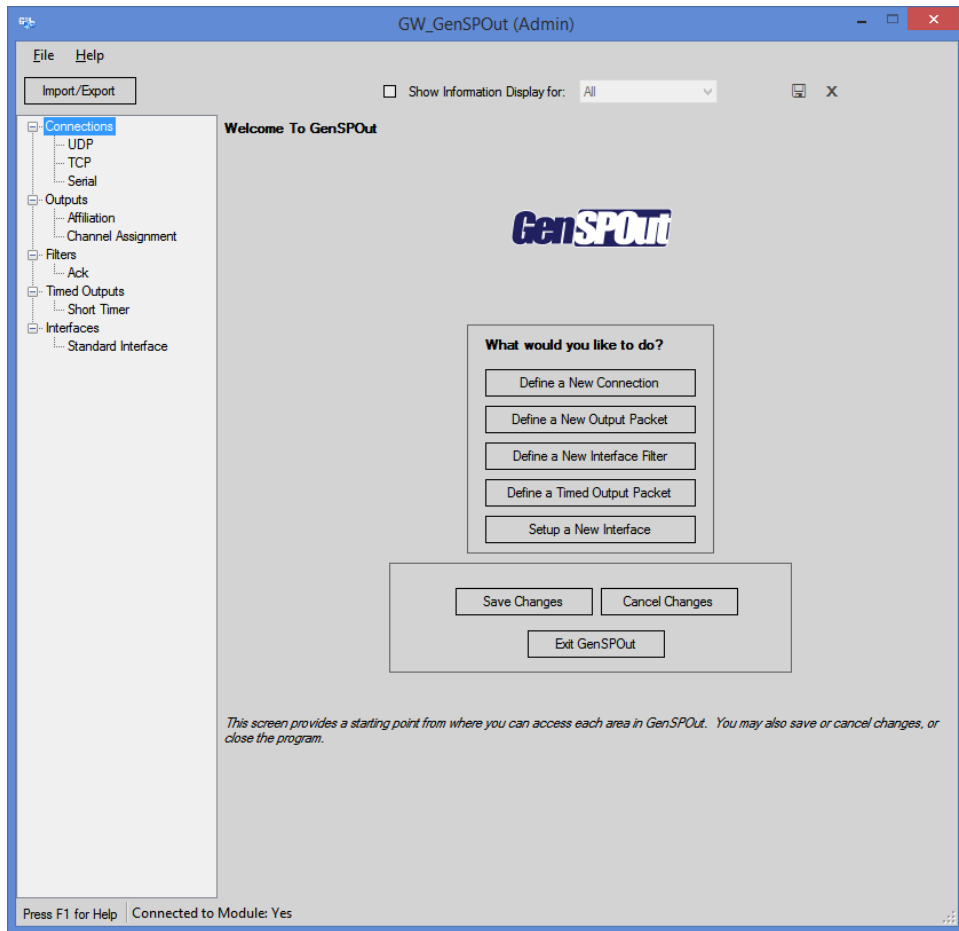
## Features

The GW\_GenSPOut feature set:

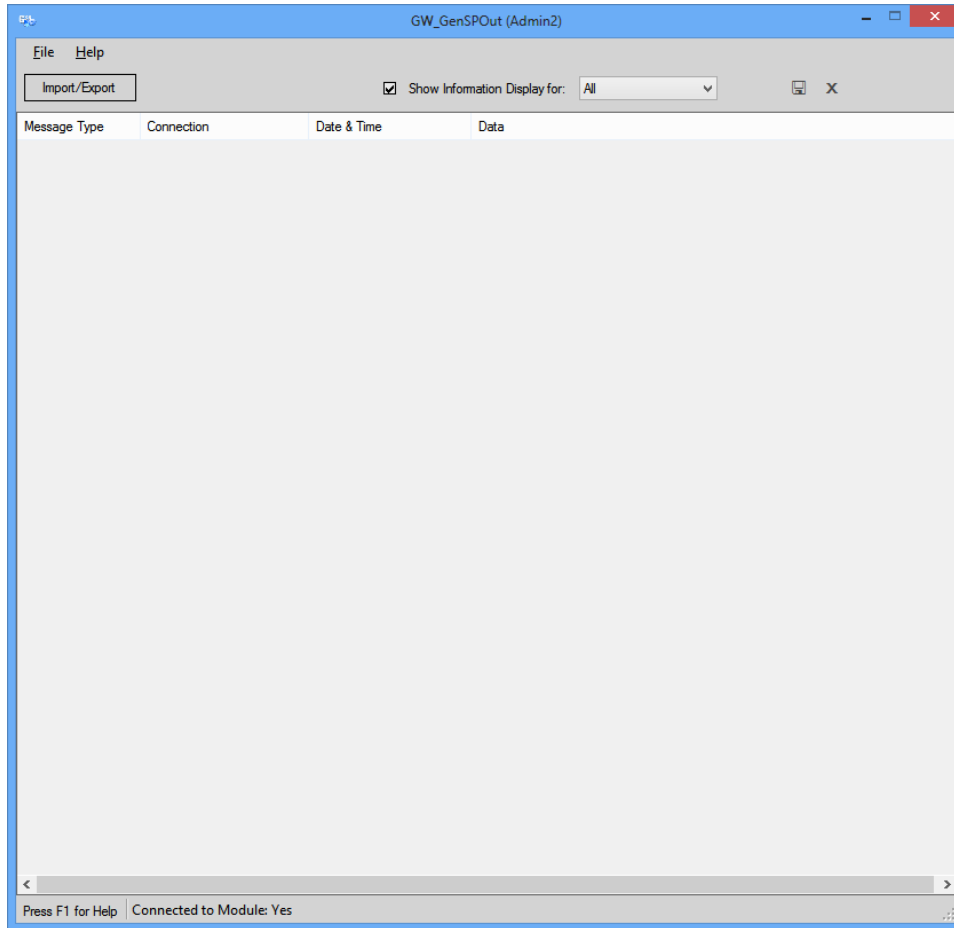
- Receives data from any GenWatch3 source.
- Filters data received.
  - Filter on any or all receivable fields.
  - Create complex (Boolean algebra) filters to specify *exactly* what information you want to see.
- Forms output from data received.
  - You select the fields to send out.
  - You set the format and order of the fields.
    - Specify prefix
    - Specify suffix
    - Trim
    - Pad
    - Replace
    - And more...
  - Add other fields
    - Static text that you specify
    - Time/date in many different formats
- Create timed output packets.
  - Can serve as heartbeat monitors or time sync packets.
- Send data out through one or more connection types.
  - TCP/IP Server
  - UDP Server
  - Serial Port
- Import/Export settings between GenSPOut installations.

With GW\_GenSPOut you can take one stream of data and send it to many locations, or even split the data into partial streams based on filters. You can also use GW\_GenSPOut to take several GenWatch3 inputs and combine them into one easy to process, formatted stream. The possibilities are nearly limitless!

## Display Overview



**Figure 1.1** – GW\_GenSPOut GUI



**Figure 1.2** - Information Display

The *Information Display* allows you to see exactly what information is being sent out from one or all the outbound connections.



Data exceeding 259 characters in length will be truncated at 256 characters and end with '...' to indicate not all information is visible.



This chapter describes the process of setting up the GW\_GenSPOut module to suit your needs.

This chapter contains the following sections:

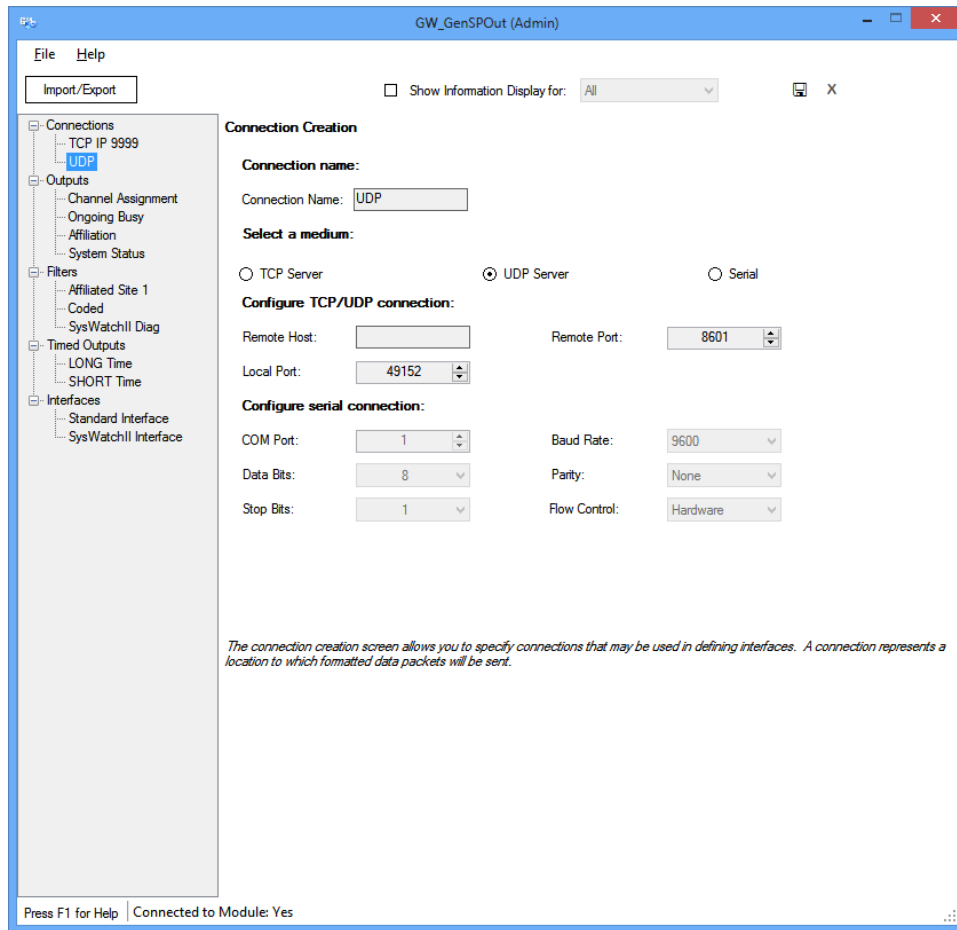
- **Default Page:** Describes the Default Page.
- **Connection Page:** Describes the Connection Page.
- **Output Page:** Describes the Output Page.
- **Filter Page:** Describes the Filter Page.
- **Timed Output Page:** Describes the Timed Output Page.
- **Interface Page:** Describes the Interface Page.
- **Importing and Exporting:** Describes the import and export feature.

### *The Default Page*

Shown in Figure 1.1, this page provides an access point for adding components to GW\_GenSPOut, saving or canceling changes, and closing the GUI. You can always bring up the default page by clicking on one of the component names (i.e. **Connections**) in the navigation tree.

You can alternatively add new GW\_GenSPOut components by right-clicking on an item in the navigation tree.

## The Connection Page



**Figure 2.1** – Connection Page

Figure 2.1 shows the Connection Page. Adding a new connection or selecting an existing one in the navigation tree will show this page.

You may enter a name by which you can refer to this connection in the future. As you change the name, you will see the change reflected in the navigation tree.



A connection is a data path. It represents a destination (data stream) for data packets that will be sent from GW\_GenSPOut to another device.



## Connection Protocols

There are three possible types for connections:

- TCP Server
- UDP Server
- Serial

### TCP Server

A TCP Server connection binds to a port on the local GW\_GenSPOut machine and listens for clients to connect to it. Once a client has connected, GW\_GenSPOut will begin sending packets to that client. Data sent from GW\_GenSPOut over a TCP connection will be formatted using ASCII character encoding. Characters unsupported in ASCII will be replaced with a question mark (?).

#### *Required Fields*

**Local Port:** This value identifies the port on the GW\_GenSPOut machine that will be used for communication. This is the port number that must be specified for any client looking to communicate with GW\_GenSPOut.

#### *Optional Fields*

**Remote Host:** The remote machine that can connect to this server. This value can be either an IP address (xxx.xxx.xxx.xxx) or a machine name.



If this value is specified, only clients originating from this computer name or IP address will be allowed to successfully connect. Leaving this value blank will allow any client to connect.

**Remote Port:** The remote port that can connect to this server.



If this value and a **Remote Host** value are specified, then only the remote host connecting from this port will be allowed to connect to the TCP server. If the **Remote Host** is not specified, a client from any host can connect, but only if it is bound to this port. Setting this value to zero will not restrict incoming connections to a specific remote port.

## **UDP Server**

A UDP Server broadcasts packets over a network using the UDP protocol. This protocol does NOT guarantee arrival of packets at the receiving end. Data sent from GW\_GenSPOut over a UDP connection will be formatted using ASCII character encoding. Characters unsupported in ASCII will be replaced with a question mark (?).

### *Required Fields*

**Remote Host:** The IP address to which this server will send UDP packets. This value can be either an IP address (xxx.xxx.xxx.xxx) or a machine name. To send packets to the entire network, enter 255.255.255.255 as the IP address. Alternatively, you can specify group broadcasts via 192.168.255.255, etc. To send UDP packets to a specified host only, enter a specific IP address here.

**Local Port:** The port on the local GW\_GenSPOut machine from which this UDP Server will send data packets.

**Remote Port:** The port to which the UDP Server will attempt to send packets. This is the port on which UDP clients should listen for datagrams.

## Serial

A serial connection uses the RS232 protocol to communicate to a remote device over a wired cable. Data sent from GW\_GenSPOut over a serial connection is encoded as UTF-8.

### *Required Fields*

**COM Port:** The serial port number on the local GW\_GenSPOut computer that the wired cable data should be sent on.

**Baud Rate:** The speed at which data should be communicated over the serial connection. The default, and most common value, is 9600.



Baud rates lower than 2400 may result in serial errors displayed and data loss in GW\_GenSPOut when sending large amounts of data.

**Data Bits:** The number of data bits per byte transferred over a serial connection. The default, and most common value, is 8.

**Parity:** This represents the parity-checking protocol. The default, and most common, value is “None.”

**Stop Bits:** Used to synchronize serial data transmission. The default, and most common, value is 1.

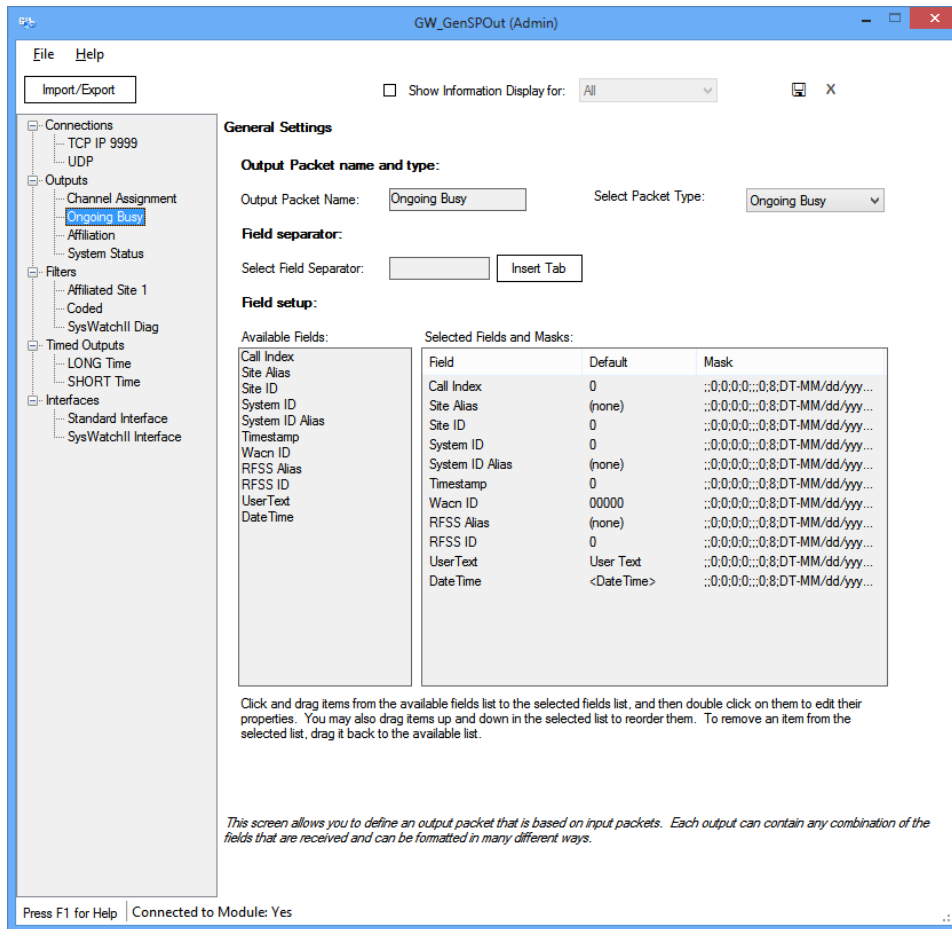
**Flow Control:** The handshaking protocol for serial port transmission of data. The default, and most common, value is “Hardware.”

### *Optional Fields*

N/A

Once you have finished entering all data for a connection, it is always a good idea to click **Save** in the control bar.

## Output Page



**Figure 2.2** – Output Page

Figure 2.2 shows the Output Page. Adding a new output or selecting an existing one in the navigation tree will bring up this page.

You may enter a name by which you can refer to this output in the future. As you change the name, you will see the change reflected in the navigation tree.

## What is an Output?

An output is a packet of data that will be sent out on one or more connections each time a certain packet type of information is received by GW\_GenSPOut. There are many trunked radio system packet types, the most common of which are:

- **Affiliation:** Indicates a radio is active on a group
- **Association:** Indicates a radio is active on a conventional channel
- **Busy:** Indicates that a busy condition has occurred
- **Call Update:** Received when a call has been updated
- **Channel Assignment:** Indicates an RF channel has been activated on the system
- **Current Control Channel:** Notifies radios of the current frequency on which data is being transmitted
- **Deaffiliation:** Indicates a radio is no longer active on a group
- **Deregistration:** Indicates a radio is no longer active on a site
- **Disassociation:** Indicates a radio is no longer active on a conventional channel
- **Emergency Alarm:** Received when the emergency button is pushed on a radio
- **Emergency Alarm Ack:** Received when an emergency alarm is acknowledged by another device
- **End of Busy:** Issued when a busy is ended
- **End of Call:** Issued when a call is ended
- **GPS Location:** Indicates that the radio's GPS device is updating or restating its GPS location information (requires Location module)
- **Location:** Indicates that the IMW is reporting a radio's GPS location information (requires Connect module)
- **Message:** Indicates a radio user has sent a message update
- **Message Ack:** Received when a device acknowledges a message
- **Ongoing Busy:** Received regularly while a busy condition persists
- **Ongoing Channel Assignment:** Received regularly while a channel assignment is still active
- **Presence:** Indicates that the IMW is reporting a radio's presence information (requires Connect module)
- **Registration:** Indicates a radio is active on a site
- **Ring:** Indicates that a private call request has been made
- **Ring Ack:** Indicates acknowledgment of a private call request
- **Ring Update:** Indicates that a private call request is in progress
- **Status:** Indicates a radio user has sent a status update
- **Status Ack:** Received when a device acknowledges a status update
- **System Status:** Reports current system status

Each of these packet types has its own set of fields that are available for output when they are received. Selecting a packet type from the packet type list will populate the **Available Fields** list with these fields.

## Adding Fields to an Output

Add fields to an output by clicking on a field in the **Available Fields** list and dragging it into the **Selected Fields and Masks** list. Upon doing this, you will see the field show up as selected with a default value and mask. The **Available Fields** list also supports multiselect. To select more than one field at a time, click on the first field you wish to add, then **Shift + click** or **Ctrl + click** additional fields. You can then drag all the selected items from the **Available Fields** list into the **Selected Fields and Masks** list.

To rearrange the order of fields you have selected, click and drag them up and down in the **Selected Fields and Masks** list.

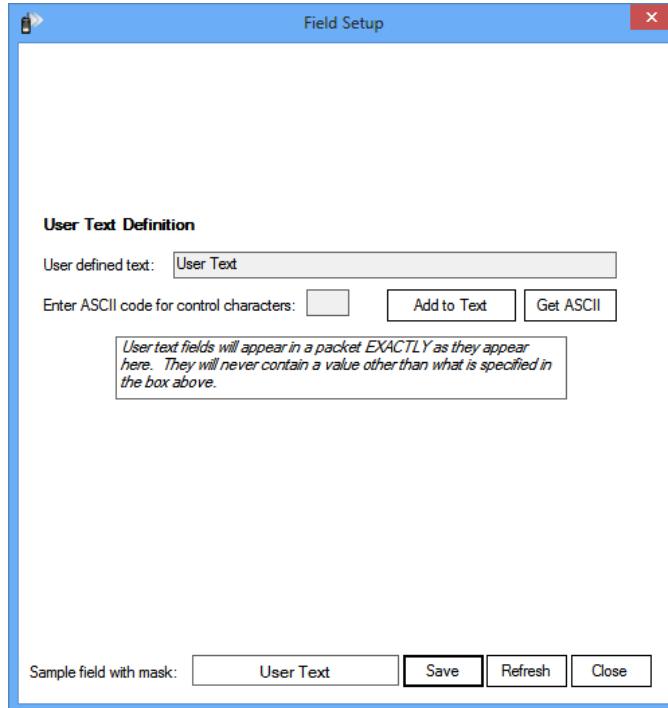
To remove a field from the **Selected Fields and Masks** list, click on it and drag it out of the **Selected Fields and Masks** list.



Certain fields will always be set to the default value depending on the information provided by your system. Use the GW\_Activity GUI's packet details view to ensure a field contains the value you wish to include in your output packet.

## Editing Selected Fields

Once you have selected your fields, you can edit their properties by double-clicking on them in the **Selected Fields and Masks** list. If the field you double-clicked is a **User Text** field, you will see the following window:



**Figure 2.3** – User Text Definition Window

Here you can enter static text that will be sent out as the value for this field every time the packet type for this output is received.

If you wish to add ASCII control characters to the text, enter the numeric value for them in the **ASCII control character** field and click **Add to Text**.

An example of the output can be seen at the bottom of the window.

If you double-click on a DateTime or Timestamp field, then you will see the following window:

**Date and/or time field:**  
Select date or time format for this field:   
 Send In UTC Time  
*A user defined Date/Time field will contain a time or date indicating the time when GenSPOut sent the packet on the connection.*

**General Settings**  
Default value:  Case:

**Prefix and Suffix**  
Prefix:  Suffix:

**Trim Settings**  
Trim  characters from the beginning of the field.  
Trim  characters from the end of the field.  
 Set maximum length Maximum length is  from the

**Pad Settings**  
Pad  side of field with  until field is  characters long.

**Replacements**  
Replace occurrences of:  with this text:   
 +  
 -

Sample field with mask:

**Figure 2.4** – Date and Time Field Window

Here you can select the format in which you would like the date or time to appear. You can also select to send the time in UTC if desired as well as the generic fields described below. An example of the output can be seen at the bottom of the window.



The following formats have fixed UTC settings:

- **LocalTime** – Always uses local time (non-UTC).
- **FileTime & FileTimeUTC** – 100-nanoseconds since Jan 1, 1601



If you double-click on any other field, then you will see the following window:

The screenshot shows a dialog box titled "ID setup" with a close button in the top right corner. The dialog is organized into several sections:

- General Settings:** "Default value:" is set to "0". "Case:" is set to "As Is" via a dropdown menu.
- Prefix and Suffix:** "Prefix:" and "Suffix:" are both empty text input fields.
- Trim Settings:** "Trim" is set to "0" characters from the beginning of the field. Another "Trim" is set to "0" characters from the end of the field. There is a checkbox for "Set maximum length" and a "Maximum length is" spinner set to "0" from the "from the" dropdown.
- Pad Settings:** "Pad" is set to a dropdown menu. There is a checkbox for "side of field with" and "until field is" is set to "0" characters long.
- Replacements:** "Replace occurrences of:" and "with this text:" are both empty text input fields. Below them are "+" and "-" buttons.

At the bottom of the dialog, there is a "Sample field with mask:" showing the value "123". To the right of the sample field are three buttons: "Save", "Refresh", and "Close".

**Figure 2.5** – Setup Window

Here you can format how the value will appear. You have the following options:

### **Default Value**

The value entered here will be passed on if no value is received for this field.

### **Case**

Here you can select whether you would like text received in this field to be passed on in upper case, lower case, or as it is received.

### **Prefix**

The value entered here will be added to the beginning of the value received before it is passed on.

### **Suffix**

The value entered here will be added to the end of the field before it is passed on.

### **Trim**

The number of characters to be removed from either the beginning or end of the value received.

## Set Maximum Length

By selecting this option, you can limit the size of the value in this field. Choose a maximum length and which side of the value you want to start counting from.



A given value of 123456789 with a maximum length of 5 from the right would equal 56789, and from the left would equal 12345.

## Pad

By entering values here, you can pad a character (typically '0') to the left or right side of the value until the field is a certain number of characters long.



For example, by selecting Left, entering a 0, and selecting 5, a value of 123 would become 00123.

## Replacements

This allows you to replace certain characters found in the received value with different characters. Enter the value you want replaced, what you want it replaced with, and click **Add to List**. To remove a replacement, select it in the list and click **Remove from List**. A typical use of this feature would be to replace all occurrences of "0" with "False", and all occurrences of "1" with "True."

As before, you can always see an example output using the mask you have created at the bottom of the window.

When you are done, click **Save**.



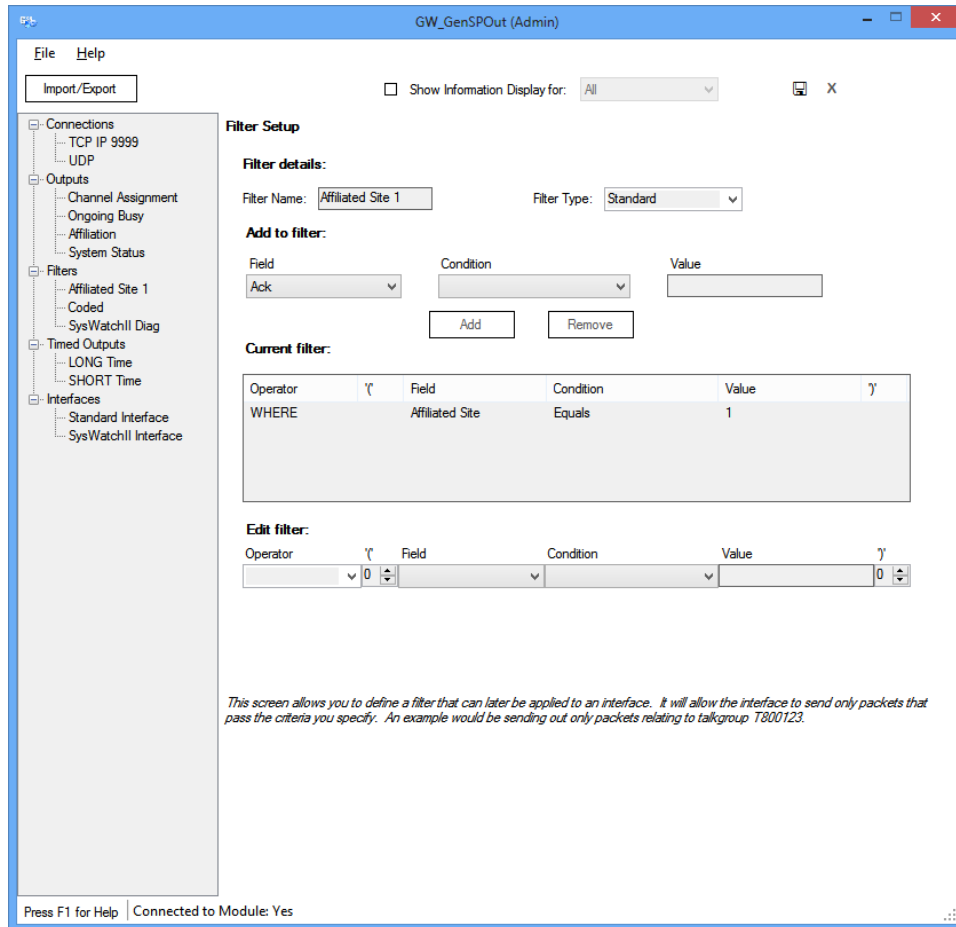
This will not save the output, only the field. To save the output you must click the **Save** button in the control bar.



The order of operations for formatting fields is as follows:

1. Trim Left
2. Trim Right
3. Max Length
4. Replacements
5. Pad Left
6. Pad Right
7. Prefix
8. Suffix
9. Case

## Filter Page



**Figure 2.6** – Standard Filter Page

Figure 2.6 shows the Filter Page. Adding a new filter or selecting an old one in the navigation tree will bring up this page.

You may enter a name by which you can refer to this filter in the future. As you change the name, you will see the change reflected in the navigation tree.

### What is a Filter?

A filter restricts what packets of information will be passed on by GW\_GenSPOut on any given **Interface** (this may apply to more than one **Output**).

## Adding Filter Items

Any field that can be received by GW\_GenSPOut will be available to be selected as a field to filter by (even though it may not be receivable, given the outputs selected for an interface). Select one of these fields, select a condition (Equals, Less than, Greater than, etc.), enter a value, and click **Add**.



Note that there is a limit of 10 filter items per filter. Once the maximum number of filter items has been added, the controls in the *Add to Filter* section will become disabled until an existing filter item is removed.

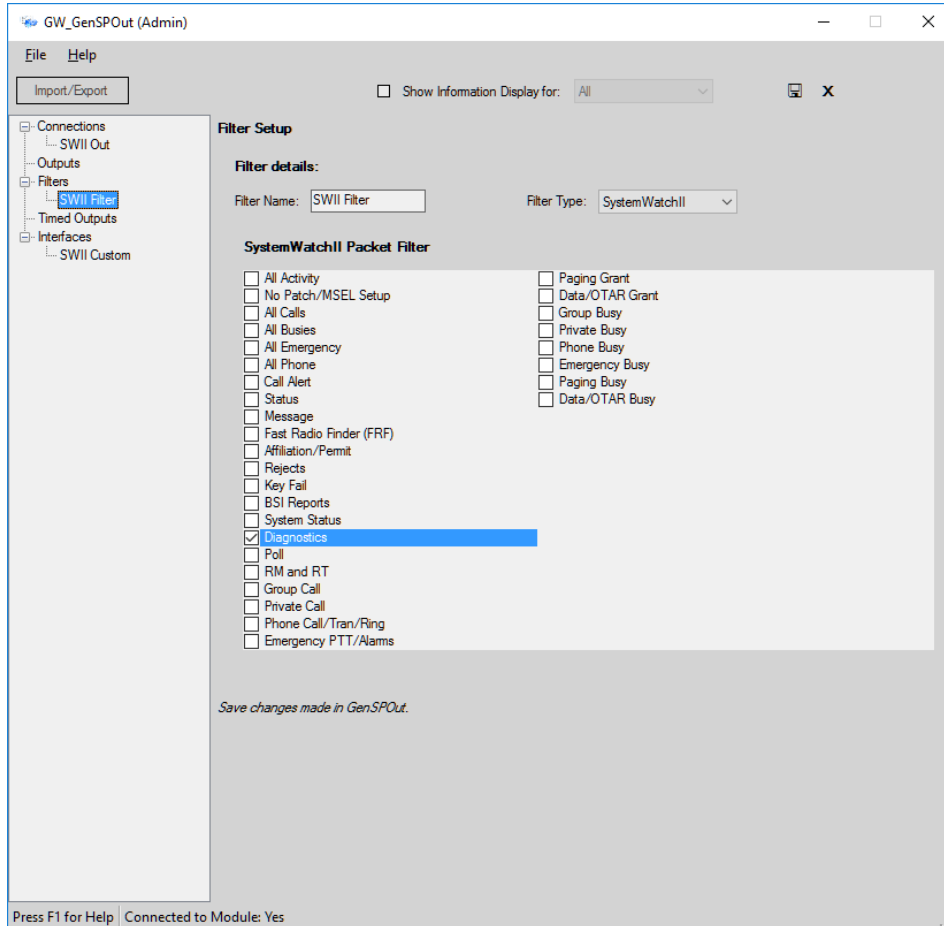
## Editing Filter Items

Click a filter item in the filter list to edit it in the area at the bottom of the page. Change the operator field to determine how filter items should relate to each other (And, Or, And not, Or not). The first filter item in the list must always be “Where” or “Where not.” Use the parentheses to correctly define the order of operations for the filter. Algebraic rules apply.

You can also click **Remove** to remove the selected filter item from the filter.

## SystemWatchII Filter

The SystemWatchII filter allows you to control which packets are sent out through a GenSPOut interface. This filter can only be applied to SystemWatchII interfaces.



**Figure 2.7** – SystemWatchII Filter Page

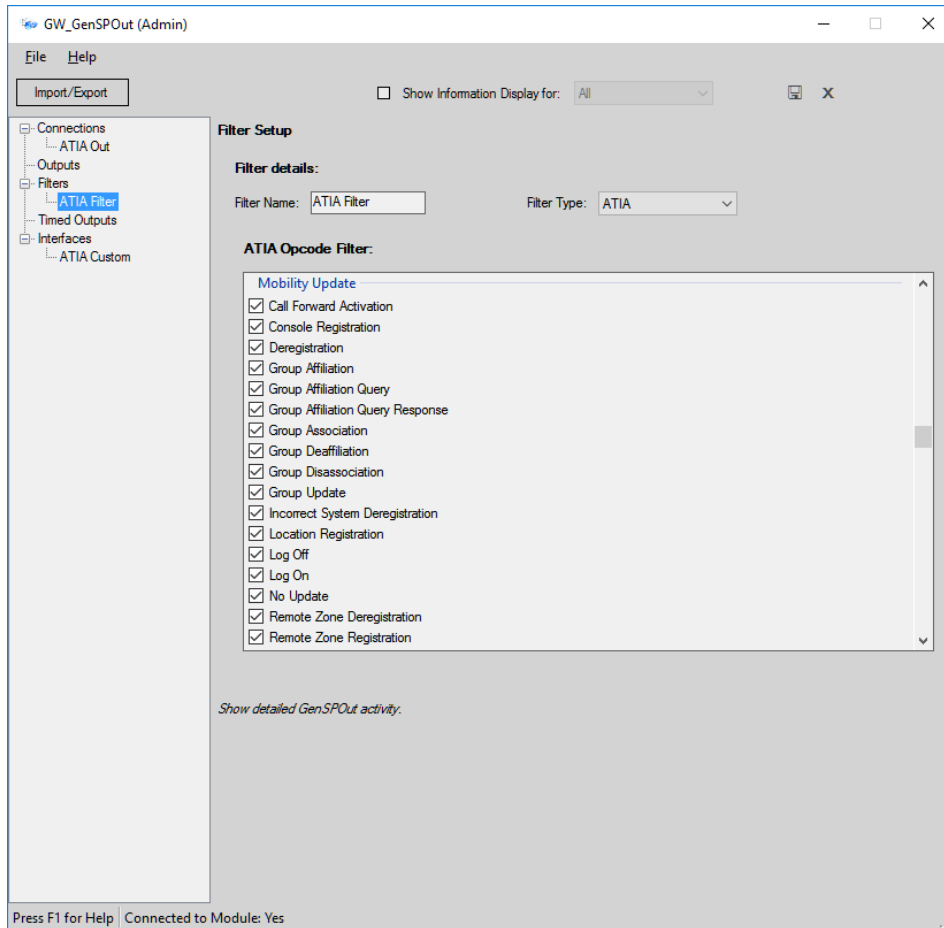
## ATIA Filter

The ATIA filter allows you to control which packets are sent out through a GenSPOut interface. This filter can only be applied to ATIA interfaces.

The ATIA Opcodes are grouped under their corresponding ATIA Command Type. These ATIA Command Types (preended with the word Flexible) are defined on pages 2-5 and 2-6 in the following Motorola document:

Flexible Air Traffic Information  
Access (ATIA) TID Manual  
Interface Release 1.151.0  
6802800U72-AV Released March 2019.

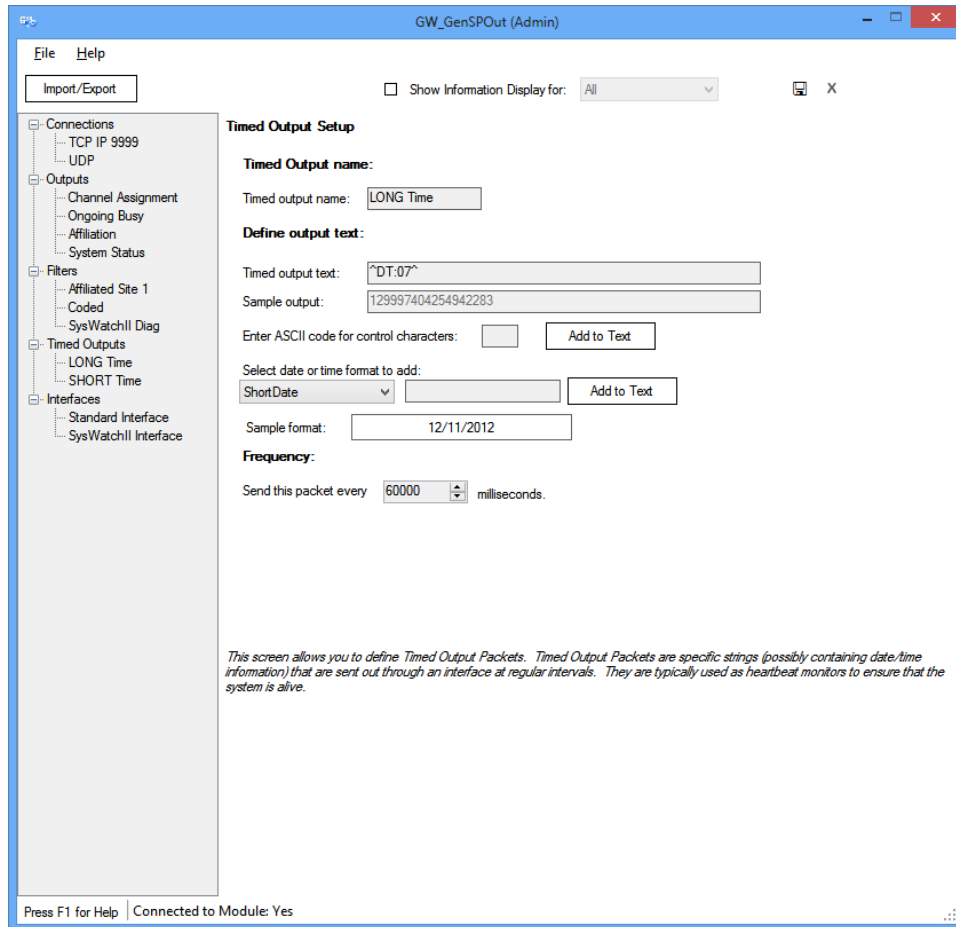
The ATIA Opcodes are described under their corresponding ATIA Command section within the same Motorola document.



**Figure 2.8** – ATIA Filter Page

ATIA Packets are sent via the ATIA custom output interface. See the *Interface Page* section of this document for more information.

## Timed Output Page



**Figure 2.9** – Timed Output Page

Figure 2.9 shows the Timed Output Page. Adding a new timed output or selecting an existing one in the navigation tree will bring up this page.

You may enter a name by which you can refer to this timed output in the future. As you change the name, you will see the change reflected in the navigation tree.

### What is a Timed Output?

A timed output is a defined string of text that is sent out at specified intervals by GW\_GenSPOut that may or may not contain the current date and/or time in a specified format. This feature is typically used as a heartbeat monitor to assure a client that the GW\_GenSPOut module is still connected.

To add control characters to the text, enter the numeric value of the code in the ASCII field and click **Add to Text**.

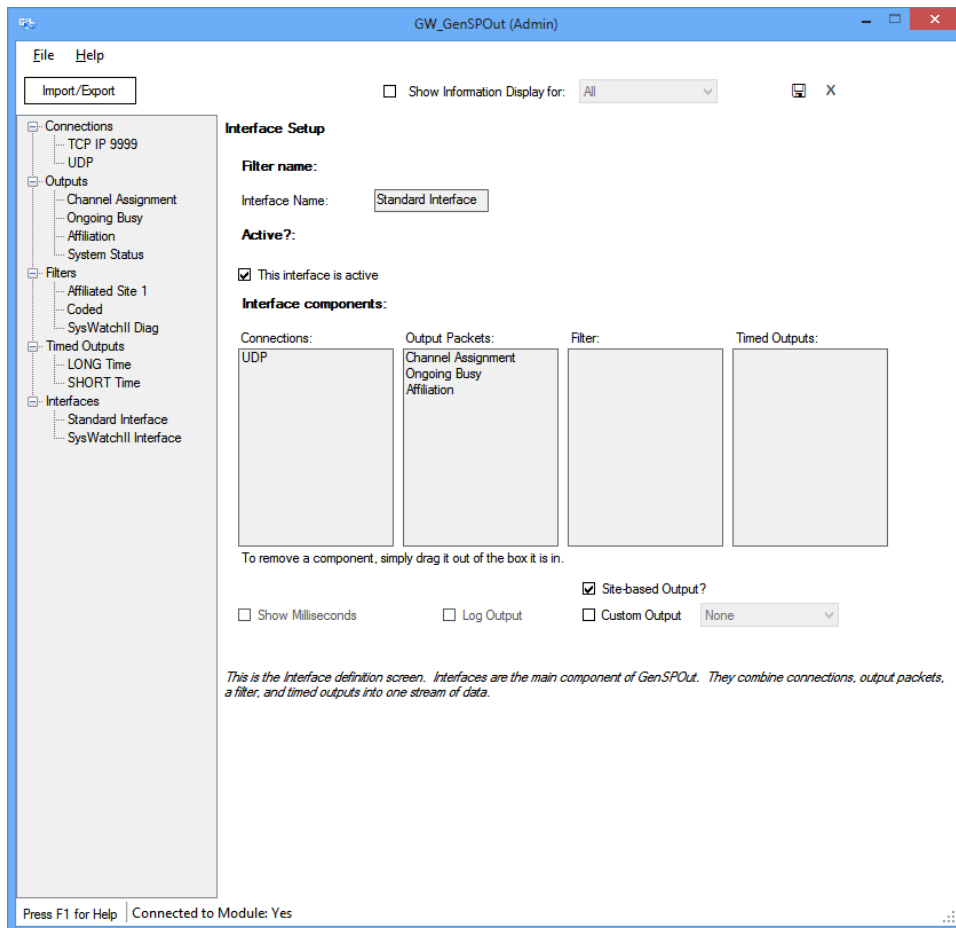
If invalid characters are entered into the textbox, GW\_GenSPOut will remove the invalid characters as you type. In this case, you will see the following message:

*This textbox contained invalid characters. These characters were removed.*

To add a date and/or time to the text, select a date/time format from the list and click **Add to Text**.

To change the frequency at which this packet will be sent, change the value in the *Frequency* section to the number of milliseconds by which you wish the packets to be separated.

## Interface Page



**Figure 2.10** – Interface Page

Figure 2.10 shows the Interface Page. Adding a new interface or selecting an existing one in the navigation tree will bring up this page.

You may enter a name by which you can refer to this interface in the future. As you change the name, you will see the change reflected in the navigation tree.



## What is an Interface?

An interface is the main component of GW\_GenSPOut. It ties each of the other components together into one stream of data.

## Building an Interface

To build the interface:

1. Drag one or more connections from the tree into the **Connections** box. Packets received on this interface will be sent to all connections in this box.
2. Drag one or more outputs from the tree into the **Outputs** box. This interface will process any incoming packets that correspond to any of the outputs in this box.
3. Drag a filter from the tree into the **Filter** box. You may only select ONE filter here, and it will apply to the entire interface (all outputs).
4. Drag one or more timed outputs from the tree into the **Timed Outputs** box. Any timed outputs in this box will be sent out on all outputs assigned to this interface.

To make an interface active and operational, check the **This interface is active** box. Unchecking this is an easy way to temporarily deactivate an interface without losing its settings.



To remove an item from one of the boxes, click and drag it out of the box. When dragging items from the tree, click-and-drag them; do not click then click-and-drag them.

**Site-based Output?:** This option sends a site-specific data packet for each site involved in an output. This option applies only to multisite data.

**Custom Output:** This option allows you to choose a custom output. This selection causes the output to emulate the selected custom output type. In this version SystemWatchII and ATIA are available.

### SystemWatchII Custom Output

SystemWatchII emulates the SystemWatchII system activity output.

### ATIA Custom Output

ATIA sends out a delimited field name and field value list. See the *ATIA Custom Output Description* section below for details.

Make sure to click **Save** in the control bar after finishing your settings so that all your changes will be saved to the database.

This completes the setup of a GW\_GenSPOut interface. Repeat this process for each set of outputs. Data should start streaming out of the connections you

established (frequency will vary depending on filter) if the module is started and GenWatch3 is connected to a source of data.

## ATIA Custom Output Description

The ATIA Custom output sends packets in the following format:

FieldName1{Unit Separator}FieldName2{Unit separator}...FieldNameN{Group Separator}FieldValue1{Unit Separator}FieldValue2{Unit separator}...FieldValueN{Carriage Return+New Line} where:

- {Unit Separator} = ASCII character 0x1F
- {Group Separator} = ASCII character 0x1D
- {Carriage Return + New Line} = ASCII characters 0x0D 0x0A

Each ATIA Opcode provides a distinct list of FieldNames and FieldValues. FieldNames and FieldValues include fields defined in the ATIA protocol and fields added to the packet during GenWatch3 processing.

Note: Although they are described in the Motorola document, the following ATIA Command Types are not available in the GenSPOut Custom ATIA interface:

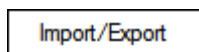
- ControllingZoneUpdate
- ConventionalControllingZoneUpdate

## Importing and Exporting

It is possible to import and export settings to and from installations of GenWatch3.

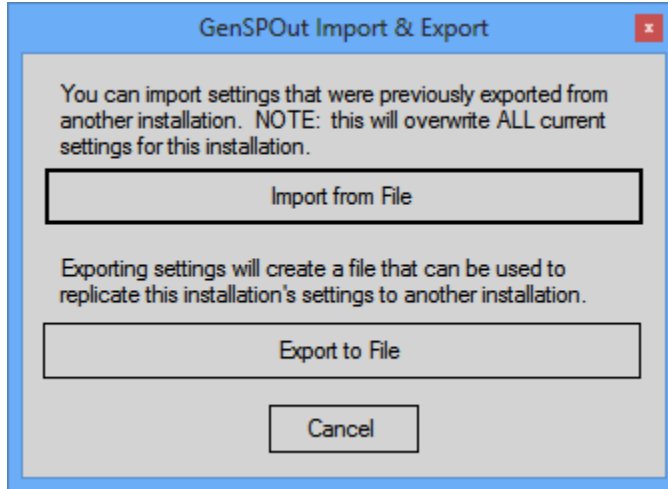
### Exporting

To export settings that you have configured in GW\_GenSPOut, click on the **Import/Export** button at the top-left of the window.



**Figure 2.11 – Import/Export button**

This will bring up the *GenSPOut Import & Export* window:



**Figure 2.12** – GenSPOut Import & Export window

Click on the **Export to File** button. This will prompt you for a location and name for the export file. When you have specified the name and location, the export will immediately proceed and prompt you when it is done. The resulting file can then be imported into another GW\_GenSPOut installation.

## Importing

To import settings that were previously exported to a file, click on the **Import/Export** button at the top left of the GUI (Figure 2.11). This will bring up the same *GenSPOut Import & Export* dialog shown above. Next, click on the **Import from File** button.

You will be prompted for the file that you want to import. Browse to the file that you previously exported and select it. The import will proceed immediately after you select a file. You will be notified when the import is complete, and you will notice that your settings are updated.



The import process will **OVERWRITE** any settings you currently have configured in GenSPOut. It is recommended that you perform an export prior to adding any additional settings to an installation.



SystemWatchII filters from version 2.3 or earlier are not valid in the current version and will be removed after an import has completed.