



**GW3-TRBO®**  
**Connect Quickstart Guide**  
**Software Version 2.16.4**

---

***GW3-TRBO®***

600-2.16.4-TT.1  
4/5/2019



## Trademarks

The following are trademarks of Motorola: MOTOTRBO™.

Any other brand or product names are trademarks or registered trademarks of their respective holders.

## The Genesis Group Trademark Information

GW3-TRBO® is a registered trademark of GenCore Candeo, LTD., a subsidiary of Burks GenCore Co., Inc. D.B.A. The Genesis Group and Phil Burks.

## Copyright

Copyright © 2011-2019; Burks GenCore Co., Inc. D.B.A. The Genesis Group and Phil Burks. All rights are reserved. No part of this publication or the associated program may be reproduced, transmitted, transcribed, in whole or in part, in any form or by any means, whether it is mechanical, magnetic, optical, electronic, manual or otherwise, without the prior written consent of Burks GenCore Co., Inc. D.B.A:

The Genesis Group and Phil Burks  
5800 Eagles Nest Blvd  
Tyler, Texas 75703.

Includes technology licensed from Motorola.

## Disclaimer

The GW3-TRBO Quickstart Guide is printed in the U.S.A. Burks GenCore Co., Inc. D.B.A. The Genesis Group and Phil Burks believe that the information included in this manual is correct; however, Burks GenCore Co., Inc. D.B.A. The Genesis Group and Phil Burks reserves the right to alter, revise and make periodic changes to the manual and its contents. Burks GenCore Co., Inc. D.B.A. The Genesis Group does not assume responsibility to notify any person of such revisions or changes. While we have taken strides to carefully examine our software and documentation and believe that it is reliable, the Genesis Group and Phil Burks assume no responsibility for the use of the manual, or GW3-TRBO software, nor for any patent infringements or other rights of third parties who may use the manual or the GW3-TRBO software. Burks GenCore Co., Inc. D.B.A. The Genesis Group and Phil Burks make no representations or warranties with respect to the contents or fitness for a particular purpose beyond the cost of the software paid by the end-user.

The software contains valuable trade secrets and proprietary information. Unauthorized use of the manual or software can result in civil damages and criminal prosecution. As an end user, you agree to abide by and heed these statements.

## License

Title to the media on which the program is recorded and to the documentation in support of the product is transferred to you, but title to the program, and all subsequent copies of the program, despite the form or media in or on license is not a sale of the original or any subsequent copy. You assume responsibility for the selection of the program to achieve your intended results, and for the installation, use, and results obtained from the program.

Refer to the GW3-TRBO Manual Overview for your full license. All license information contained on pages 4-7 (Book 600-2.16.4-AA.1) are to be considered as contained herein.

## Support

Customer satisfaction is our number one priority at Genesis. We are here to provide you with the best software possible, and we want to know when you have any questions, concerns or problems with GW3-TRBO so that we can make it a better product for everyone.

Refer to the *Troubleshooting & Support* section of the GW3-TRBO Manual Shell (Book 600-2.16.4-AA.1) for complete support and contact information.

## ***Document History***

<b>Revision</b>	<b>Description</b>	<b>Author</b>
2.5	Initial Release	ATG
2.6	Revisions Before Release	CWF
2.7	Revisions Before Release	REB
2.8	Revisions Before Release	ATG
2.9	Revisions Before Release	REB
2.10	Revisions Before Release	REB
2.11	Conversion to docx	BCY
2.11	Changed references to “XRT 9000” to “gateway.”	REB
2.12	Revisions before release	REB
2.13	Revisions before release	ATG
2.14	Revisions before release	JAW
2.15	Revisions Before Release	REB
2.16	Revisions Before Release	JPS

# Table of Contents

---

<i>Trademarks</i> .....	3
<i>The Genesis Group Trademark Information</i> .....	3
<i>Copyright</i> .....	3
<i>Disclaimer</i> .....	3
<i>License</i> .....	3
<i>Support</i> .....	3
DOCUMENT HISTORY .....	4
<b>TABLE OF CONTENTS</b> .....	<b>5</b>
<b>ABOUT THIS MANUAL</b> .....	<b>7</b>
GOALS .....	7
WHO SHOULD READ THIS MANUAL? .....	7
HOW THIS MANUAL IS ORGANIZED .....	7
<b>CHAPTER 1 CONFIGURING THE CONNECT MODULE</b> .....	<b>9</b>
WHAT IS CONNECT? .....	9
LOADING THE CONNECT GUI .....	9
ADDING CONNECT CONNECTIONS .....	10
<i>Connection Settings</i> .....	10
Basic .....	10
Gateway Settings.....	10
Gateway User Settings .....	10
Radio Command Settings.....	11
System.....	11
Timeout Settings .....	11



### Goals

This document guides you through the GW3-TRBO Connect setup process. After you complete the steps in this document, your GW3-TRBO installation will be configured to receive data from your Connect Plus Network.

### Who Should Read This Manual?



This document is written for an audience with an understanding of computer and network administration. Specifically, it is for those who will GW3-TRBO with a Connect Plus input source.

### How This Manual Is Organized

This manual is organized as follows:

- **Configuring the Connect Module:** Instructions on setting up a connection to a Connect Plus Network.

This manual contains the following images, used to indicate that a segment of text requires special attention:

-  **Additional Information:** Addition information is used to indicate shortcuts or tips.
-  **Warning:** Warnings are used to indicate possible problem areas, such as a risk of data loss, or incorrect/unexpected functionality.





## What is Connect?

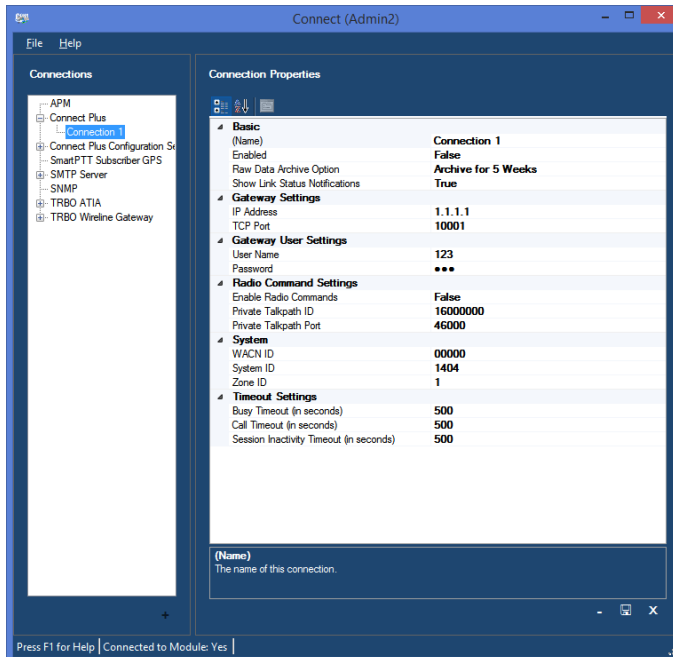
The Connect GUI (Graphical User Interface) shows the current configuration of each of your Connect module connection(s).

The number of connections you are allowed to create within the Connect module is limited by your license. Please contact GW3-TRBO Support with questions regarding licensing for additional connections.

## Loading the Connect GUI

Launch the GUI for the Connect module by following the steps below:

1. Start Launch (see GW3-TRBO Core manual).
2. Locate the Connect module icon in the **Modules** list.
3. Double-click the Connect icon. This will load the Connect GUI.



**Figure 1.1** – Connect GUI

## Adding Connect Connections

When the GW3-TRBO application is installed, no connections exist. You must create a connection to receive Connect Plus data. To create a new connection, follow the steps below:

1. Click the **Add** button towards the bottom left of the GUI to create a new connection.
2. Change the properties in the **Connection Settings**.
3. Click the **Update** button to store the new connection.



This quickstart guide only details how to set up a Connect Plus connection. If you need information about setting up other types of connections, see the GW3-TRBO Connect book (600-2.16.4-MM.1).

## Connection Settings

In this section, enter the following settings for the Connect Plus Network.

### Basic

- **(Name):** Alias of this connection.
- **Enabled:** Indicates whether this connection is enabled.
  - *True:* Connection is enabled.
  - *False:* Connection is not enabled.
- **Raw Data Archive Option:** The Connect module can log all raw data received from a connection. This option determines how long this data is stored. Options include:
  - *DoNotArchive:* Do not log raw data.
  - *ArchiveForOneWeek:* Keep raw data for one week.
  - *ArchiveForTwoWeeks:* Keep raw data for two weeks.
  - *ArchiveForFiveWeeks:* Keep raw data for five weeks.
- **Show Link Status Notifications:** Indicates whether the user will receive GUI notifications when the connection's link status goes up or down.
  - *True:* Send notifications.
  - *False:* Do not send notifications.

### Gateway Settings

- **IP Address:** The IP address of the gateway.
- **TCP Port:** The TCP port used to connect to the gateway.

### Gateway User Settings

- **User Name:** The login name for the user logging into the gateway.
- **Password:** The password for the user logging into the gateway.

## Radio Command Settings

- **Enable Radio Commands:** Specifies whether the connection is able to send Selective Inhibit (Radio Disable), Cancel Selective Inhibit (Radio Enable) and Radio Check commands. Enabling commands requires the gateway user to be allotted at least one talkpath.
- **Private Talkpath ID:** The ID of the talkpath registered to the gateway user. This talkpath ID will be used to send radio commands.
- **Private Talkpath Port:** The UDP port on which radio commands will be sent from the Connect module to the gateway.

## System

- **WACN ID:** The licensed WACN associated with this connection.
- **System ID:** The system associated with this connection. The system corresponds to the Connect Plus network ID provided by Motorola. If the system ID format is set to hexadecimal in the Launch GUI, this value will be presented in hexadecimal.
- **Zone ID:** The licensed Zone ID associated with this connection.

## Timeout Settings

The Connect module relies upon receiving data from the gateway over the network. If Connect does not receive a notification about the end of an activity, that activity can appear to be never-ending in GW3-TRBO. To compensate for this, several optional timeout features may be configured:

- **Busy Timeout (in seconds):** Busies will be timed out after the specified number of seconds. Set this to 0 to never end busies due to a timeout.
- **Call Timeout (in seconds):** Calls will be timed out after the specified number of seconds. Set this to 0 to never end calls due to a timeout. If enabled, this field should always be set at least a few seconds higher than the **Time-Out Timer (TOT)** value in your radio or repeater programming.
- **Session Inactivity Timeout (in seconds):** Sessions will be timed out after being inactive for the specified number of seconds. Set this to 0 to never end sessions due to a timeout. The inactivity timer begins when a channel assignment or busy on that session ends, and it is reset by a new channel assignment on the session. When enabled, this field must always be set to a value greater than the highest possible hang time in your repeater programming.



Using the timeout features can result in invalid data. The timeout values should be carefully considered to ensure that normal activities are not being ended prematurely. For example, if the **Call Timeout** field is set to 30 seconds, any call longer than 30 seconds will appear to end after 30 seconds in GW3-TRBO.



The Connect module only monitors call activity for Connect Plus connections. To monitor repeater alarms, you must also set up a connection for each site in the Trbo module. See the GW3-TRBO Trbo book (600-2.16.4-LL.1) for more information.

To check the status of a connection look to the task bar (usually located at the bottom right of the screen) to find a connection icon. The icon is a radio that will either be flashing Green for connected, Red for disconnected, or White if there is a connection error. A user can hover the mouse over these icons to get additional information concerning the connection.