



**GW3-TRBO®**  
**SysVista**  
**Software Version 2.17.4**  
**Module Book**

---

***GW3-TRBO***®

600-2.17.4-O.1  
2/11/2021



## Trademarks

The following are trademarks of Motorola: MOTOTRBO™.

Any other brand or product names are trademarks or registered trademarks of their respective holders.

## The Genesis Group Trademark Information

GW3-TRBO® is a registered trademark of GenCore Candeo, LTD., a subsidiary of Burks GenCore Co., Inc. D.B.A. The Genesis Group and Phil Burks.

## Copyright

Copyright © 2011-2021; Burks GenCore Co., Inc. D.B.A. The Genesis Group and Phil Burks. All rights are reserved. No part of this publication or the associated program may be reproduced, transmitted, transcribed, in whole or in part, in any form or by any means, whether it is mechanical, magnetic, optical, electronic, manual or otherwise, without the prior written consent of Burks GenCore Co., Inc. D.B.A:

The Genesis Group and Phil Burks  
5800 Eagles Nest Blvd  
Tyler, Texas 75703.

Includes technology licensed from Motorola.

## Disclaimer

The GW3-TRBO User's Manual is printed in the U.S.A. Burks GenCore Co., Inc. D.B.A. The Genesis Group and Phil Burks believe that the information included in this manual is correct; however, Burks GenCore Co., Inc. D.B.A. The Genesis Group and Phil Burks reserves the right to alter, revise and make periodic changes to the manual and its contents. Burks GenCore Co., Inc. D.B.A. The Genesis Group does not assume responsibility to notify any person of such revisions or changes. While we have taken strides to carefully examine our software and documentation and believe that it is reliable, the Genesis Group and Phil Burks assume no responsibility for the use of the manual, or GW3-TRBO software, nor for any patent infringements or other rights of third parties who may use the manual or the GW3-TRBO software. Burks GenCore Co., Inc. D.B.A. The Genesis Group and Phil Burks make no representations or warranties with respect to the contents or fitness for a particular purpose beyond the cost of the software paid by the end-user.

The software contains valuable trade secrets and proprietary information. Unauthorized use of the manual or software can result in civil damages and criminal prosecution. As an end user, you agree to abide by and heed these statements.

## License

Title to the media on which the program is recorded and to the documentation in support of the product is transferred to you, but title to the program, and all subsequent copies of the program, despite the form or media in or on license is not a sale of the original or any subsequent copy. You assume responsibility for the selection of the program to achieve your intended results, and for the installation, use, and results obtained from the program.

Refer to the GW3-TRBO Manual Overview for your full license. All license information contained on pages 4-7 (Book 600-2.17.4-AA.1) are to be considered as contained herein.

## Support

Customer satisfaction is our number one priority at Genesis. We are here to provide you with the best software possible and we want to know when you have any questions, concerns or problems with GW3-TRBO so that we can make it better product for everyone.

Refer to the *Troubleshooting & Support* section of the GW3-TRBO Manual Shell (Book 600-2.17.4-AA.1) for complete support and contact information.

## ***Document History***

<b>Revision</b>	<b>Description</b>	<b>Author</b>
2.4.0	Initial release	REB
2.5	Revisions Before Release	CWF
2.6	Revisions Before Release	CWF
2.8	Revisions Before Release	WRK
2.9	Revisions Before Release	REB
2.10	Revisions Before Release	REB
2.11	Conversion to docx	BCY
2.12	Revisions Before Release	JAW
2.13	Revisions Before Release	ATG
2.14	Revisions Before Release	JAW
2.15	Revisions Before Release	REB
2.16	Revisions Before Release	JPS
2.17	Presence Packets	DEW

# Table of Contents

<i>Trademarks</i> .....	3
<i>The Genesis Group Trademark Information</i> .....	3
<i>Copyright</i> .....	3
<i>Disclaimer</i> .....	3
<i>License</i> .....	3
<i>Support</i> .....	3
DOCUMENT HISTORY .....	4
<b>TABLE OF CONTENTS</b> .....	<b>5</b>
<b>ABOUT THIS MANUAL</b> .....	<b>7</b>
GOALS .....	7
WHO SHOULD READ THIS MANUAL? .....	7
HOW THIS MANUAL IS ORGANIZED .....	7
<b>CHAPTER 1 OVERVIEW</b> .....	<b>9</b>
SYSVISTA TERMS .....	9
WHAT IS SYSVISTA? .....	10
RESOURCE OPTIONS .....	11
CONNECTION OPTIONS .....	12
IGNORE CONSOLES .....	13
STATISTICS .....	13
USAGE OVERVIEW .....	14
INTERVAL OPTIONS .....	15
SYSVISTA ALERTS.....	16
VIEW OPTIONS .....	17
<i>Dashboard</i> .....	17
<i>Multi-View</i> .....	17
Multi-View Banner .....	18
Adding a Dial.....	19
Updating a Dial.....	20
Removing a Dial .....	20
Toggling a Dial to Number Only view.....	20
<b>CHAPTER 2 KEY PERFORMANCE INDICATORS (KPIs)</b> .....	<b>21</b>
WHAT ARE KPIs?.....	21
KPI STORAGE AND AVAILABILITY .....	21
KPI TABLE DEFINITIONS .....	22
<i>KpiSysVistaSystems</i> .....	22
<i>KpiSysVistaZones</i> .....	23
<i>KpiSysVistaSites</i> .....	24
KPI VIEW DEFINITIONS.....	25
<i>Kpi.SysVista.Systems</i> .....	25
<i>Kpi.SysVista.Zones</i> .....	26
<i>Kpi.SysVista.Sites</i> .....	27
KPI OPTIONS .....	28
Option Definitions.....	28
SETTING KPI OPTIONS .....	29
<b>APPENDIX A</b> .....	<b>31</b>
RADIO ACTIVITIES.....	31
RADIO DISCONNECTED ACTIVITY .....	31



### Goals

This manual describes the role and function of the SysVista module in the GW3-TRBO solution.

### Who Should Read This Manual?



This manual is written for the intended audience of novice to mid-level MOTOTRBO radio system users and novice to mid-level PC users.

### How This Manual Is Organized

This manual is organized as follows:

- **Overview:** Describes the SysVista module and SysVista graphical user interface (GUI).

This manual contains the following images, used to indicate that a segment of text requires special attention:

-  **Additional Information:** Additional information is used to indicate shortcuts or tips.
-  **Warning:** Warnings are used to indicate possible problem areas, such as a risk of data loss or incorrect/unexpected functionality.





This chapter describes the SysVista module and SysVista GUI (graphical user interface).

This chapter contains the following sections:

- **SysVista Terms:** Defines some crucial terms used in SysVista.
- **What is SysVista?:** Describes the purpose of SysVista.
- **Resource Options:** Describes the resources used in SysVista.
- **Connection Options:** Describes the options for defining a connection activity.
- **Statistics:** Describes the statistics displayed in SysVista.
- **Interval Options:** Describes the interval options available in SysVista.
- **SysVista Alert:** Describes the alert feature of SysVista.
- **View Options:** Describes the view options available in SysVista.

## SysVista Terms

The following terms are used in SysVista. In order to understand the information shown in SysVista, you must understand these terms:

- **Calls:** In general terms, this is a conversation. A call can be:
  - **Group-based:** All radios affiliated to the target group hear the conversation and can key up and speak in the conversation.
  - **Private:** Radio to radio.
- **PTTs:** Calls can contain multiple PTTs. PTTs occur in a call when something about the call changes. Changes can include:
  - The radio speaking in the call.
  - Sites added and removed as radios included in the call roam between sites.
- **Radio Activity:** This is activity that originates from the radio. See the *Radio Activities* section of *Appendix A* for a list of radio activities.
- **Connections:** A connection occurs when a radio becomes known to SysVista. This process is described in the *Connection Options* section below.

## What is SysVista?

SysVista is a real-time, interactive statistical reporting interface. The SysVista module receives packets from each GW3-TRBO input connection. SysVista then compiles these packets into statistics. The SysVista GUI (Figure 1.1) displays these statistics for the selected time period and resource(s).

By design, the SysVista *View* window shows you easy-to-read, high-level information about your system(s). The large analog dials and straightforward options make SysVista easy to read and understand. SysVista is *the* dashboard for your radio system(s).



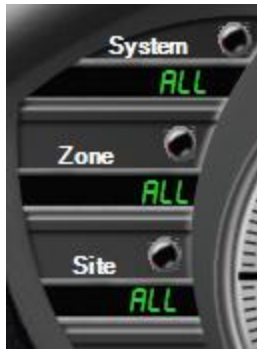
**Figure 1.1** – SysVista View Window

## Resource Options

Resources are the systems, zones and sites monitored by GW3-TRBO. All systems have a system ID and at least one site, but not all systems have a zone (such as single-site systems). For these systems, the zone acts as a placeholder to give them the same organization as multisite systems.

Behind the scenes, SysVista gathers statistics specific to each of these resources. SysVista then allows you to filter your statistics, by choosing a resource:

- **Systems:** Select **ALL** for all systems. Choose a specific system ID to view statistics for the selected system ID and to allow selection for a specific zone.
- **Zone:** Select **ALL** for all zones under the selected system. Choose a specific zone to view statistics for the selected zone under the selected system and to allow selection for a specific site ID.
- **Sites:** Select **ALL** for all site IDs under the selected zone for the selected system. Choose a specific site ID to view statistics for the selected site ID under the selected zone. SysVista ignores activity from console “sites” with a site ID of zero.



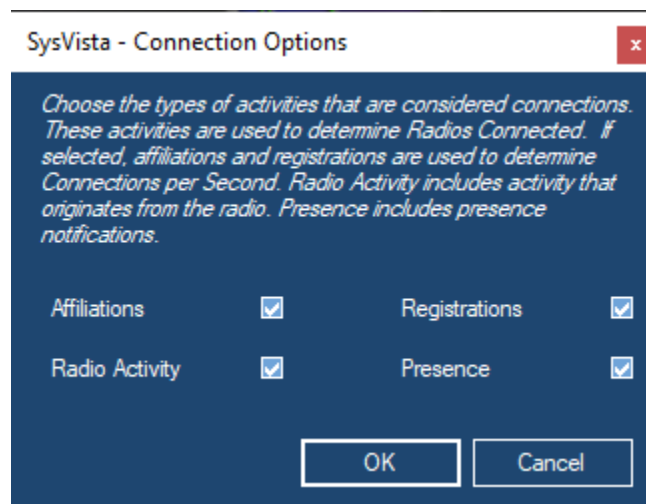
**Figure 1.2** – Dashboard Resource Selection

## Connection Options

A connection occurs when a radio becomes known to SysVista. A connection is the result of one of the following activities:

- Affiliations
- Registrations
- Radio Activity (See the *Radio Activities* section of *Appendix A* for a list of radio activities)
- Presence: Present

Connections are used to determine the **Radios Connected** and **Connections per Second** statistics. The **Connections per Second** statistic does not include radio activity or presence.



**Figure 1.3** – Connection Options Window

A radio is counted in the **Radios Connected** value if its most recent activity is one of the following and its corresponding option is checked in the *Connection Options* window.

- Affiliation
- Registration
- Radio Activity
- Presence: Present

A radio is **not** counted in the **Radios Connected** value if its most recent activity is one of the following and its corresponding option is checked in the *Connection Options* window.

- Deaffiliation
- Presence: Absent

These options are saved to your GW3-TRBO user profile and are restored when you open the SysVista GUI.



Radio IDs in the inclusive ranges 16,776,352 to 16,776,415 and 16,776,896 to 16,777,215 will be ignored and not displayed in this module. These IDs are reserved for use in some MOTOTRBO system types.

## Ignore Consoles

Option to not consider Consoles in connected radios statistics.

## Statistics

SysVista tracks the following statistics:

- **Total Calls:** Total number of *Calls* (for multisite input) or *PTTs* (for single-site input) initiated (started) on all selected resources within the selected time period. For multisite systems, a call might initiate on multiple sites. For this reason, the sum of **Total Calls** for each site in a zone may be greater than the **Total Calls** for the site's zone or system. In the Dashboard view this statistic does not provide an analog dial.
- **Connections per Second\* (Con./Sec. or Connections/Sec.):** Shows how many connections per second have been received among all selected resources within the selected time period. This is based on your connection options.
- **Calls per Second\* (Calls/Sec.):** Indicates how many **Calls** (for multisite input) or **PTTs** (for single-site input) per second have been active among all selected resources within the selected time period.
- **Radios Connected\*\*:** Shows how many radios are known to be connected within all selected resources. This is based on your connection options and the system's Radio ID Timeout Minutes setting in Alias. See the Alias module book for more information on this setting.
- **Calls in Progress\*\*:** Shows how many *Calls* (for multisite input) or *PTTs* (for single-site input) are known to be in progress among all selected resources.
- **Busies\*\*:** Shows how many busies are known to be in progress among all selected resources.



\*SysVista shows these values as decimal numbers, rounded to the nearest hundredth (0.01) where rounding away from zero is always used when the thousandth digit is a 5. For example, a value of 2.345 would be shown as 2.35. A value such as 1.234 would be shown as 1.23.

\*\*This value does not consider the selected time period.

Each analog dial (gray dial with red needle) contains a multiplier value (x1, x10, x100, etc.). The multiplier value indicates which multiple of 10 the analog dial represents. This multiplier does not apply to the digital value (green number in the black box) within the analog dial.

## Usage Overview

SysVista shows the following value in graphical format (graphical bar on the rightmost side of the SysVista GUI):

- **Usage Overview:** This bar is an estimate of your total system usage. System usage is calculated using the following formula:
  - *Unit Time / (Voice Slots x Period Time)* where:
    - **Unit Time** = Total unit airtime among the selected resource in the selected time period.
    - **Voice Slots** = Total voice slots among the selected resources. Each Channel in Alias has a **Channel Type** option. This option determines the channel's slots.
    - **Period Time** = Total time that has elapsed in the selected time period since the GW3-TRBO service started.



**Figure 1.4** – Usage Overview

Each segment in the **Usage Overview** bar represents about 10% system usage. When the system reaches 10% usage, the bottom bar will light up. When the system reaches 90% usage all bars will light up.



The **Usage Overview** determines the number of channels for a site by referencing the Alias database. If you feel your usage is too high or too low, please check the channels under the site or sites you are monitoring. Verify the following:

- The channels exist in Alias.
- Each voice channel is marked as **Voice Channel** in the **Channel Options** section of Alias.
- Each voice channel's correct **Channel Type** is selected in the **Channel Options** section of Alias.



The values in SysVista are cleared each time the GW3-TRBO service is stopped and each time the GW3-TRBO host machine is restarted. If you restart the GW3-TRBO host machine, the statistical values will need to rebuild over time to show entire daily, monthly, etc. values.

## Interval Options

An interval is the amount of time SysVista includes when showing the following values:

- Total Calls
- Con./Sec.
- Calls/Sec.

SysVista will show statistics for the selected time period. SysVista allows you to view system statistics for the following time periods:

- **Year:** Current Year\*. If the current date/time is 3/21/2021 3:34 PM, then the statistics will only include 1/1/2021 12:00 AM to 3/21/2021 3:34 PM. When the year changes, the values will clear.
- **Month:** Current Month\*. If the current date/time is 3/21/2021 3:34 PM, then the statistics will only include 3/1/2021 12:00 AM to 3/21/2021 3:34 PM. When the month changes, the values will clear.
- **Day:** Current Day\*. If the current date/time is 3/21/2021 3:34 PM, then the statistics will only include 3/21/2021 12:00 AM to 3/21/2021 3:34 PM. When the day changes, the values will clear.
- **Hour:** Current Hour\*. If the current date/time is 3/21/2021 3:34 PM, then the statistics will only include 3/21/2021 3:00 PM to 3/21/2021 3:34 PM. When the hour changes, the values will clear.
- **30 Minutes:** Current 30 minutes\*. If the current date/time is 3/21/2021 3:29 PM, then the statistics will only include 3/21/2021 3:00 PM to 3/21/2021 3:29 PM. If the current date/time is 3/21/2021 3:43 PM, then the statistics will only include 3/21/2021 3:30 PM to 3/21/2021 3:43 PM. When the minute changes to 30 or 00, the values will clear.
- **15 Minutes:** Current 15 minutes\*. If the current date/time is 3/21/2021 3:29 PM, then the statistics will only include 3/21/2021 3:15 PM to 3/21/2021 3:29 PM. When the minute changes to 15, 30, 45 or 00, the values will clear.
- **5 Minutes:** Current 5 minutes\*. If the current date/time is 3/21/2021 3:29 PM, then the statistics will only include 3/21/2021 3:25 PM to 3/21/2021 3:29 PM. When the minute changes to 5, 10, 15, 20, 25, 30, 35, 40, 45, 50, 55 or 00, the values will clear.



\* The current minute, hour, day, month, or year refers to the current system time of the GW3-TRBO host machine.



Figure 1.5 – Dashboard Interval Selection

Interval ▾ 5 Minutes

Figure 1.6 – Multi-View Interval Selection

## **SysVista Alerts**

SysVista activates (lights up) its Alert light when it receives an interface board related diagnostic within its selected resources. Click on the Alert light to acknowledge (deactivate) this alert. Deactivating the Alert light will notify all other active SysVista windows that the alert was acknowledged.



**Figure 1.7** – SysVista Alert Light (active)

These diagnostic alerts can then be investigated via other GW3-TRBO modules, such as Reports if you are archiving or Channel if you have Channel open when the alert occurs.



## View Options

SysVista offers two statistical views:

### Dashboard

This view shows all statistics (described in the Statistics section above) for the selected resource(s). The only options on this view are the interval and the resources.

### Multi-View

This view shows up to 20 customized dials. Each dial shows a statistic on the selected resource for the selected interval. You can add or remove dials at any time. The settings in this view are saved in your GW3-TRBO user's profile.

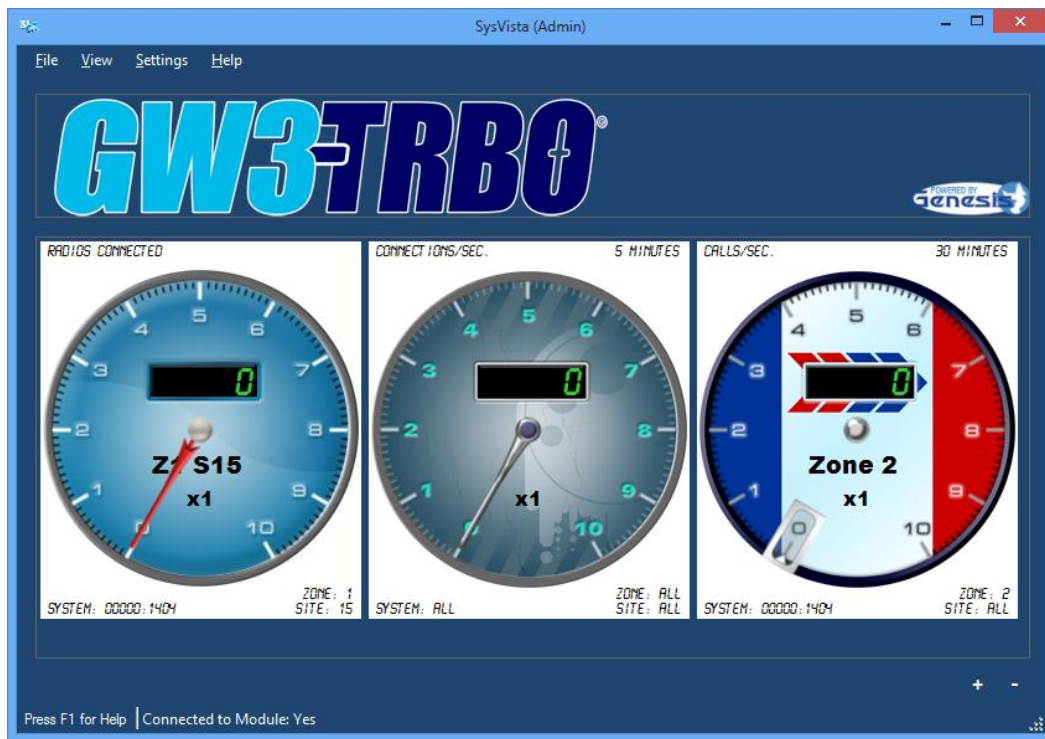


Figure 1.8 – Multi-View Window

## Multi-View Banner

Located at the top of the *Multi-View* windows is the *Banner*.



**Figure 1.9** – Multi-View Banner

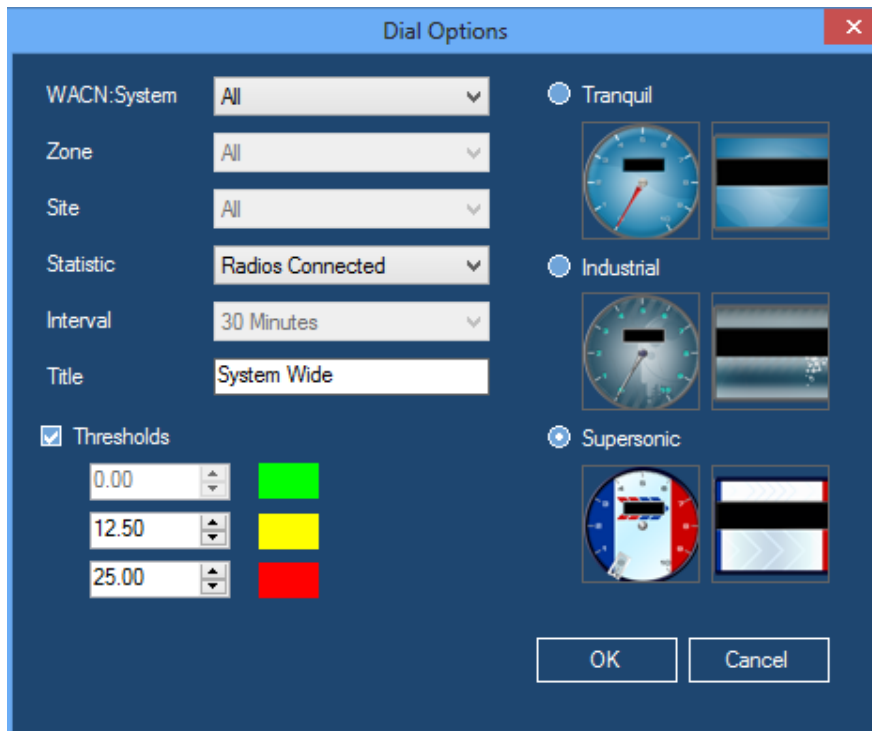
This banner can be hidden by unchecking the **Multi-View Banner** option located under **View** in the menu bar at the top. The picture for the banner can be changed with the following steps:

1. Create a jpeg graphic that is between 200 x 100 pixels and 2,000 x 1,000 pixels with 96 DPI.
2. Save the image as *Banner.jpg*.
3. Place the new file in the  
*C:\Program Data \Genesis\GenWatch3\Images\SysVista* folder

## Adding a Dial

To add a dial:

1. Click the **Add** button.
2. Select a **System**: For all systems, select **All**.
3. Select a **Zone**: For all zones, select **All** (you must select a system before you can select a Zone).
4. Select a **Site**: For all sites, select **All** (you must select a zone before you can select a Site).
5. Select a **Statistic**.
6. Select an **Interval**. Some statistics are not interval based and this option will be disabled for those.
7. Enter a **Title** for the dial (50 characters maximum).
8. Checking the **Thresholds** option will put a colored ring around the edge of the dial. This ring represents a percentage of the thresholds specified until the red threshold is met or exceeded. When the value of the dial meets or exceeds the specified threshold, this ring will turn the respective color.
9. Select a background for the dial. The background selection does not affect dial functionality.



**Figure 1.10** – Multi-View Dial Options Window

## Updating a Dial

To update a dial:

1. Select a dial by clicking on it: SysVista shows the dial outlined in blue.
2. Right-click the dial.
3. Select the **Properties...** option from the menu that appears.
4. Follow the steps from the *Adding a Dial* instructions above.

## Removing a Dial

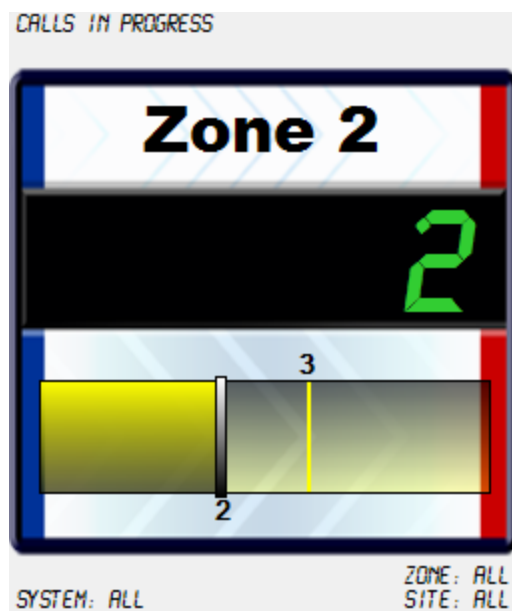
To remove a dial:

1. Select a dial by clicking on it: SysVista shows the dial outlined in blue.
2. Click the **Remove** button.

## toggling a Dial to Number Only view

To toggle Number Only view:

1. Select a dial by clicking on it: SysVista shows the dial outlined in blue.
2. Right-click the dial.
3. Select the **Number Only** option from the menu that appears.
4. To go back to Dial view repeat steps 1-3.



**Figure 1.11** – Multi-View Dial in Number Only view

This chapter describes SysVista's Key Performance Indicators (KPIs) feature.

This chapter contains the following sections:

- **What are KPIs?:** Provides a high-level overview of KPIs.
- **KPI Storage and Availability:** Describes where KPIs are stored and how KPI data is accessed.
- **KPI Table Definitions:** Provides a detailed description of each KPI table and its columns.
- **KPI View Definitions:** Provides a detailed description of each KPI table's view and its columns.
- **KPI Options:** Describes the available KPI feature options and how to set them.

### *What are KPIs?*

KPIs are statistical values, at each resource level, that are aggregated and stored on a specified interval. An example of a KPI is "Radios Currently Connected to Site 1 under Zone 1 under System A4A".

### *KPI Storage and Availability*

KPIs are stored in the following tables within the GW3-TRBO database:

- **KPISysVistaSystems:** KPIs aggregated to the system level.
- **KPISysVistaZones:** KPIs aggregated to the zone level.
- **KPISysVistaSites:** KPIs aggregated to the site level.

These tables are accessible via the following views in the GW3-TRBO database:

- **Kpi.SysVista.Systems:** Access to the KPISysVistaSystems table.
- **Kpi.SysVista.Zones:** Access to the KPISysVistaZones table.
- **Kpi.SysVista.Sites:** Access to the KPISysVistaSites table.



The following database structures include Interconnect fields even though Interconnect service is not supported in the current version of MOTOTRBO.

## KPI Table Definitions

### KpiSysVistaSystems

GW3-TRBO will store SysVista system KPIs in the following table structure. Each row in this table will represent the current set of SysVista KPIs for a system, qualified by WACN. Columns include:

- **WACNId:** System's WACN
- **SystemId:** System Id
- **RadiosConnected:** Radios currently connected to this system. These include radios that have issued affiliations, registrations, associations and other radio-based or acknowledged activity (PTTs, Statuses, Dynamic Regrouping Ack, etc.) within the number of minutes set in Alias for the system's Radio ID Timeout Minutes.
- **GroupCallsInProgress:** Group calls currently in progress on this system.
- **InterconnectCallsInProgress:** Interconnect calls currently in progress on this system.
- **PrivateCallsInProgress:** Private calls currently in progress on this system.
- **EmergencyCallsInProgress:** Emergency calls currently in progress on this system. NOTE: this value is a sub-category of group calls and is included in the *GroupCallsInProgress* value.
- **GroupVoicePathsInUse:** Voice paths (slots) currently in use for group calls on this system.
- **InterconnectVoicePathsInUse:** Voice paths (slots) currently in use for interconnect calls on this system.
- **PrivateVoicePathsInUse:** Voice paths (slots) currently in use for private calls on this system.
- **EmergencyVoicePathsInUse:** Voice paths (slots) currently in use for emergency group calls on this system. NOTE: this value is a sub-category of group calls and is included in the *GroupVoicePathsInUse* value.
- **AvailableVoicePaths:** Number of voice paths (slots) not in use on this system. This value is  $TotalVoicePaths - GroupVoicePathsInUse - InterconnectVoicePathsInUse - PrivateVoicePathsInUse$ .
- **TotalVoicePaths:** All voice paths (slots) on this system. NOTE: This value is derived from channel-level settings in the GW3-TRBO Alias database.
- **BusiesInQueue:** Busies currently in queue on this system.
- **ConnectionsPerSecond:** Connections per second on this system, within the current 5-minute interval. This is based on all radio-based activity types. These include affiliations, registrations, associations and other radio-based or acknowledged activity (PTTs, Statuses, Dynamic Regrouping Ack, etc.)
- **CallsPerSecond:** Start of Calls received per second on this system within the current 5-minute interval.
- **DT:** Date and Time these statistics were written.

**NOTE:** The current calls/second and connections/second will be taken from SysVista's 5-minute interval values. Every 5 minutes, this interval is reset and will show 0 for a few seconds, until the next call or connection is received. Example: If the first call is received 3 seconds into the new interval, we will show 0.333 calls/second.

## KpiSysVistaZones

Genesis will store existing SysVista zone KPIs in the following table structure. Each row in this table will represent the current set of SysVista KPIs for a zone, qualified by WACN and System. Columns include:

- **WACNId:** System's WACN
- **SystemId:** Zone's System
- **ZoneId:** Zone Id
- **RadiosConnected:** Radios currently connected to this zone. These include radios that have issued affiliations, registrations, associations and other radio-based or acknowledged activity (PTTs, Statuses, Dynamic Regrouping Ack, etc.) within the number of minutes set in Alias for the system's Radio ID Timeout Minutes.
- **GroupCallsInProgress:** Group calls currently in progress on this zone.
- **InterconnectCallsInProgress:** Interconnect calls currently in progress on this zone.
- **PrivateCallsInProgress:** Private calls currently in progress on this zone.
- **EmergencyCallsInProgress:** Emergency calls currently in progress on this zone. NOTE: this value is a sub-category of group calls and is included in the *GroupCallsInProgress* value.
- **GroupVoicePathsInUse:** Voice paths (slots) currently in use for group calls on this zone.
- **InterconnectVoicePathsInUse:** Voice paths (slots) currently in use for interconnect calls on this zone.
- **PrivateVoicePathsInUse:** Voice paths (slots) currently in use for private calls on this zone.
- **EmergencyVoicePathsInUse:** Voice paths (slots) currently in use for emergency group calls on this zone. NOTE: this value is a sub-category of group calls and is included in the *GroupVoicePathsInUse* value.
- **AvailableVoicePaths:** Number of voice paths (slots) not in use on this zone. This value is *TotalVoicePaths – GroupVoicePathsInUse - InterconnectVoicePathsInUse - PrivateVoicePathsInUse*.
- **TotalVoicePaths:** All voice paths (slots) on this zone. NOTE: This value is derived from channel-level settings in the GW3-TRBO Alias database.
- **BusiesInQueue:** Busies currently in queue on this zone.
- **ConnectionsPerSecond:** Connections per second on this zone, within the current 5-minute interval. This is based on all radio-based activity types. These include affiliations, registrations, associations and other radio-based or acknowledged activity (PTTs, Statuses, Dynamic Regrouping Ack, etc.)

- **CallsPerSecond:** Start of Calls received per second on this zone within the current 5-minute interval.
- **DT:** Date and Time these statistics were written.

## KpiSysVistaSites

Genesis will store existing SysVista site KPIs in the following table structure. Each row in this table will represent the current set of SysVista KPIs for a site, qualified by WACN, System, Zone. Columns include:

- **WACNId:** System's WACN
- **SystemId:** Zone's System
- **ZoneId:** Site's Zone
- **SiteId:** Site Id
- **RadiosConnected:** Radios currently connected to this site. These include radios that have issued affiliations, registrations, associations and other radio-based or acknowledged activity (PTTs, Statuses, Dynamic Regrouping Ack, etc.) within the number of minutes set in Alias for the system's Radio ID Timeout Minutes.
- **GroupCallsInProgress:** Group calls currently in progress on this site.
- **InterconnectCallsInProgress:** Interconnect calls currently in progress on this site.
- **PrivateCallsInProgress:** Private calls currently in progress on this site.
- **EmergencyCallsInProgress:** Emergency calls currently in progress on this site. NOTE: this value is a sub-category of group calls and is included in the *GroupCallsInProgress* value.
- **GroupVoicePathsInUse:** Voice paths (slots) currently in use for group calls on this site.
- **InterconnectVoicePathsInUse:** Voice paths (slots) currently in use for interconnect calls on this site.
- **PrivateVoicePathsInUse:** Voice paths (slots) currently in use for private calls on this site.
- **EmergencyVoicePathsInUse:** Voice paths (slots) currently in use for emergency group calls on this site. NOTE: this value is a sub-category of group calls and is included in the *GroupVoicePathsInUse* value.
- **AvailableVoicePaths:** Number of voice paths (slots) not in use on this site. This value is  $TotalVoicePaths - GroupVoicePathsInUse - InterconnectVoicePathsInUse - PrivateVoicePathsInUse$ .
- **TotalVoicePaths:** All voice paths (slots) on this site. NOTE: This value is derived from channel-level settings in the GW3-TRBO Alias database.
- **BusiesInQueue:** Busies currently in queue on this site.
- **ConnectionsPerSecond:** Connections per second on this site, within the current 5-minute interval. This is based on all radio-based activity types. These include affiliations, registrations, associations and other radio-based or acknowledged activity (PTTs, Statuses, Dynamic Regrouping Ack, etc.)
- **CallsPerSecond:** Start of Calls received per second one this site within the current 5-minute interval.



- **DT:** Date and Time these statistics were written.

## ***KPI View Definitions***

KPI data is available via the following views:

### **Kpi.SysVista.Systems**

Values aggregated at the System level within SysVista: Each row is qualified by WACN:

- [KpiSysVistaZones].WacnId
- [KpiSysVistaZones].SystemId
- [KpiSysVistaZones].ZoneId
- [KpiSysVistaZones].RadiosConnected
- [KpiSysVistaZones].GroupCallsInProgress
- [KpiSysVistaZones].InterconnectCallsInProgress
- [KpiSysVistaZones].PrivateCallsInProgress
- [KpiSysVistaZones].EmergencyCallsInProgress
- [KpiSysVistaZones].GroupVoicePathsInUse
- [KpiSysVistaZones].InterconnectVoicePathsInUse
- [KpiSysVistaZones].PrivateVoicePathsInUse
- [KpiSysVistaZones].EmergencyVoicePathsInUse
- [KpiSysVistaZones].TotalVoicePaths
- GroupVoicePathUtilization = [KpiSysVistaZones].GroupVoicePathsInUse / [KpiSysVistaZones].TotalVoicePaths
- InterconnectVoicePathUtilization = [KpiSysVistaZones].InterconnectVoicePathsInUse / [KpiSysVistaZones].TotalVoicePaths
- PrivateVoicePathUtilization = [KpiSysVistaZones].PrivateVoicePathsInUse / [KpiSysVistaZones].TotalVoicePaths
- EmergencyVoicePathUtilization = [KpiSysVistaZones].EmergencyVoicePathsInUse / [KpiSysVistaZones].TotalVoicePaths
- [KpiSysVistaZones].BusiesInQueue
- [KpiSysVistaZones].ConnectionsPerSecond
- [KpiSysVistaZones].CallsPerSecond
- [KpiSysVistaZones].DT

## Kpi.SysVista.Zones

Values aggregated at the Zone level within SysVista: Each row is qualified by WACN and System:

- [KpiSysVistaZones].WacnId
- [KpiSysVistaZones].SystemId
- [KpiSysVistaZones].ZoneId
- [KpiSysVistaZones].RadiosConnected
- [KpiSysVistaZones].GroupCallsInProgress
- [KpiSysVistaZones].InterconnectCallsInProgress
- [KpiSysVistaZones].PrivateCallsInProgress
- [KpiSysVistaZones].EmergencyCallsInProgress
- [KpiSysVistaZones].GroupVoicePathsInUse
- [KpiSysVistaZones].InterconnectVoicePathsInUse
- [KpiSysVistaZones].PrivateVoicePathsInUse
- [KpiSysVistaZones].EmergencyVoicePathsInUse
- [KpiSysVistaZones].TotalVoicePaths
- $\text{GroupVoicePathUtilization} = \frac{[\text{KpiSysVistaZones}].\text{GroupVoicePathsInUse}}{[\text{KpiSysVistaZones}].\text{TotalVoicePaths}}$
- $\text{InterconnectVoicePathUtilization} = \frac{[\text{KpiSysVistaZones}].\text{InterconnectVoicePathsInUse}}{[\text{KpiSysVistaZones}].\text{TotalVoicePaths}}$
- $\text{PrivateVoicePathUtilization} = \frac{[\text{KpiSysVistaZones}].\text{PrivateVoicePathsInUse}}{[\text{KpiSysVistaZones}].\text{TotalVoicePaths}}$
- $\text{EmergencyVoicePathUtilization} = \frac{[\text{KpiSysVistaZones}].\text{EmergencyVoicePathsInUse}}{[\text{KpiSysVistaZones}].\text{TotalVoicePaths}}$
- [KpiSysVistaZones].BusiesInQueue
- [KpiSysVistaZones].ConnectionsPerSecond
- [KpiSysVistaZones].CallsPerSecond
- [KpiSysVistaZones].DT

## Kpi.SysVista.Sites

Values aggregated at the Site level from the **KpiSysVistaSites** table. Each row is qualified by WACN, System, and Zone.

- [KpiSysVistaSites].WacnId
- [KpiSysVistaSites].SystemId
- [KpiSysVistaSites].ZoneId
- [KpiSysVistaSites].SiteId
- [KpiSysVistaSites].RadiosConnected
- [KpiSysVistaSites].GroupCallsInProgress
- [KpiSysVistaSites].InterconnectCallsInProgress
- [KpiSysVistaSites].PrivateCallsInProgress
- [KpiSysVistaSites].EmergencyCallsInProgress
- [KpiSysVistaSites].GroupVoicePathsInUse
- [KpiSysVistaSites].InterconnectVoicePathsInUse
- [KpiSysVistaSites].PrivateVoicePathsInUse
- [KpiSysVistaSites].EmergencyVoicePathsInUse
- [KpiSysVistaSites].TotalVoicePaths
- $\text{GroupVoicePathUtilization} = \frac{[\text{KpiSysVistaSites}].\text{GroupVoicePathsInUse}}{[\text{KpiSysVistaSites}].\text{TotalVoicePaths}}$
- $\text{InterconnectVoicePathUtilization} = \frac{[\text{KpiSysVistaSites}].\text{InterconnectVoicePathsInUse}}{[\text{KpiSysVistaSites}].\text{TotalVoicePaths}}$
- $\text{PrivateVoicePathUtilization} = \frac{[\text{KpiSysVistaSites}].\text{PrivateVoicePathsInUse}}{[\text{KpiSysVistaSites}].\text{TotalVoicePaths}}$
- $\text{EmergencyVoicePathUtilization} = \frac{[\text{KpiSysVistaSites}].\text{EmergencyVoicePathsInUse}}{[\text{KpiSysVistaSites}].\text{TotalVoicePaths}}$
- [KpiSysVistaSites].BusiesInQueue
- [KpiSysVistaSites].ConnectionsPerSecond
- [KpiSysVistaSites].CallsPerSecond
- [KpiSysVistaSites].DT

## KPI Options

### Option Definitions

The KPIs feature provides the following options (defaults shown in **bold**):

- **KpiEnabled**: Write KPI values out to KpiSysVistaSites table
  - **1 = Enabled**
  - 0 = Disabled
- **KpiInterval**: Number of seconds between each time KPIs are calculated and written to the database. Default is **5**.
- **KpiConnectionDefinitionOption**: Actions to consider for a radio connection. Bitmask field. Value is sum of all applicable options. (Affects Radios Connected and Connections Per Second KPIs)
  - **0 = None**
  - **1 = Associations**
  - **2 = Affiliations**
  - **4 = Registrations**
  - **8 = RadioActivity**

## Setting KPI Options

KPI options are stored in the *ModuleSettings* table of the GW3-TRBO database under the Module Id of the SysVista module (see the *Modules* table) and a Parent of 0. If a setting is not present, the KPIs feature uses the default shown above.

Once you change a KPI feature setting, you must restart the GW3-TRBO service for the change to take effect.

Example KPI setting in the ModuleSettings table for KpiInterval:

<b>ModuleSettings</b>				
<b>ID</b>	<b>ModuleId</b>	<b>Parent</b>	<b>FieldName</b>	<b>FieldValue</b>
14289	23	0	KpiInterval	10



**Radio Activities**

This section shows each packet activity that is considered radio activity by the logic in SysVista. If your connection definition includes **Radio Activity**, SysVista will consider radios connected via these activities in the **Radios Connected** statistic. These activities do not affect the **Connections per Second** statistic.

Activity
Busy
Channel Assignment
RM/RT Command ACK

**Radio Disconnected Activity**

This section shows each activity that is considered a radio disconnection by the logic in SysVista. These packets will result in SysVista removing a radio from one or more connected radios lists. These radio disconnected activities may differ from other GW3-TRBO modules.

Activity	List(s) Affected
Deaffiliation	Affiliations
Selective Inhibit ACK	Affiliations and Registrations