

GenWatch LOCATION SERVICES

Enriching GenWatch® With Location Information
SIMPLIFY REPORTING • VALIDATE DECISIONS • SAVE TIME

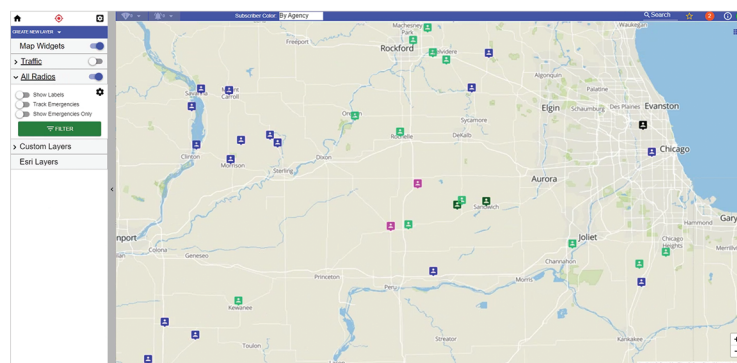
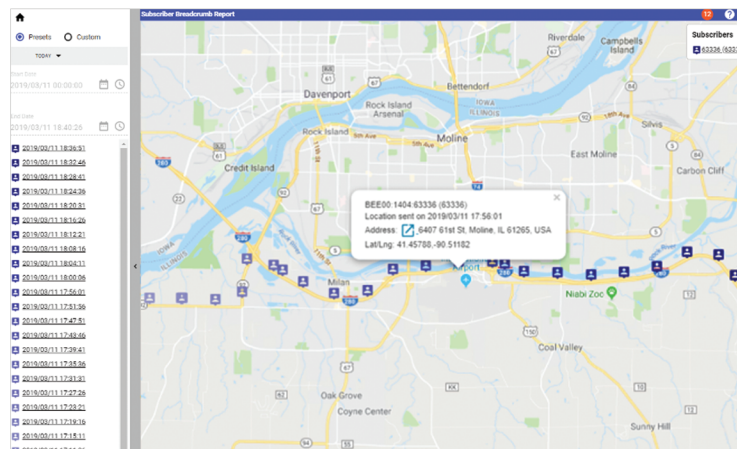
FIND RADIOS QUICKLY

Radio System Managers often utilize the GenWatch Radio Quick Search feature to find the last known location of a lost or stolen radio. Radio System Managers can view the latest timestamp, radio information, and last reported location with a single click. In addition, users can display a Historic Breadcrumb Report to view a radio's location over a specified period.

CONTROL VIEWING PRIVILEGES

The GenWatch Location Services Enhancement allows Radio System Managers to provide restricted radio location views to member agencies. These filtered views ensure that each agency only sees the locations of their respective radios.

For agencies who would prefer their radio locations not be monitored, a blacklist can be created within GenWatch. This ensures blacklisted radio locations are only visible when an emergency is initiated from that radio.



LET'S TALK

+1 903-787-7400 — International
+1 877-548-0465 — Toll Free US & Canada
sales@genesishworld.com
genesishworld.com
Video Library: genesishworld.com/ondemand

**YOU DESERVE TO GET THE MOST
OUT OF YOUR ASTRO 25 SYSTEM
INVESTMENT!**

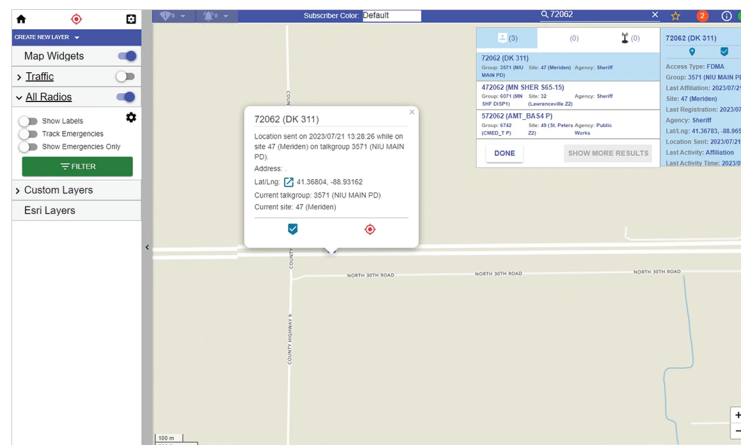
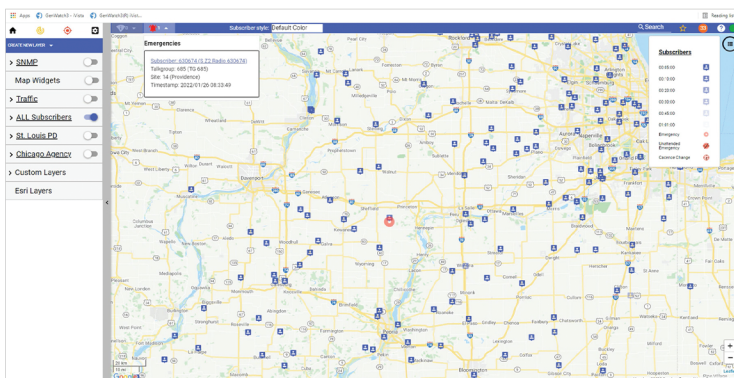


ASTRO 25 is a registered trademark of Motorola Trademark Holdings, LLC
GenWatch is a registered trademark of GenCore Candeco, Ltd.

GenWatch LOCATION SERVICES

Enriching GenWatch® With Location Information
SIMPLIFY REPORTING • VALIDATE DECISIONS • SAVE TIME

GenWatch® Location Services is an enhancement to GenWatch ATIA and allows Radio System Managers to monitor the location of every GPS-capable and enabled radio on a Motorola ASTRO® 25 system via the Motorola IMW (Intelligent Middleware). Whether in an emergency or for general accountability, knowing the location of users operating on the system is essential.



NEVER MISS AN EMERGENCY

While monitoring the location of hundreds (or thousands) of radios, it is important to never miss a user in distress. When a radio user has initiated an emergency, a flashing alarm is shown on the GenWatch map. Once the alert is acknowledged within GenWatch, available details, including the radio's current location, last reported location, and site and talkgroup affiliations, are displayed.

For the duration of the active emergency, the map will continuously center over the unit until the emergency is cleared from the GenWatch map or a user-configurable timer expires. If multiple emergencies are in progress, the map will move and resize as needed so all emergencies remain centered on the screen.

LET'S TALK

+1 903-787-7400 — International
+1 877-548-0465 — Toll Free US & Canada
sales@genesishworld.com
genesishworld.com
Video Library: genesishworld.com/ondemand



ASTRO 25 is a registered trademark of Motorola Trademark Holdings, LLC
GenWatch is a registered trademark of GenCore Candeo, Ltd.