

# GADI

A Time and Labor Saving MCC 7500 & AXS Console Enhancement

**IMPROVE RESOURCE MANAGEMENT • STREAMLINE WORKFLOWS • ENHANCE DISPATCHER SATISFACTION**

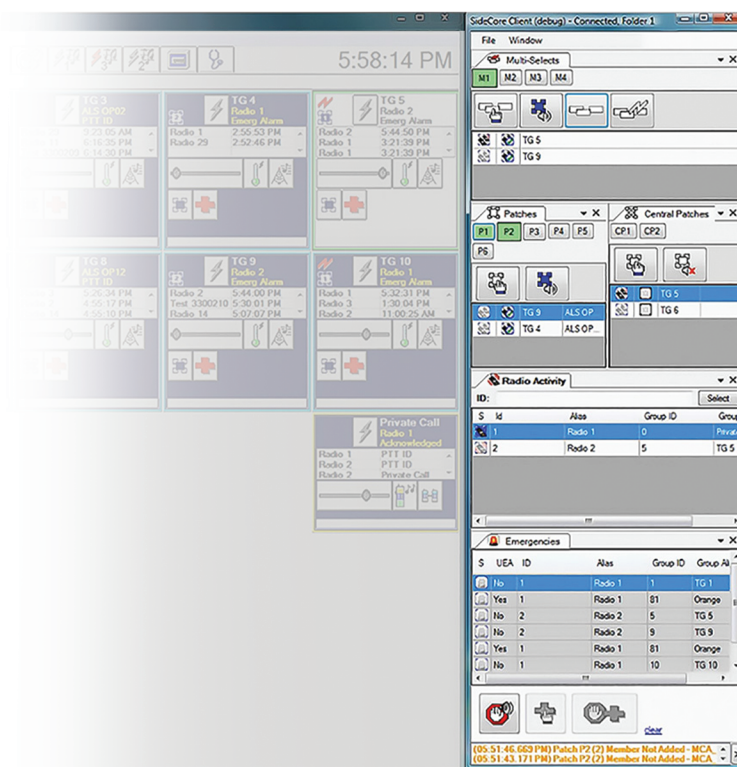
*Dispatchers have an intense and demanding job that requires focus and the ability to multi-task. Genesis-Aided Dispatch Interface (GADI) enhances the standard features in Motorola MCC 7500 and AXS consoles and provides dispatchers with functionality that makes their day-to-day tasks more streamlined so they can concentrate on what matters most.*

## IMPROVE RESOURCE MANAGEMENT

It is vital that dispatchers and dispatch supervisors understand how their resources are being utilized. For instance, knowing when emergencies are happening on a talkgroup that is not being monitored, where resources are patched, and having the ability to add resources to those patches is crucial to effective resource management.

**Unattended Emergencies** allow unmonitored talkgroups to be dynamically added to a specified console(s) when an emergency call has been initiated. This solution is particularly beneficial for users within covert operations or agencies that do not require ongoing monitoring of their talkgroups.

**Centralized Patch** shares resources across all console positions. The patches reside on a single server where authorized dispatchers can activate, deactivate, add, or remove members from a patch regardless of where the resource is hosted. Permanent patches can also be created to keep conventional channels patched to trunked talkgroups.



## LET'S TALK

+1 903-787-7400 — International

+1 877-548-0465 — Toll Free US & Canada

sales@genesishworld.com

[genesishworld.com](http://genesishworld.com)

Video Library: [genesishworld.com/ondemand](http://genesishworld.com/ondemand)



# GADI

A Time and Labor Saving MCC 7500 & AXS Console Enhancement

**IMPROVE RESOURCE MANAGEMENT • STREAMLINE WORKFLOWS • ENHANCE DISPATCHER SATISFACTION**

## STREAMLINES WORKFLOWS

Dispatchers' daily tasks are fast-paced, high-stress, and critical! GADI streamlines workflows by implementing intuitive shortcuts to commonly used functions.

**Predefined Patches** can be created for the most used talkgroup patches, helping minimize errors and save time. These patches can be activated and deactivated with a simple mouse click.

**Active Patch** displays all active patches on the radio system in one location, eliminating the need to hunt through console folders to find where a radio is currently patched.

**Emergency Handling** puts all emergencies front and center, simplifying the administration of critical events.

**Configurable Input Devices** can be programmed to perform a series of unique functions with a single button press. For example, a button can be programmed to play an alert tone, active a patch or even flash to let the dispatch know a site it in site trunking.



## ENHANCES DISPATCHER SATISFACTION

Every dispatcher has preferences on how their position is set up to make their environment as effective as possible. Selecting which audio they are listening to and the volume of emergencies and tones should be something they can easily control. GADI offers solutions to make this possible.

**Volume and Tone Management** gives users the option to choose which resource's emergency tone plays in their headset and allows them to silence the rest, helping to minimize distractions.

**Radio Finder** automates the process of finding a radio on conventional channels. Radio Finder will cycle through all conventional channels, issuing a radio check until the radio is found.

**Radio Ambush** allows users to set a radio to be inhibited as soon as it is detected anywhere on the system. An email indicating whether or not the inhibit was successful is then sent to the user.

### GADI Development

For customers requiring additional functionality, Genesis specializes in providing unique solutions for MCC 7500 dispatch console users. Contact Sales to discuss your requirements.

**YOU DESERVE TO GET THE MOST  
OUT OF YOUR DISPATCH CONSOLE  
INVESTMENT!**

## LET'S TALK

+1 903-787-7400 — International

+1 877-548-0465 — Toll Free US & Canada

[sales@genesishworld.com](mailto:sales@genesishworld.com)

[genesishworld.com](http://genesishworld.com)

Video Library: [genesishworld.com/ondemand](http://genesishworld.com/ondemand)

