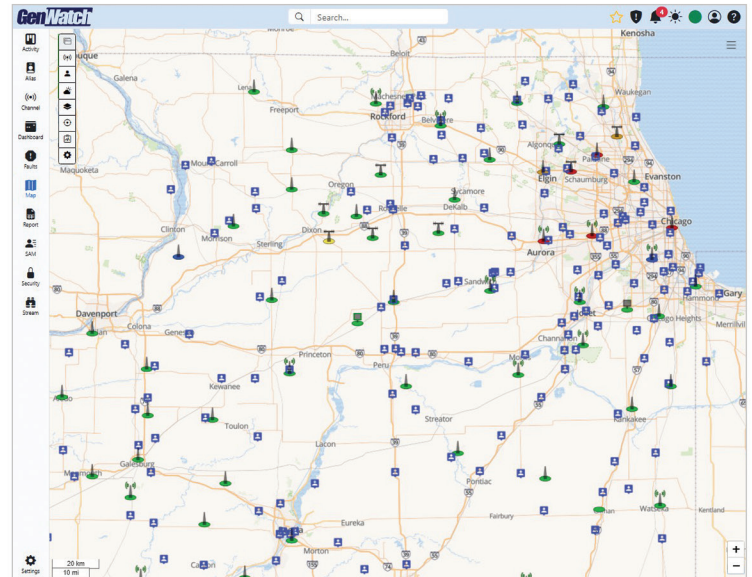
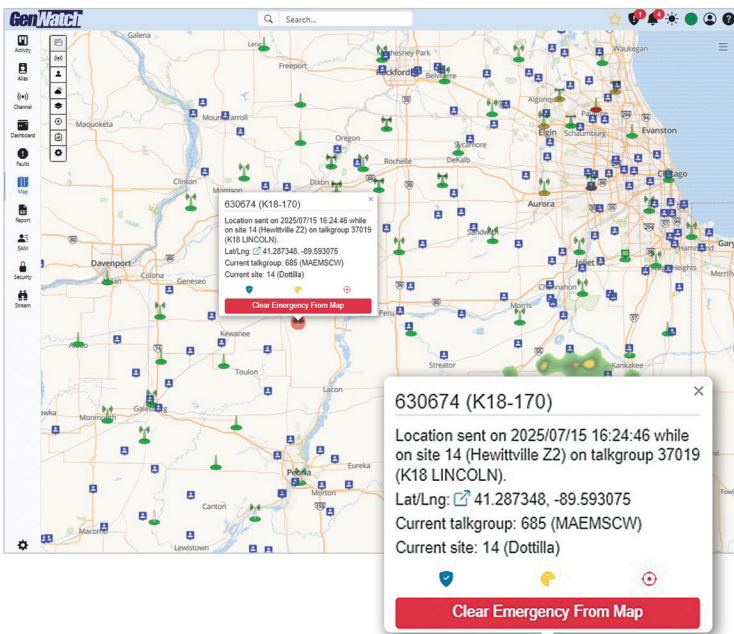


GenWatch Location Services

Enriching GenWatch with Location Information
SIMPLIFY REPORTING • VALIDATE DECISIONS • SAVE TIME

GenWatch® Location Services is an enhancement that allows Radio System Managers to monitor the location of every GPS-capable and enabled radio on an ASTRO 25 system by integrating with Motorola's Intelligent Middleware (IMW). This powerful tool ensures that you always have accurate visibility on the whereabouts of each radio. With location tracking and historical insights at your fingertips, you can make faster, more informed decisions that save time and protect your personnel.



LOCATION AWARENESS AND EMERGENCY RESPONSE

When a radio user initiates an emergency, GenWatch instantly flags the device with a flashing alarm icon on the map. The moment alert is acknowledged, the user's precise GPS coordinates, last reported location and timestamp, as well as associated site and talkgroup details will be displayed. Throughout the emergency, the map dynamically centers on the distressed unit—tracking it persistently until the alert is cleared.

LET'S TALK

+1 903-787-7400 — International
+1 877-548-0465 — Toll Free US & Canada
sales@genesishworld.com
genesishworld.com
Video Library: genesishworld.com/ondemand



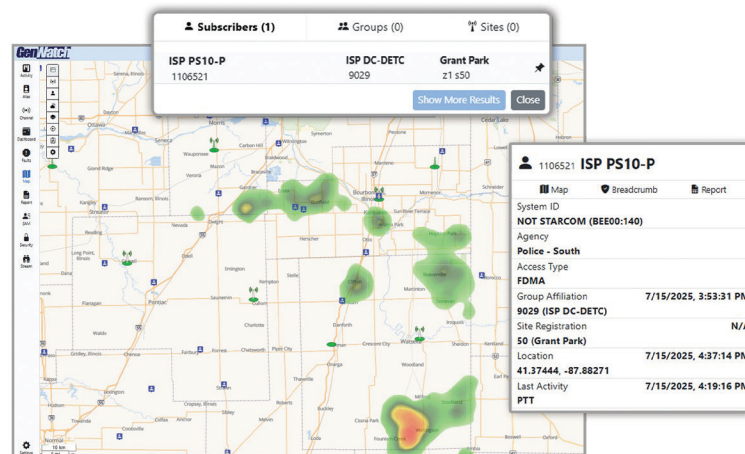
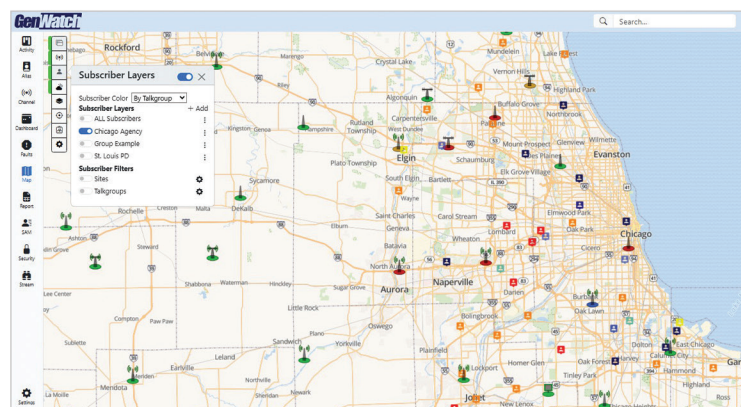
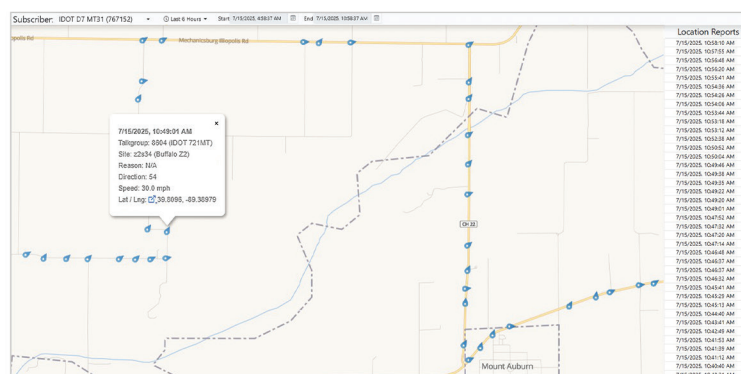
ASTRO 25 is a registered trademark of Motorola Trademark Holdings, LLC
GenWatch3 is a registered trademark of GenCore Candeo, Ltd.

GenWatch Location Services

Enriching GenWatch with Location Information
SIMPLIFY REPORTING • VALIDATE DECISIONS • SAVE TIME

STREAMLINED RADIO TRACKING

Locating a missing or stolen radio has never been easier. With GenWatch Radio Quick Search, a subscriber's last known position, site registration, talkgroup affiliation, activity and timestamp is available with a single click. For deeper analysis, a Historic Breadcrumb Report can be generated to visualize a radio's movement over any specified period.



ACCESS CONTROL AND PRIVACY

GenWatch Location Services also empowers administrators to safeguard sensitive location data through customizable viewing privileges. Agency-specific filters can be created so each member organization only sees its own radios on the map. For units that should remain hidden under normal operations, a blacklist ensures their positions are invisible, except when those devices trigger an emergency signal. This granular approach to access management preserves operational security while maintaining accountability during critical events.

YOU DESERVE TO GET THE MOST OUT OF YOUR ASTRO 25 SYSTEM INVESTMENT!

LET'S TALK

+1 903-787-7400 — International
+1 877-548-0465 — Toll Free US & Canada
sales@genesismworld.com
genesismworld.com
Video Library: genesismworld.com/ondemand



ASTRO 25 is a registered trademark of Motorola Trademark Holdings, LLC
GenWatch3 is a registered trademark of GenCore Candeco, Ltd.