



GenWatch3®
Hardware Installation Guide
Software Version 2.23.5



Trademarks

Any brand or product names are trademarks or registered trademarks of their respective holders.

The Genesis Group Trademark Information

GenWatch3® is a registered trademark of GenCore Candeo, LTD., a subsidiary of Burks GenCore Co., Inc. D.B.A. The Genesis Group and Phil Burks.

Copyright

Copyright © 2006-2023; Burks GenCore Co., Inc. D.B.A. The Genesis Group and Phil Burks. All rights are reserved. No part of this publication or the associated program may be reproduced, transmitted, transcribed, in whole or in part, in any form or by any means, whether it is mechanical, magnetic, optical, electronic, manual or otherwise, without the prior written consent of Burks GenCore Co., Inc. D.B.A:

The Genesis Group and Phil Burks

5800 Eagles Nest Blvd

Tyler, Texas 75703.

Includes technology licensed from Motorola.

Disclaimer

The GenWatch3 Hardware Installation Guide is printed in the U.S.A. Burks GenCore Co., Inc. D.B.A. The Genesis Group and Phil Burks believe that the information included in this manual is correct; however, Burks GenCore Co., Inc. D.B.A. The Genesis Group and Phil Burks reserves the right to alter, revise and make periodic changes to the manual and its contents. Burks GenCore Co., Inc. D.B.A. The Genesis Group does not assume responsibility to notify any person of such revisions or changes. While we have taken strides to carefully examine our software and documentation and believe that it is reliable, the Genesis Group and Phil Burks assume no responsibility for the use of the manual, or GenWatch3 software, nor for any patent infringements or other rights of third parties who may use the manual or the GenWatch3 software. Burks GenCore Co., Inc. D.B.A. The Genesis Group and Phil Burks make no representations or warranties with respect to the contents or fitness for a particular purpose beyond the cost of the software paid by the end-user.

The software contains valuable trade secrets and proprietary information. Unauthorized use of the manual or software can result in civil damages and criminal prosecution. As an end user, you agree to abide by and heed these statements.

License

Title to the media on which the program is recorded and to the documentation in support of the product is transferred to you, but title to the program, and all subsequent copies of the program, despite the form or media in or on license is not a sale of the original or any subsequent copy. You assume responsibility for the selection of the program to achieve your intended results, and for the installation, use, and results obtained from the program.

Refer to the GenWatch3 Manual Overview for your full license. All license information contained on pages 4-7 (Book 600-2.23.5-AA.1) are to be considered as contained herein.

Support

Customer satisfaction is our number one priority at Genesis. We are here to provide you with the best software possible, and we want to know when you have any questions, concerns or problems with GenWatch3 so that we can make it a better product for everyone.

Refer to the *Troubleshooting & Support* section of the GenWatch3 Manual Shell (Book 600-2.23.5-AA.1) for complete support and contact information.

Document History

| Revision | Description | Author |
|-----------------|-------------------------------|---------------|
| 2.0.2 | Initial Release | STH |
| 2.0.3 | Release revisions | KIH |
| 2.0.5 | SQL Server 2008 guide added | KIH |
| 2.0.5 | Release revisions | JAW |
| 2.0.6 | Release revisions | TDW |
| 2.0.6.6 | Release revisions | TDW |
| 2.0.6.7 | Added SQL Server 2005 warning | KIH |
| 2.2 | Revision before release | CWF |
| 2.3 | Release Revisions | REB |
| 2.4 | Revisions Before Release | WRK |
| 2.5 | Revisions Before Release | CWF |
| 2.6 | Revisions Before Release | CWF |
| 2.7 | Revisions Before Release | JAW |
| 2.8 | Revisions Before Release | ATG |
| 2.9 | Revisions Before Release | CWF |
| 2.10 | Revisions Before Release | CWF |
| 2.11 | Conversion to docx | BCY |
| 2.12 | Revisions Before Release | JAW |
| 2.13 | Revisions Before Release | ATG |
| 2.14 | Revisions Before Release | JAW |
| 2.15 | Revisions Before Release | REB |
| 2.16 | Revisions Before Release | JPS |

Table of Contents

| | |
|--|-----------|
| <i>Trademarks</i> | 3 |
| <i>The Genesis Group Trademark Information</i> | 3 |
| <i>Copyright</i> | 3 |
| <i>Disclaimer</i> | 3 |
| <i>License</i> | 3 |
| <i>Support</i> | 3 |
| DOCUMENT HISTORY | 4 |
| TABLE OF CONTENTS | 5 |
| ABOUT THIS MANUAL | 7 |
| GOALS | 7 |
| WHO SHOULD READ THIS MANUAL? | 7 |
| HOW THIS MANUAL IS ORGANIZED | 7 |
| STAGE 1 HARDWARE COMPONENTS | 8 |
| STAGE 2 SQL SERVER INSTALLATION | 15 |
| SQL SERVER 2017 | 15 |
| UPGRADING FROM SQL SERVER EXPRESS | 19 |
| CONCLUSION | 23 |
| CONCLUSION | 23 |
| WHAT NEXT? | 23 |

Goals

This guide will take you through the steps necessary to properly install and prepare a machine for the GenWatch3 software program.

Who Should Read This Manual?

This document is provided to assist technicians who must perform a hardware replacement for a GenWatch3 installation.



If you are an end user or have just received your GenWatch3 machine from Genesis, then congratulations, you are already done! Genesis performs all pertinent stages of this guide prior to shipping GenWatch3 machines. As an end user, you simply need to plug in your Rocket Port® (if this is a Host machine that will have a CAD system connected) and (optionally) your external alarm relay. Refer to Stage 1 for guidance in plugging these in. Your next step will be to go through the Quickstart book that is applicable to your input type. Many of the steps in it have also been done for you, but you will still need to go through it to ensure that everything is configured accurately.

How This Manual Is Organized

This manual is organized as follows:

- **Hardware Components:** Instructions on installing and configuring additional hardware devices.
- **SQL Server Installation:** Instructions on installing SQL Server.

This manual contains the following images, used to indicate that a segment of text requires special attention:

-  **Additional Information:** Additional information is used to indicate shortcuts or tips.
-  **Warning:** Warnings are used to indicate possible problem area, such as a risk of data loss or incorrect/unexpected functionality.

Stage 1

Hardware Components

The next stage involves installing and configuring the additional hardware components required by GenWatch3.

1. Shut down the machine. To ensure that the power is off, unplug the power cord from the back of the PC.



Before opening the computer case, unplug the AC power cord from the back of the computer.

2. Find the box containing the secondary serial adapter that was shipped with the GenWatch3 machine. Find the serial adapter card in this box and ensure that the 4.5" spacer is attached to it. If the 3" spacer is attached, remove it and attach the 4.5" spacer that is included in the box.
3. Remove the side panel of the PC, unlock the card by pressing in and back on the green plastic arrows.
4. Insert the modem that was included with the GenWatch3 machine into the bottom-most appropriate slot.
5. Insert the secondary serial card into the top-most appropriate slot.
6. Plug the other end of the serial card's cable into the motherboard. Your system should look like the following machine.

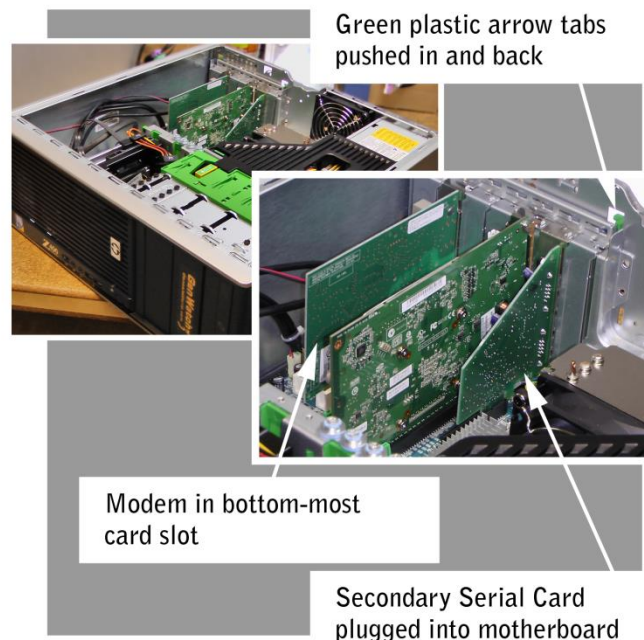


Figure 1.1 – Hardware positioning

7. Plug in the power cord in the back of the PC and turn the machine back on.
8. Plug the External Alarm Relay (if applicable) into the USB slot right beside the NIC port on the motherboard.



Figure 1.2 – External Alarm Relay

9. Wait for the status light on the device to turn green to confirm that it was installed properly.



The rest of the steps below in this chapter apply only if you have a RocketPort that must be installed on the GenWatch3 Host.

10. Shut down the machine. To ensure that the power is off, unplug the power cord from the back of the PC.
11. Insert the Rocket Port PCI card that came with the machine into the slot right above the modem. Your system should now look like the following machine:



Rocket Port PCI Card

Figure 1.3 – Rocket Port PCI Card

12. Connect the 16-port serial port block that shipped with the machine into the card at the back of the machine.



Figure 1.4 – Rocket Port Cable

13. Plug in the power cord in the back of the PC and Turn the machine back on.
14. Download and execute the driver installer from the Control website.
15. Run the setup wizard with default values selected by clicking the **Next >** button on each window of the installer. On the last window, click the **Install** button.

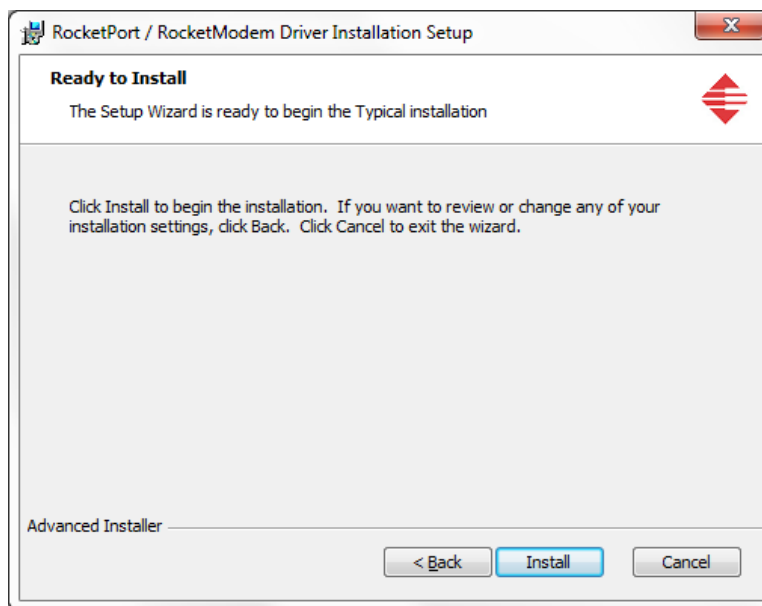


Figure 1.5 – Installation window

16. Depending on your User Account Control settings, you may get several popups requesting permission to install drivers. Click **Yes** on these popups to continue your installation.

17. When you get to the window with the **Finish** button, ensure the checkbox next to **Launch RocketPort / RocketModem Driver Installation** is checked and click **Finish**.

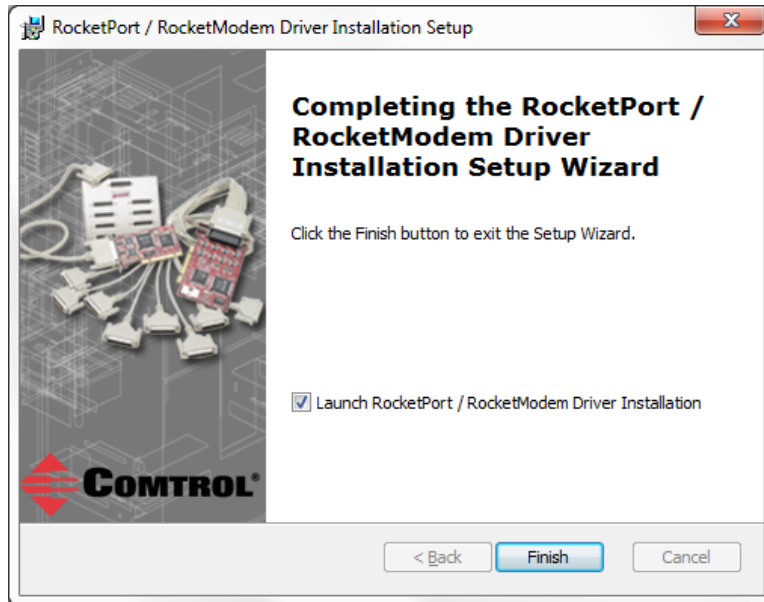


Figure 1.6 – Finish Driver Installation

18. On the resulting *Control Driver Installation* window, click **Next >**.



Figure 1.7 – Control Driver Installation Wizard

19. On the *Install, Update or Uninstall driver* window, select **Install** and click the **Next >** button.

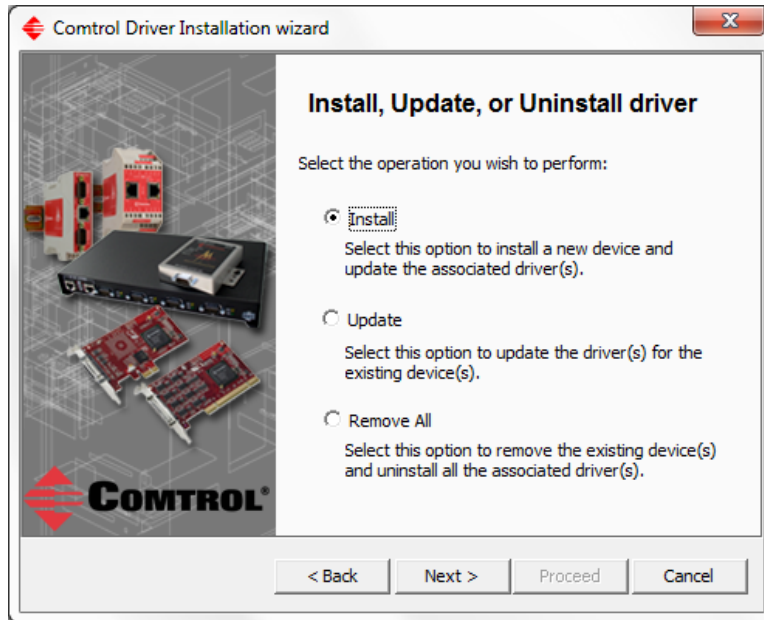


Figure 1.8 - Install, Update or Uninstall driver window

20. Click the **Next** button through the next windows. On the *Summary* window, click the **Proceed** button.

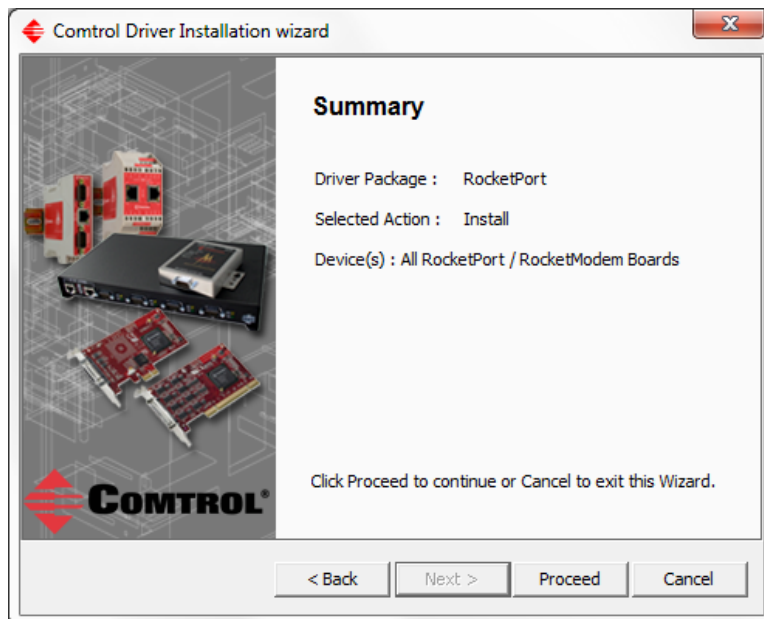


Figure 1.9 – Summary window

21. You will see a *Driver Installation Notice* popup window. Click **OK** on this window and wait for the installer to finish.

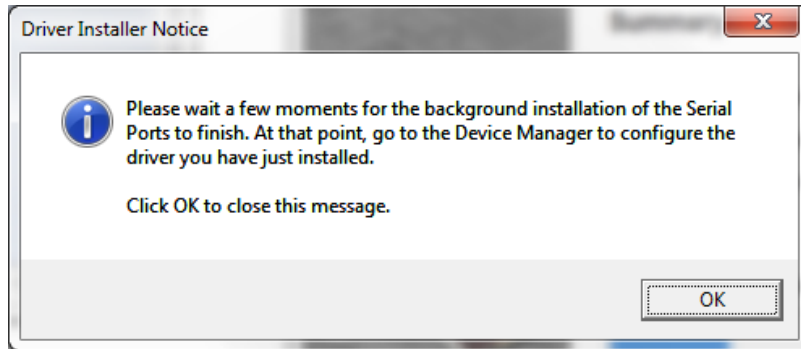


Figure 1.10 - Driver Installation Notice

22. Your computer is now going through the process of installing each port of the RocketPort card. This is done in the background and requires no user input.
23. When the installation has finished, the *Summary* window will have the **Close** button enabled. Click **Close** to complete the installation.

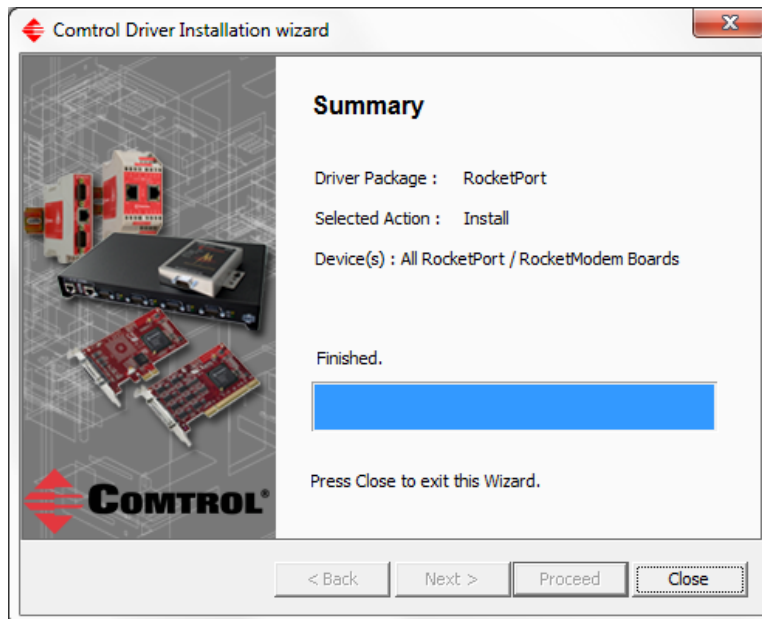


Figure 1.11 – Summary window after installation

This stage installs SQL Server on the GenWatch3 machine.

SQL Server 2017

1. The software may be installed from a DVD. In this case, insert the SQL Server 2017 disk into the CD/DVD drive on the machine. Right-click on the CD/DVD drive in Windows Explorer and select **Autoplay**. To install from a network share, locate the SQL Server installation files and double click setup.exe. In either case, the installation will begin.
2. Select **Installation** in the left-hand menu. Then click on **New SQL Server stand-alone or add features to an existing installation**.

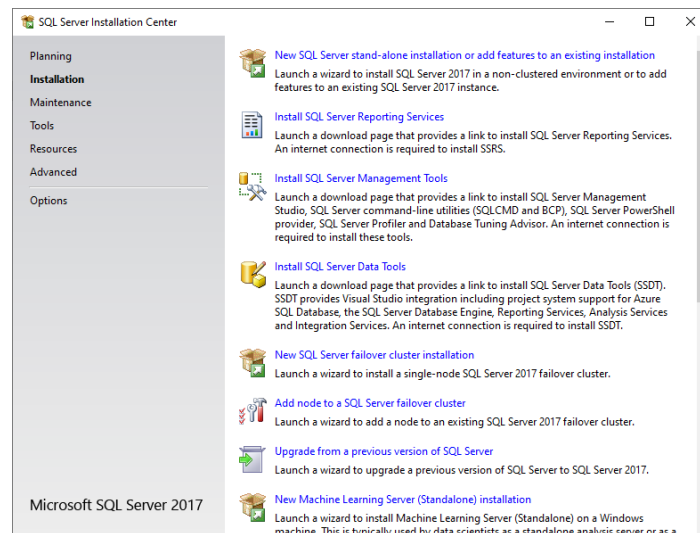


Figure 2.1 – SQL Server Installation Center

3. Enter the license information that was provided with your copy of SQL Server and click **Next**.

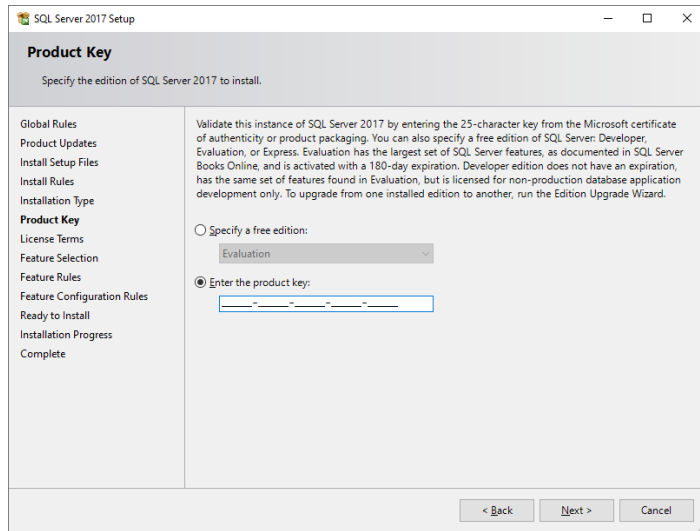


Figure 2.2 – Product Key

4. On the *License Terms* window, accept the licensing terms and click the **Next >** button.
5. Accept the default settings until you get to the *Feature Selection* window. Select all available features except **Machine Learning Services**, **PolyBase Query Service for External Data**, **Analysis Services**, and **Scale Out Worker**. Click **Next**.

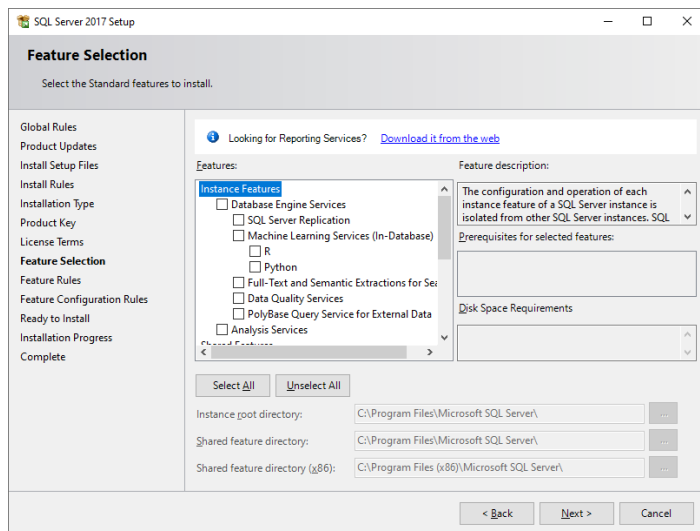


Figure 2.3 – Feature Selection

6. Select **Default Instance** and click **Next**.

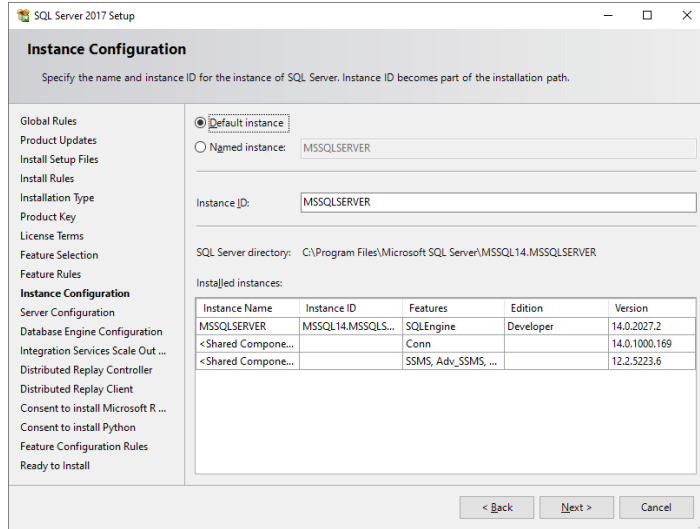


Figure 2.4 – Instance Configuration

7. Use the default settings until you get to the *Server Configuration* window. Enter **NT AUTHORITY\SYSTEM** for all services. Then click **Next**.

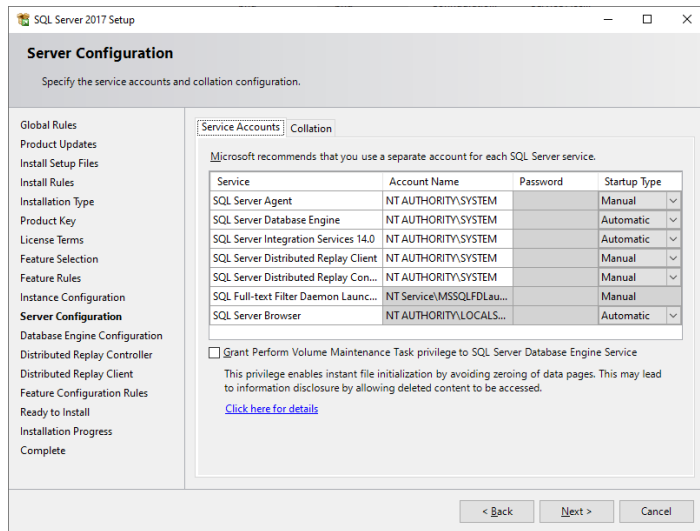


Figure 2.5 – Server Configuration

8. Select **Mixed Mode** authentication and set the SA password. The *Database Engine Configuration* window is also used to designate which Windows accounts should have server administrator privileges. Click **Add...** to open the **Select Users, Computers, Service Accounts, or Groups** dialog.

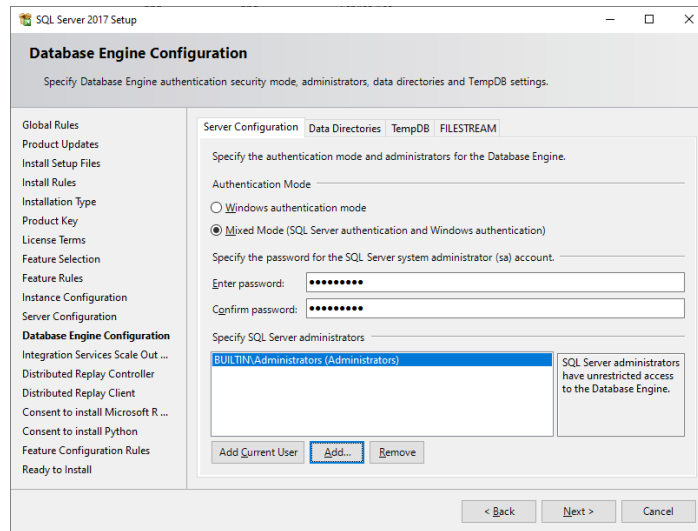


Figure 2.6 – Database Engine Configuration



Please make record of the password entered. You will not be able to login with the **sa** account without this password.

On this window, type “[Computer Name]\Administrators” (Ex: “GW3Host1\Administrators”) and click OK.

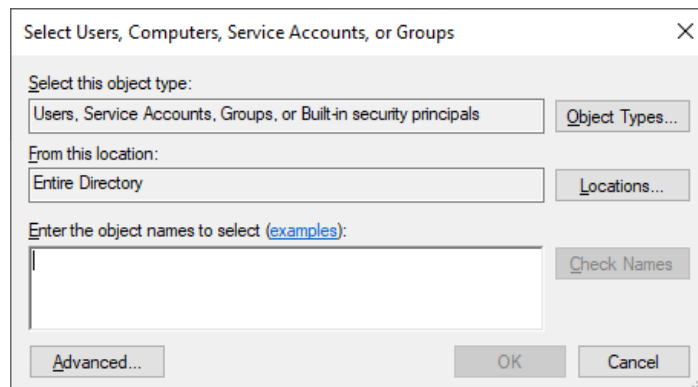


Figure 2.7 – Select Users, Computers, Service Accounts, or Groups



Domain users should also add domain administrators using “[Domain]\Administrators

Use default settings for the remainder of the windows and the installation will begin.

Upgrading From SQL Server Express

1. Double-click the executable file on the installation source.
2. The *SQL Server Installation Center* window will be displayed. Select the **Maintenance** option on the left panel.



Figure 2.8 – SQL Server Installation Center

3. Click on the **Edition Upgrade** button on the right panel. This will launch the SQL Server Setup.

4. On the *Product Key* page, enter the product key and click the **Next >** button to continue the installation.

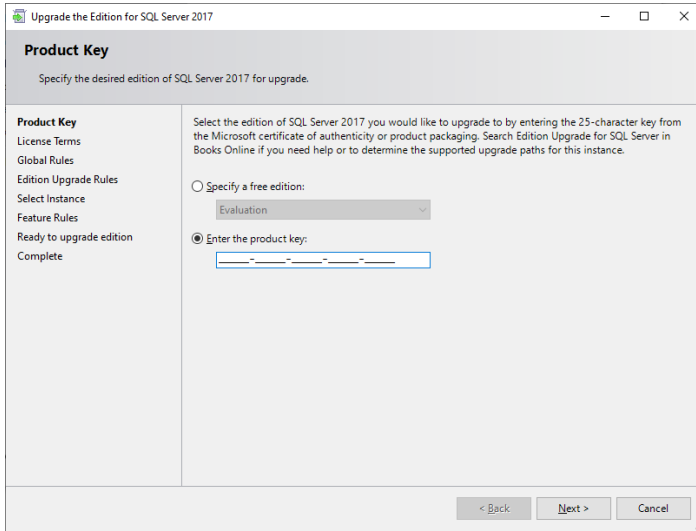


Figure 2.9 – Product Key window

5. On the *License Terms* window, accept the licensing terms and click the **Next >** button.

- The *Select Instance* window lists all SQL instances currently installed. Select the appropriate SQL instance to upgrade (typically this will be SQLEXPRESS).

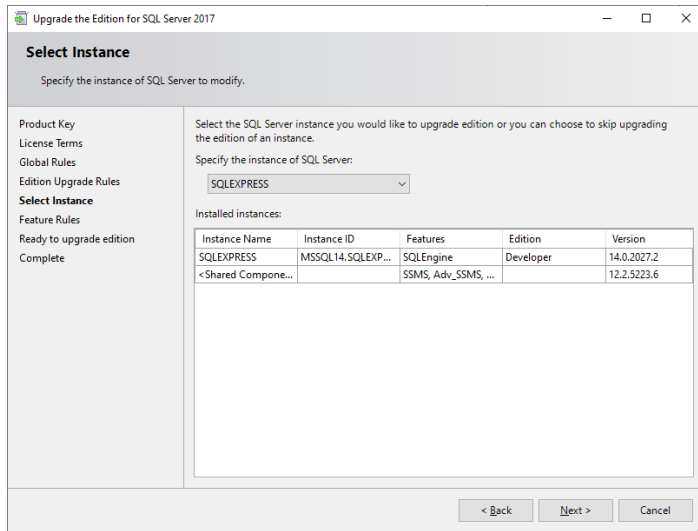


Figure 2.10 – Select Instance

Use default settings for the remainder of the windows and the installation will begin.

The *Complete* window may notify you that there are operations pending that require a restart. Click **OK** on the popup that tells you a restart is required then click the **Close** button to complete the installation. You may receive an additional popup telling you a restart is required, click **OK** on this dialog and manually restart your computer to complete your upgrade.

Conclusion

Conclusion

This completes the preparation of the GenWatch3 machine for the installation of the GenWatch3 software.

What Next?

Refer to the appropriate document below for further instructions for software installation and configuration.

- **GenWatch3 GW_RSP25 Quickstart Book**
- **GenWatch3 GW_ATIA Quickstart Book**

These documents are located on your GenWatch3 installation media.