

GENESIS APM ENHANCEMENT

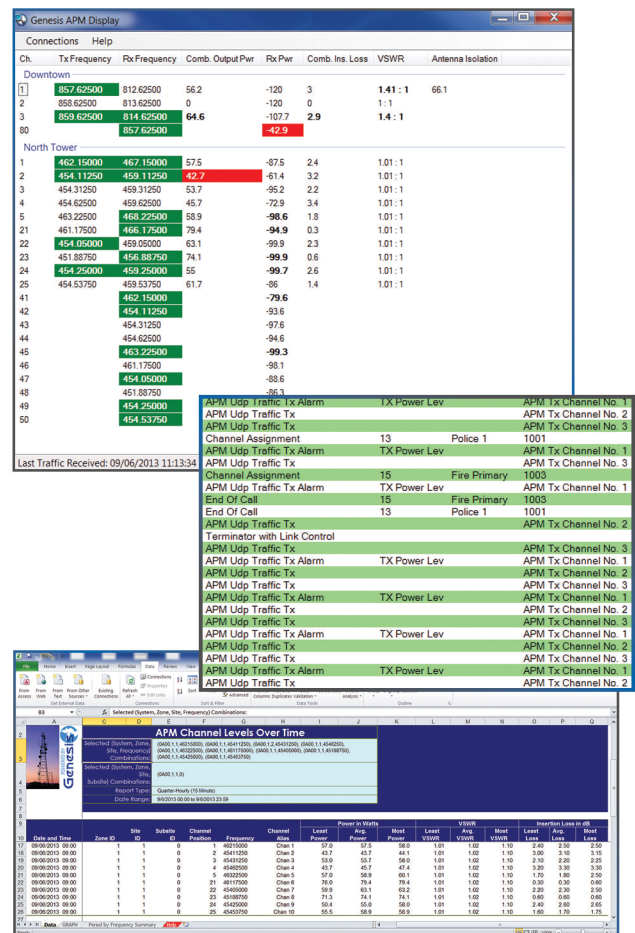
REMOTE MONITORING, ARCHIVING & REPORTING ON THE RFI ADVANCED POWER MONITOR

GenWatch3 can be enhanced by adding data inputs for monitoring, management and reporting. GenWatch3 receives a data feed from each APM device deployed in the field for real-time views of each channel's forward and reflected power, VSWR, combiner loss and antenna isolation. This information is also used to create triggers for notification via SNMP, email and desktop alerts. The data is also archived in SQL databases for use in forensic reporting and analysis.



SOLUTION BENEFITS

- ▶ Current power levels are monitored in conjunction with multiple data streams, including ATIA, OTA and MOTOTRBO™.
- ▶ Power levels on a per-call basis can be viewed.
- ▶ While information is gathered, it is recorded and stored in SQL databases for long-term archiving.
- ▶ Live activity may be paused and resumed in real time.
- ▶ Archived data may be analyzed for trending reports over time.
- ▶ Triggers may be established with variable thresholds. Triggered events, such as high/low VSWR levels or power spikes, can send an alert, sound an alarm, close a relay, or perform other user-defined functions.
- ▶ Notifications are pushed to key personnel via email, SMS or SMTP.
- ▶ ROI: As a centralized solution offering remote analysis, on-site visits are mitigated, saving valuable company resources.
- ▶ GenWatch3 is sold and supported by Motorola.



CONTACT GENESIS

+1 903-787-7400 – International
+1 877-548-0465 – Toll Free US & Canada
moreinfo@genesishworld.com
www.genesishworld.com



GenWatch3 is a registered trademark of GenCore Candeo, Ltd.
ASTRO 25 and MOTOTRBO are registered trademarks of Motorola Trademark Holdings, LLC