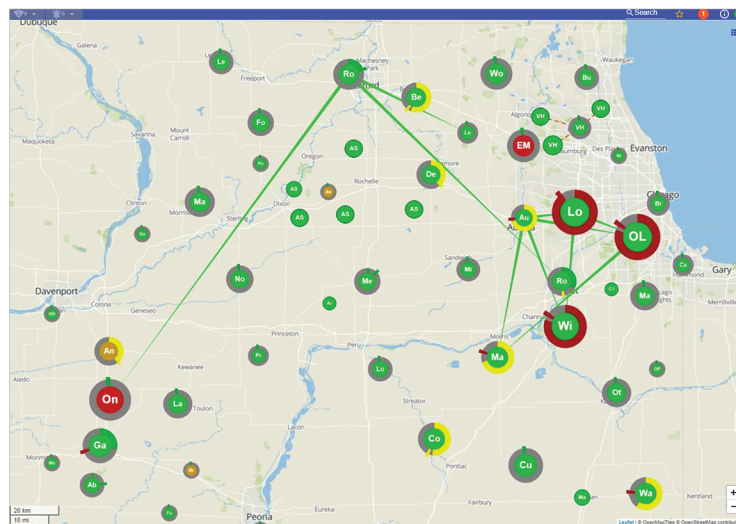


Performance Management for ASTRO® 25 Systems  
**SIMPLIFY REPORTING • VALIDATE DECISIONS • SAVE TIME**

GenWatch3® ATIA is an on-premise, browser-delivered software solution that monitors and manages radio traffic and system information collected from a Motorola ASTRO® 25 system. Radio System Managers can maintain constant visibility into how their system is performing, which helps them make more informed and data-driven decisions.

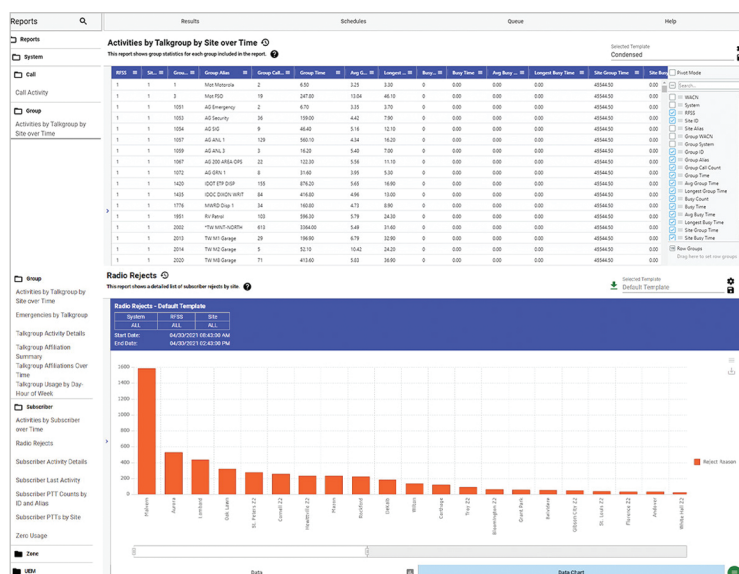
This information is available in a centralized location to be monitored, managed, and stored for as long as needed. Additionally, multiple live views enhance visibility and provide real-time insight into system performance. Radio System Managers can also run detailed reports from various angles and generate critical event notifications.



## SIMPLIFY REPORTING

The most powerful feature of GenWatch3 is the in-depth reporting capability. Data received on all ASTRO 25 system-wide activity is collected and archived for as long as needed without any loss of detail. Long-term archiving allows for more significant historical and in-depth forensic analysis of how the network is performing.

Radio System Managers can run reports across systems, zones, sites, channels, agencies, talkgroups, and subscribers based on their unique reporting needs. For recurring reports, GenWatch3 offers the ability to schedule and email reports..



# LET'S TALK

+1 903-787-7400 — *International*  
 +1 877-548-0465 — *Toll Free US & Canada*  
 sales@genesishworld.com  
**genesishworld.com**  
 Video Library: [genesishworld.com/ondemand](http://genesishworld.com/ondemand)

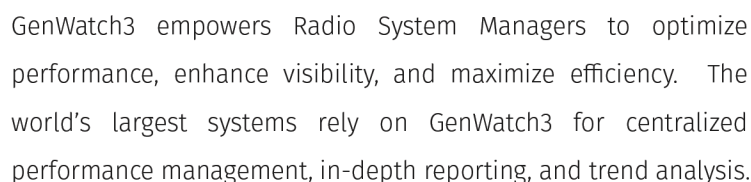




GenWatch3 monitors real-time radio system activity, including mobility, busies, site usage, and channel usage. Live views display system-wide information in various ways, such as map-based site performance indicators, channel activity display, all activity display, site drill-down, radio quick search, and more.

The screenshot shows the 'Channels' tab in the Active Directory Users and Groups console. The top bar indicates the user is logged in as 'active.demon\johndoe' and the console is running on 'Microsoft Windows 10.0.19042.1'. The 'Channels' tab is selected, and the 'Lombardi' group is chosen. The main area displays a grid of channel tiles, each representing a different channel type (e.g., F2MA on Teams, F2MA on Zoom, F2MA on Slack) with associated details like ID, name, and status. Below the grid, there are three charts: 'Group Name Cuts', 'Ratio Count', and 'Post Channels', each showing data over time.

Registrations/Affiliations									
Subscribers <span>10/25</span>									
Radio		Alias		Last Contact		Talkgroup		Access Type	
▼	▼	▼	▼	▼	▼	▼	▼	▼	▼
27144	88P-041	2025-01-01 00:00:00	2602	DP-ACDC2	TALKPH-041	2602	DP-88P-041 COURT	56	✓
100809	DP-CT-27144	2025-01-01 00:00:00	8007	DP-DC-62	UNKNOWN	100809	DP-88P-041 SOUTH	10	✓
27145	DP-88P-041	2025-01-01 00:00:00	2700	DP-DC-6022	TALKPH-041	2700	DP-88P-041 EAST	10	✓
27147	DP-88P-148	2025-01-01 00:00:00	8	UNKNOWN	UNKNOWN	27147	DP-88P-041 WEST	10	✓
273161	DP-88P-148	2025-01-01 00:00:00	2602	DP-88P-041 COURT	UNKNOWN	2602	DP-ACDC1	14	✓
274610	DP-88P-148	2025-01-01 00:00:00	2606	DP-88P-041 COURT	TALKPH-041	2606	DP-88P-041 SOUTH	10	✓
1819	DP-88P-148-0750-148	2025-01-01 00:00:00	8009	DP-88P-041 SOUTH	TALKPH-041	27162	DP-10-ACDC1	10	✓
273502	DP-88P-148	2025-01-01 00:00:00	27162	DP-88P-041 SOUTH	TALKPH-041	27162	DP-88P-041 SOUTH	10	✓
270617	DP-88P-148-0750-148	2025-01-01 00:00:00	27162	DP-88P-041 SOUTH	UNKNOWN	27162	DP-88P-041 SOUTH	10	✓
700448	AL-NO-700448	2025-01-01 00:00:00	32000	AL-NO-700448-828	TALKPH-041	26103	DP-100PH	17	✓



## YOU DESERVE TO GET THE MOST OUT OF YOUR ASTRO 25 SYSTEM INVESTMENT!

+1 903-787-7400 — *International*  
 +1 877-548-0465 — *Toll Free US & Canada*  
 sales@genesishworld.com  
**genesishworld.com**  
 Video Library: [genesishworld.com/ondemand](http://genesishworld.com/ondemand)

