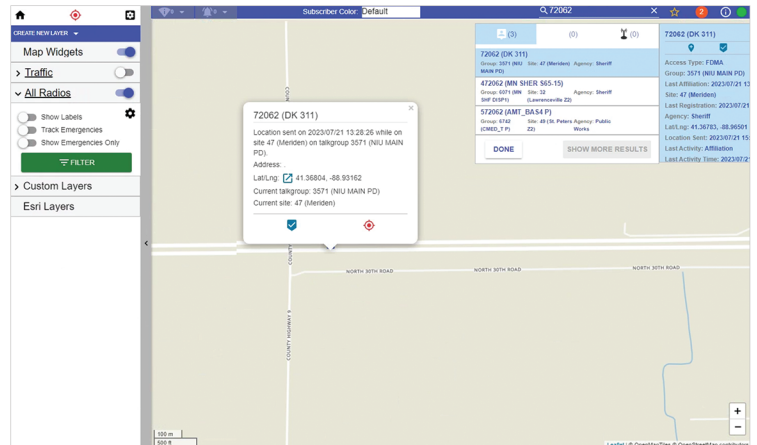


# GenWatch3 LOCATION SERVICES

Enriching GenWatch3® With Location Information  
**SIMPLIFY REPORTING • VALIDATE DECISIONS • SAVE TIME**

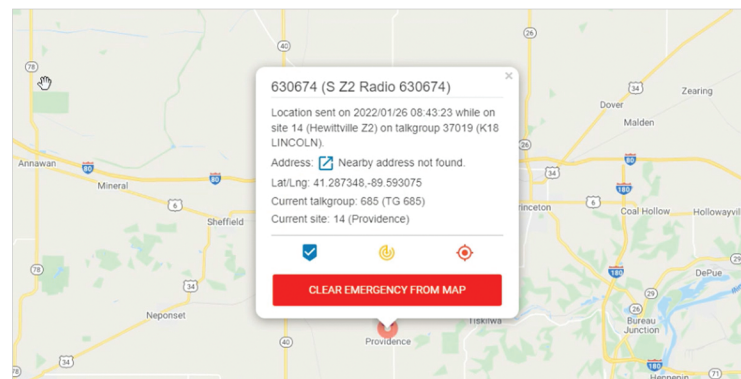
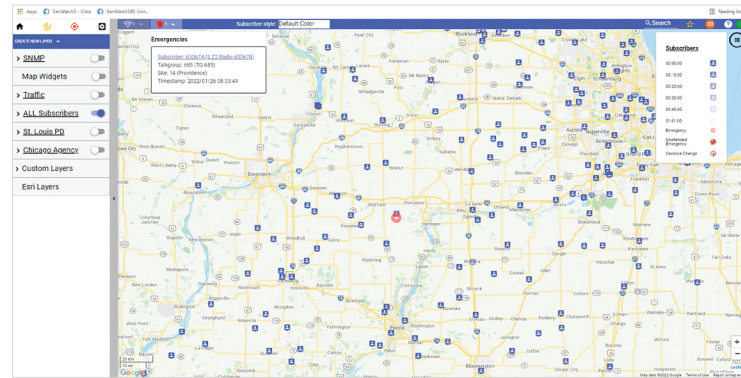
GenWatch3® Location Services is an enhancement to GenWatch3 ATIA and allows Radio System Managers to monitor the location of every GPS-capable and enabled radio on the Motorola ASTRO® 25 system via the Motorola IMW (Intelligent Middleware). Whether in an emergency or for general accountability, knowing the location of users operating on the system is essential.



## NEVER MISS AN EMERGENCY

While monitoring the location of hundreds (or thousands) of radios, it is important to never miss a user in distress. When a radio user has initiated an emergency, a flashing alarm is shown on the GenWatch3 map. Once the alert is acknowledged within GenWatch3, available details, including the radio's current location, last reported location, and site and talkgroup affiliations, are displayed.

For the duration of the active emergency, the map will continuously center over the unit until the emergency is cleared from the GenWatch3 map or a user-configurable timer expires. If multiple emergencies are in progress, the map will move and resize as needed so all emergencies remain centered on the screen.



## LET'S TALK

+1 903-787-7400 — International  
+1 877-548-0465 — Toll Free US & Canada  
sales@genesishworld.com  
**genesishworld.com**  
Video Library: [genesishworld.com/ondemand](https://genesishworld.com/ondemand)



ASTRO 25 is a registered trademark of Motorola Trademark Holdings, LLC  
GenWatch3 is a registered trademark of GenCore Candeco, Ltd.

# GenWatch3 LOCATION SERVICES

Enriching GenWatch3® With Location Information  
**SIMPLIFY REPORTING • VALIDATE DECISIONS • SAVE TIME**

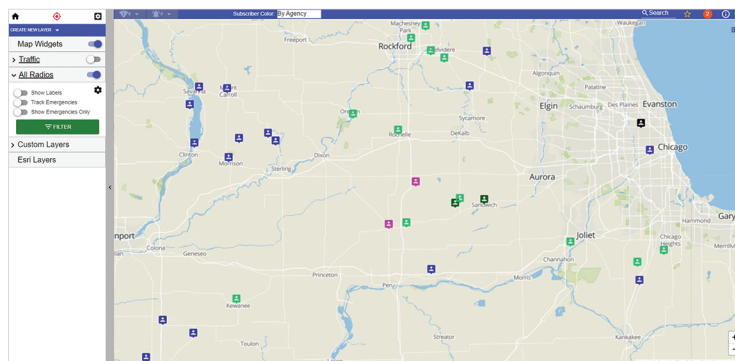
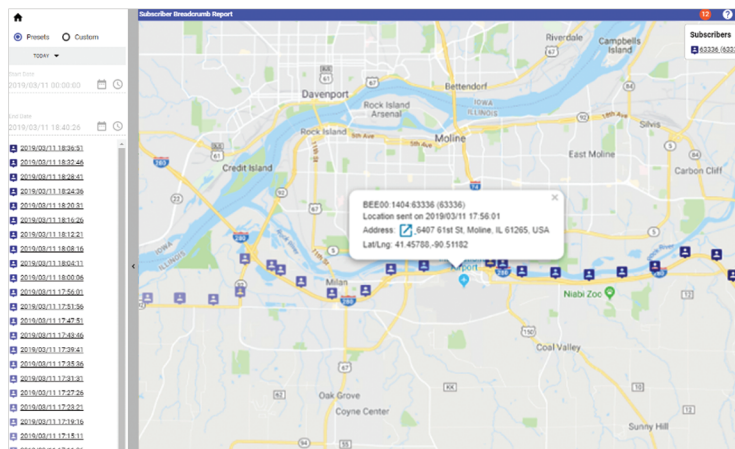
## FIND RADIOS QUICKLY

Radio System Managers often utilize the GenWatch3 Radio Quick Search feature to find the last known location of a lost or stolen radio. Radio System Managers can view the latest timestamp, radio information, and last reported location with a single click. In addition, users can display a Historic Breadcrumb Report to view a radio's location over a specified period.

## CONTROL VIEWING PRIVILEGES

The GenWatch3 Location Services Enhancement allows Radio System Managers to provide restricted radio location views to member agencies. These filtered views ensure that each agency only sees the locations of their respective radios.

For agencies who would prefer their radio locations not be monitored, Radio System Managers can create a blacklist within GenWatch3. This ensures blacklisted radio locations are only visible when an emergency is initiated from that radio.



**YOU DESERVE TO GET THE MOST  
OUT OF YOUR ASTRO 25 SYSTEM  
INVESTMENT!**

## LET'S TALK

+1 903-787-7400 — International  
+1 877-548-0465 — Toll Free US & Canada  
sales@genesishworld.com  
**genesishworld.com**  
Video Library: [genesishworld.com/ondemand](https://genesishworld.com/ondemand)



ASTRO 25 is a registered trademark of Motorola Trademark Holdings, LLC  
GenWatch3 is a registered trademark of GenCore Candeco, Ltd.